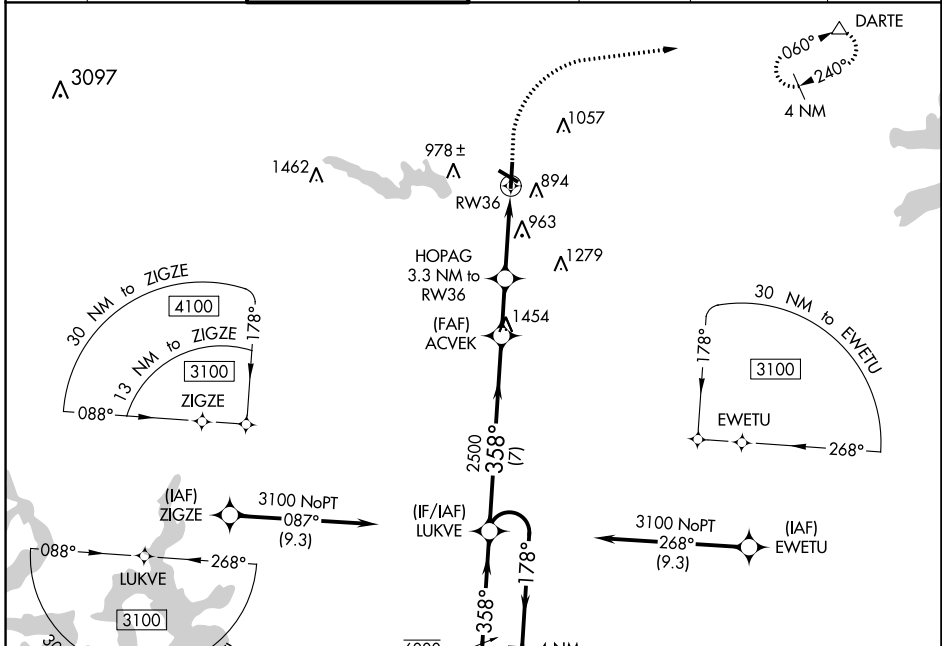


WAAS CH 72738 W36A	APP CRS 358°	Rwy Idg TDZE Apt Elev	5004 765 790
--	------------------------	-----------------------------	---

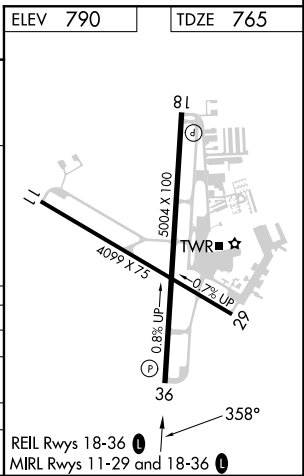
RNAV (GPS) RWY 36

GEORGETOWN EXEC (GTU)

RNP APCH.		<p>▼ Circling Rwy 29 NA at night. Rwy 36 helicopter visibility reduction below 3/4 SM NA.</p> <p>▲ For uncompensated Baro-VNAV systems, LNAV/VNAV NA below -16°C or above 54°C.</p>		MISSED APPROACH: Climb to 1300 then climbing right turn to 3000 direct DARTE and hold.		
ATIS 118.6	AUSTIN APP CON 119.0 370.85	GEORGETOWN TOWER * 120.225 (CTAF) 0	GND CON 119.125	CLNC DEL 119.125	CLNC DEL 121.1 (when twr closed)	UNICOM 123.0



4 NM Holding Pattern		1300	3000	DARTE
LUKVE		*LNAV only.		
6000	← 178°	ACVEK 2500	HOPAG 3.3 NM to RW36	→ 358°
3100	← 358°	2500	*1.3 NM to RW36	→ 358°
GP 3.00° TCH 50		2500	*1840	→ 358°
← 178°		2.1 NM	2 NM	1.3 NM
← 7 NM				
CATEGORY	A	B	C	D
LPV DA	1015-1		250 (300-1)	
LNAV/VNAV DA	1242-1½		477 (500-1½)	
LNAV MDA	1220-1	455 (500-1)	1220-1½	455 (500-1½)
◻ CIRCLING	1240-1 450 (500-1)	1340-1 550 (600-1)	1360-1½ 570 (600-1½)	1640-2¾ 850 (900-2¾)



SC-3, 31 OCT 2024 to 28 NOV 2024

SC-3, 31 OCT 2024 to 28 NOV 2024