

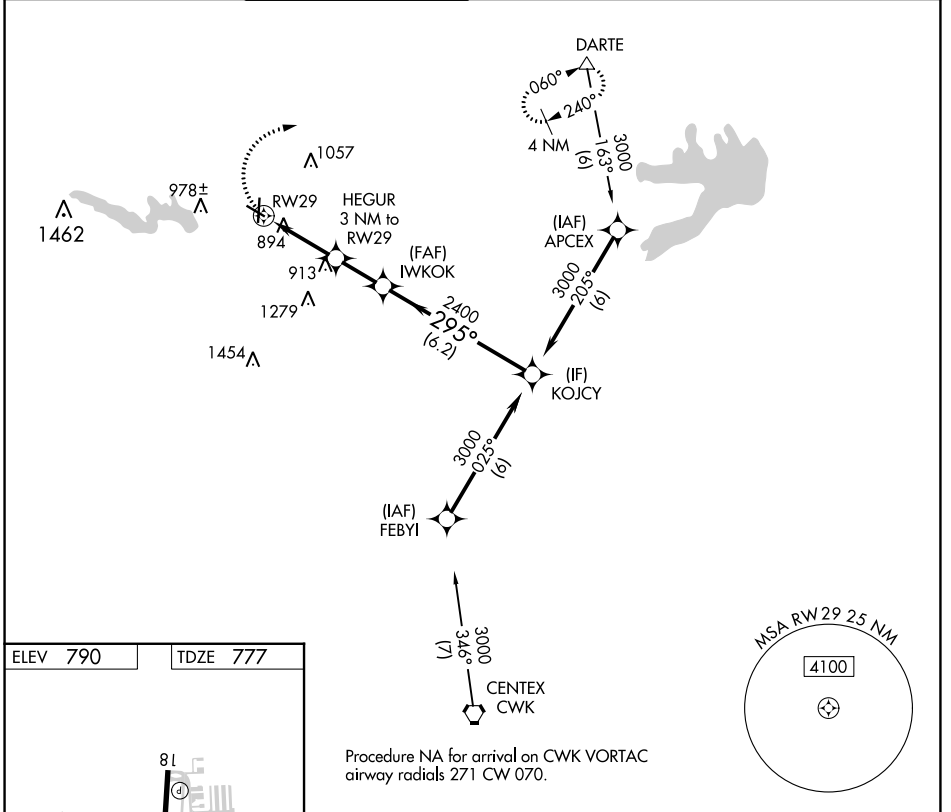
APP CRS	Rwy Idg	<b>4099</b>
<b>295°</b>	TDZE	<b>777</b>
	Apt Elev	<b>790</b>

# RNAV (GPS) RWY 29

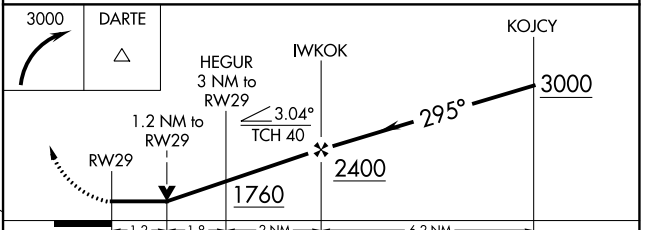
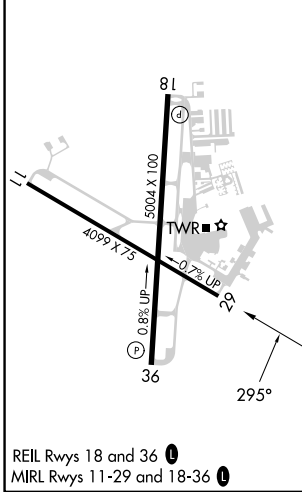
GEORGETOWN EXEC (GTU)

RNP APCH.  
 ▼ Rwy 29 helicopter visibility reduction below 3/4 SM NA. VDP NA when using Skylark Field altimeter setting. When local altimeter setting not received, use Skylark Field altimeter setting and increase all MDA 80 feet increase LNAV and Circling Cat C/D visibility 1/4 SM.  
 MISSED APPROACH: Climbing right turn to 3000 direct DARTE and hold.

ATIS	AUSTIN APP CON	GEORGETOWN TOWER *	GND CON	CLNC DEL	CLNC DEL	UNICOM
<b>118.6</b>	<b>119.0 370.85</b>	<b>120.225 (CTAF) 0</b>	<b>119.125</b>	<b>119.125</b>	<b>121.1</b> (when twr closed)	<b>123.0</b>



ELEV 790	TDZE 777
----------	----------



CATEGORY	A	B	C	D
LNAV MDA	1220-1	443 (500-1)	1220-1 3/8	443 (500-1 3/8)
<b>CIRCLING</b>	1240-1 450 (500-1)	1340-1 550 (600-1)	1360-1 1/2 570 (600-1 1/2)	1640-2 3/4 850 (900-2 3/4)

SC-3, 08 AUG 2024 to 05 SEP 2024

SC-3, 08 AUG 2024 to 05 SEP 2024