

TROY, ALABAMA

AL-5720 (FAA)

24137

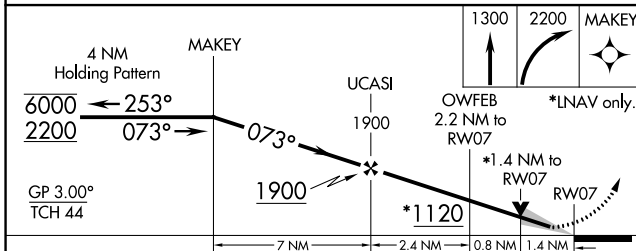
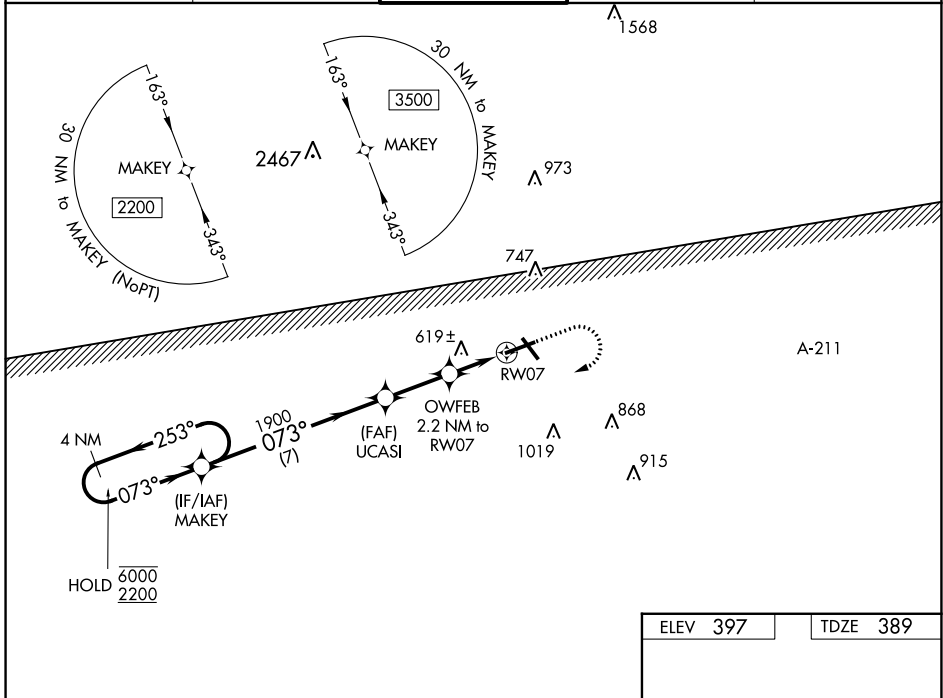
WAAS CH <b>82006</b> <b>W07A</b>	APP CRS <b>073°</b>	Rwy Idg TDZE Apt Elev	<b>6197</b> <b>389</b> <b>397</b>
----------------------------------------	------------------------	-----------------------------	-----------------------------------------

# RNAV (GPS) RWY 7

TROY MUNI AT N KENNETH CAMPBELL FLD (TOI)

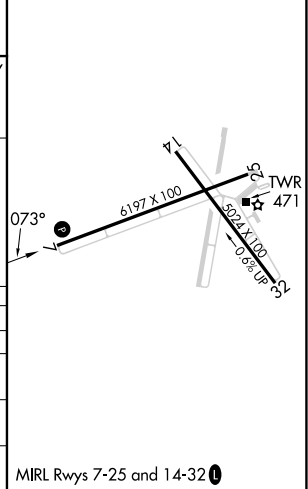
RNP APCH.		MISSED APPROACH: Climb to 1300 then climbing right turn to 2200 direct MAKEY and hold.		
<p>⚠ Circling Rwy 14, 32 NA at night. For uncompensated Baro-VNAV systems, LNAV/VNAV NA below -7°C or above 54°C.</p>				

ATIS <b>120.925</b>	CAIRNS APP CON★ <b>121.1 319.25</b>	TROY TOWER★ <b>124.3 (CTAF) 0 306.9</b>	GND CON <b>121.9 294.7</b>	UNICOM <b>122.8</b>
------------------------	----------------------------------------	--------------------------------------------	-------------------------------	------------------------



ELEV 397	TDZE 389
----------	----------

CATEGORY	A	B	C	D
LPV DA		637-7/8	248 (300-7/8)	
LNAV/VNAV DA		702-1 1/8	313 (400-1 1/8)	
LNAV MDA	880-1	491 (500-1)	880-1 3/8	491 (500-1 3/8)
CIRCLING	1000-1	603 (700-1)	1300-2 3/4 903 (1000-2 3/4)	1380-3 983 (1000-3)



MIRL Rwy 7-25 and 14-32

TROY, ALABAMA  
Amdt 3A 21MAY20

TROY MUNI AT N KENNETH CAMPBELL FLD (TOI)  
31°52'N-86°01'W

# RNAV (GPS) RWY 7

SE-4, 03 OCT 2024 to 31 OCT 2024

SE-4, 03 OCT 2024 to 31 OCT 2024