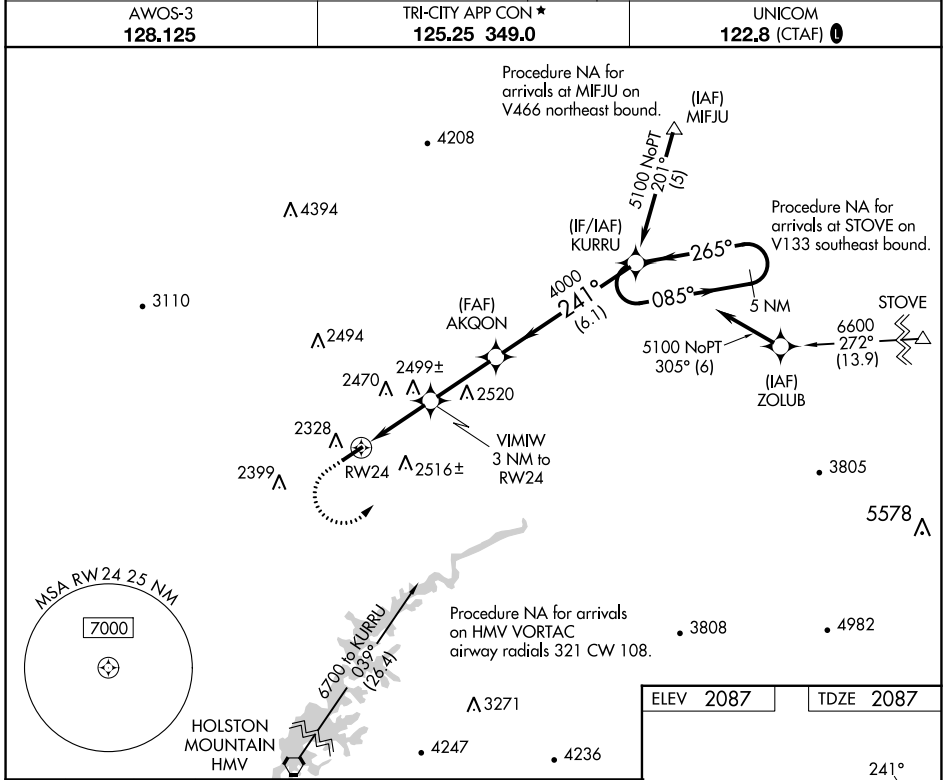


WAAS CH <b>77827</b> <b>W24A</b>	APP CRS <b>241°</b>	Rwy Idg TDZE Apt Elev	<b>4471</b> <b>2087</b> <b>2087</b>
--	------------------------	-----------------------------	---

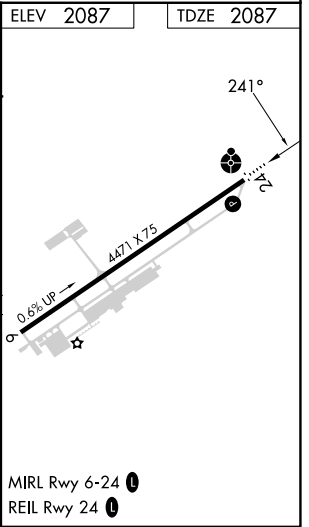
# RNAV (GPS) RWY 24

VIRGINIA HIGHLANDS (VJI)

<p>For uncompensated Baro-VNAV systems, LNAV/VNAV NA below -19°C (-2°F) or above 53°C (127°F). DME/DME RNP-0.3 NA. Inop table does not apply to LPV.</p>	ODALS 	MISSED APPROACH: Climb to 2900 then climbing left turn to 5100 direct KURRU and hold.
	<p>AWOS-3 <b>128.125</b></p> <p>TRI-CITY APP CON ★ <b>125.25 349.0</b></p> <p>UNICOM <b>122.8 (CTAF) 0</b></p>	



2900	5100	KURRU	VGSI and RNAV glidepath not coincident (VGSI Angle 4.00/TCH 32).	5 NM Holding Pattern
<p>* LNAV only.</p> <p>* 1.2 NM to RW24</p> <p>* 1.8 NM to RW24</p>		VIMIW 3 NM to RW24	AKQON 4000	085° → 5100
<p>→ 1.2 → 1.8 NM → 2.8 NM → 6.1 NM →</p>		3100*	4000	241° ← 265°



CATEGORY	A	B	C	D
LPV DA		2337-1	250 (300-1)	
LNAV/VNAV DA		2525-1¼	438 (500-1¼)	
LNAV MDA	2760-1	673 (700-1)	2760-1¾	673 (700-1¾)
CIRCLING	2860-1	773 (800-1)	2860-2¼	3080-3
			773 (800-2¼)	993 (1000-3)

NE-3, 03 OCT 2024 to 31 OCT 2024

NE-3, 03 OCT 2024 to 31 OCT 2024