

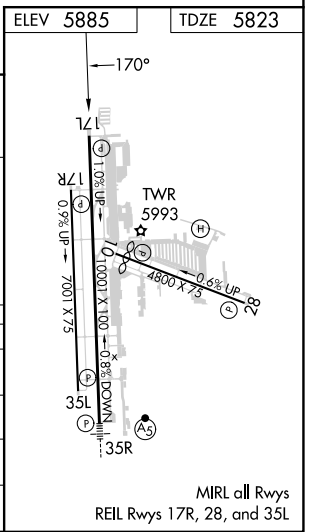
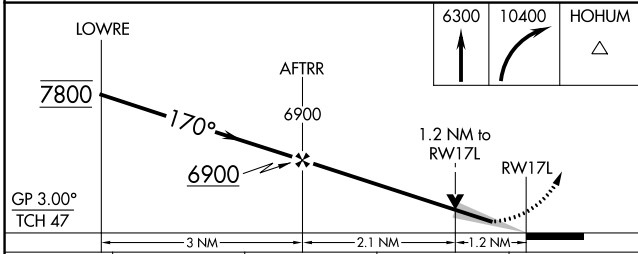
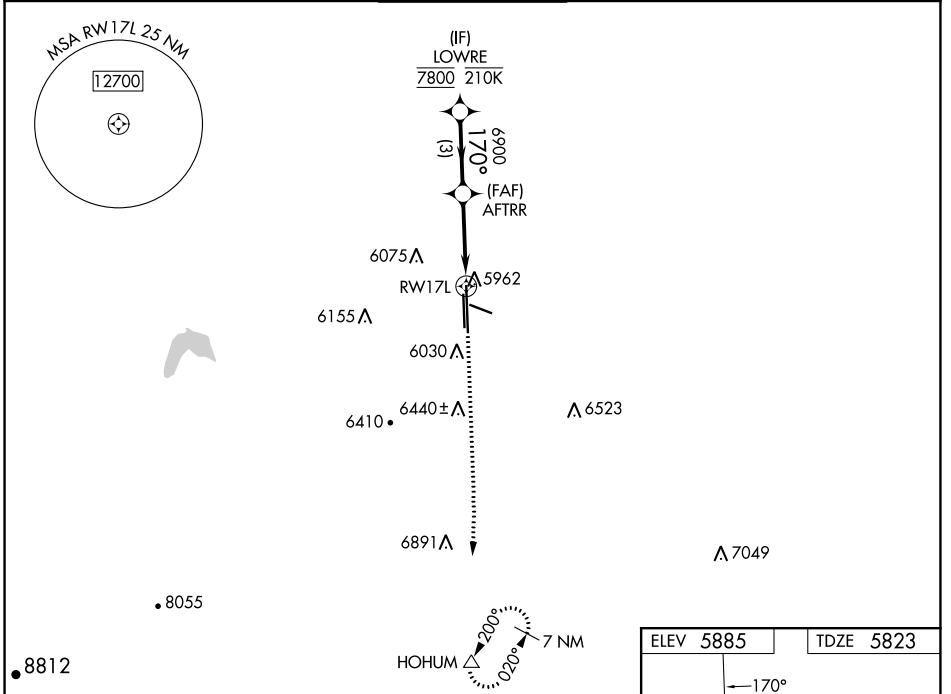
WAAS CH <b>72930</b> <b>W17A</b>	APP CRS <b>170°</b>	Rwy Idg TDZE Apt Elev	<b>10001</b> <b>5823</b> <b>5885</b>
--	------------------------	-----------------------------	--

# RNAV (GPS) RWY 17L

CENTENNIAL (APA)

RNP APCH - GPS.	MISSED APPROACH: Climb to 6300 then climbing right turn to 10400 direct HOHUM and hold, continue climb-in-hold to 10400.
<p><b>⚠</b> Circling Rwy 35L NA at night. For uncompensated Baro-VNAV systems, LNAV/VNAV NA below -20°C or above 54°C.</p>	

ATIS <b>120.3</b>	DENVER APP CON <b>132.75 269.3</b>	<b>CENTENNIAL TOWER</b> <b>118.9</b>	GND CON <b>121.8</b>	CLNC DEL <b>128.6</b>
----------------------	---------------------------------------	---	-------------------------	--------------------------



CATEGORY	A	B	C	D
LPV DA		6023-3/4	200 (200-3/4)	
LNAV/VNAV DA		6123-7/8	300 (300-7/8)	
LNAV MDA	6220-1	397 (400-1)	6220-1 1/8	397 (400-1 1/8)
<b>CIRCLING</b>	6400-1 515 (600-1)	6480-1 595 (600-1)	6740-2 1/2 855 (900-2 1/2)	6900-3 1015 (1100-3)

SW-1, 31 OCT 2024 to 28 NOV 2024

SW-1, 31 OCT 2024 to 28 NOV 2024