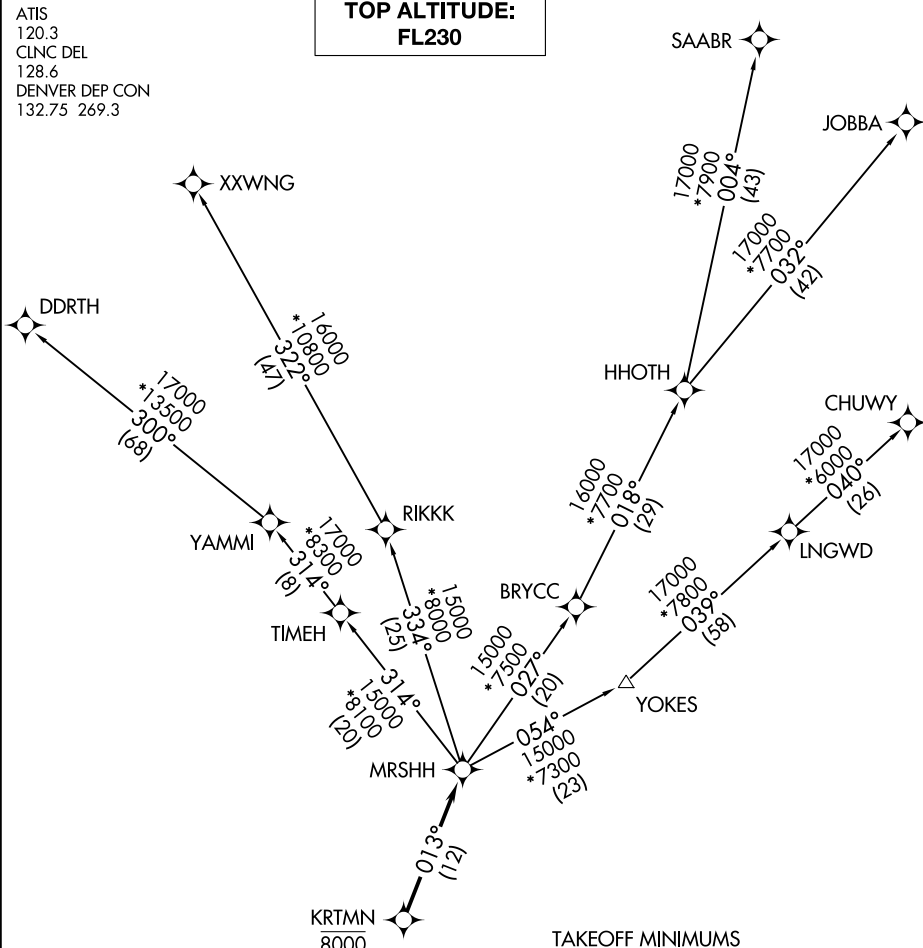


ATIS
120.3
CLNC DEL
128.6
DENVER DEP CON
132.75 269.3

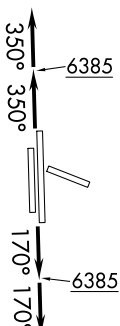
**TOP ALTITUDE:
FL230**



TAKEOFF MINIMUMS

Rwys 10, 28: NA.
 Rwy 17L: Standard with minimum climb of 257' per NM to 8000.
 Rwy 17R: Standard with minimum climb of 372' per NM to 8000.
 Rwys 35L/R: Standard.

NOTE: DME/DME/IRU or GPS required.
 NOTE: RNAV 1.
 NOTE: Turbojets only.
 NOTE: RADAR required.



NOTE: Chart not to scale.

(NARRATIVE ON FOLLOWING PAGE)

SW-1, 31 OCT 2024 to 28 NOV 2024

SW-1, 31 OCT 2024 to 28 NOV 2024