

WAAS CH 45828 W15A	APP CRS 150°	Rwy Idg TDZE 1419 Apt Elev 1419
--	------------------------	---

RNAV (GPS) RWY 15

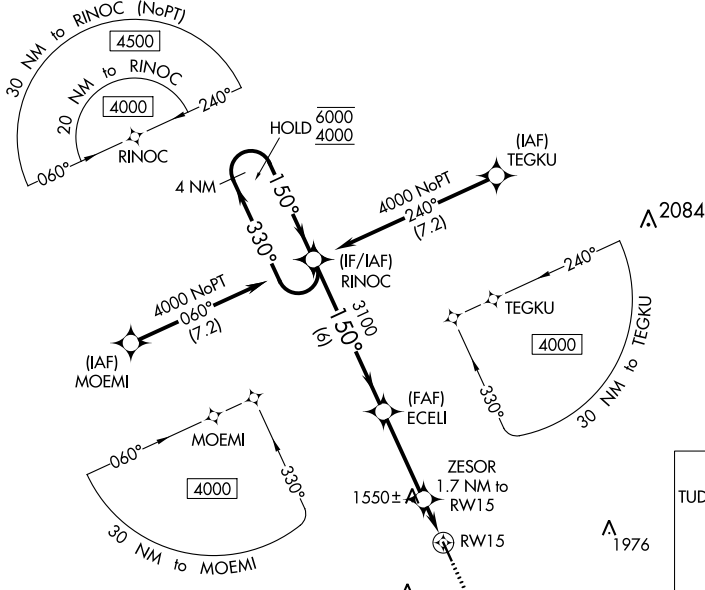
SHELDON RGNL (SHL)

RNP APCH-GPS.

⚠ Rwy 15 helicopter visibility reduction below 3/4 SM NA. For uncompensated Baro-VNAV systems, LNAV/VNAV NA below 17°C or above 54°C.

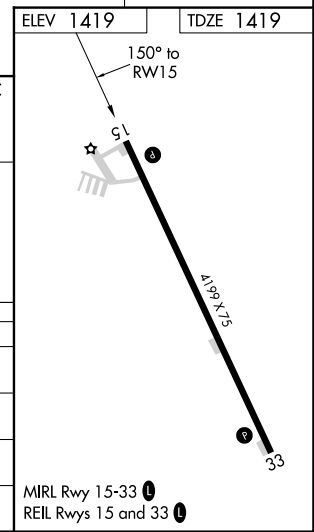
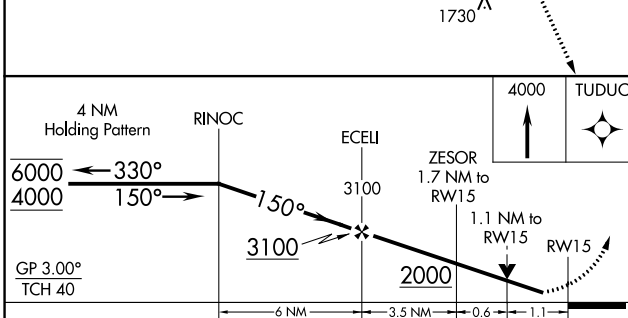
MISSED APPROACH: Climb to 4000 direct TUDUC and hold, continue climb-in-hold to 4000.

AWOS-3 119.775	MINNEAPOLIS CENTER 125.025 235.625	UNICOM 122.8 (CTAF) ①
--------------------------	--	---------------------------------



NC-3, 31 OCT 2024 to 28 NOV 2024

NC-3, 31 OCT 2024 to 28 NOV 2024



CATEGORY	A	B	C	D
LPV DA		1669-1 250 (300-1)		NA
LNAV/VNAV DA		1765-1 346 (400-1)		NA
LNAV MDA	1800-1	381 (400-1)	1800-1 381 (400-1 3/8)	NA
CIRCLING	1820-1 401 (500-1)	1920-1 501 (600-1)	2080-1 3/4 661 (700-1 3/4)	NA