

WAAS CH <b>45641</b> <b>W03A</b>	APP CRS <b>033°</b>	Rwy Idg <b>4703</b> TDZE <b>19</b> Apt Elev <b>19</b>
--	------------------------	---

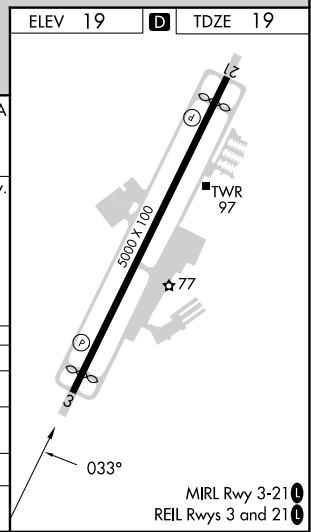
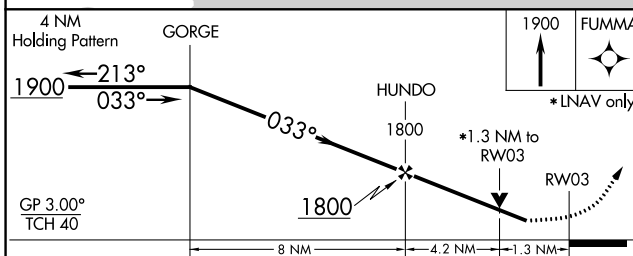
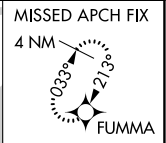
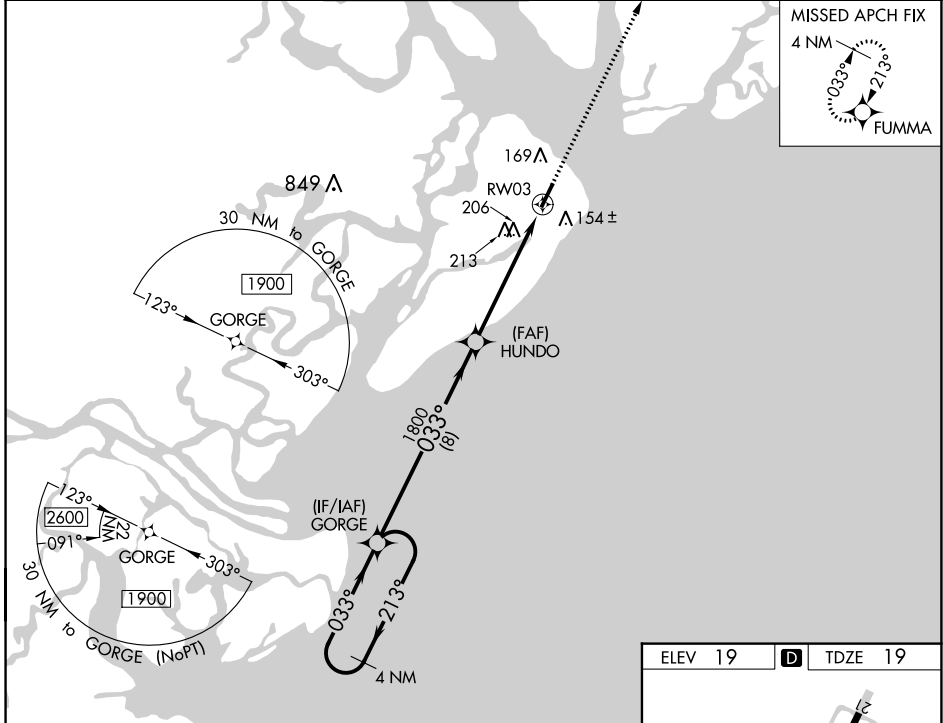
# RNAV (GPS) RWY 3

HILTON HEAD (HXD)

**⚠** For uncompensated Baro-VNAV systems, LNAV/VNAV NA below -15°C (5°F) or above 54°C (130°F). Rwy 3 helicopter visibility reduction below ¼ SM NA. DME/DME RNP-0.3 NA.

**⚠** MISSED APPROACH: Climb to 1900 direct FUMMA and hold.

ATIS <b>121.4</b>	SAVANNAH APP CON ★ <b>125.3 371.875</b>	HILTON HEAD TOWER ★ <b>118.975 (CTAF) 0</b>	GND CON <b>121.1</b>	CLNC DEL <b>121.1</b>	CLNC DEL <b>123.85</b> (When twr closed)
----------------------	--	--	-------------------------	--------------------------	--



CATEGORY	A	B	C	D
LPV DA		321-1	302 (400-1)	
LNAV/VNAV DA		334-1	315 (400-1)	
LNAV MDA	480-1	461 (500-1)	480-1½	461 (500-1½)
<b>C</b> CIRCLING	480-1 461 (500-1)	520-1 501 (600-1)	520-1½ 501 (600-1½)	580-2 561 (600-2)

MIRL Rwy 3-21  
REIL Rwy 3 and 21

SE-2, 31 OCT 2024 to 28 NOV 2024

SE-2, 31 OCT 2024 to 28 NOV 2024