

WAAS CH 53604 W36A	APP CRS 360°	Rwy Idg 5550 TDZE 326 Apt Elev 333
--	------------------------	---

RNAV (GPS) RWY 36

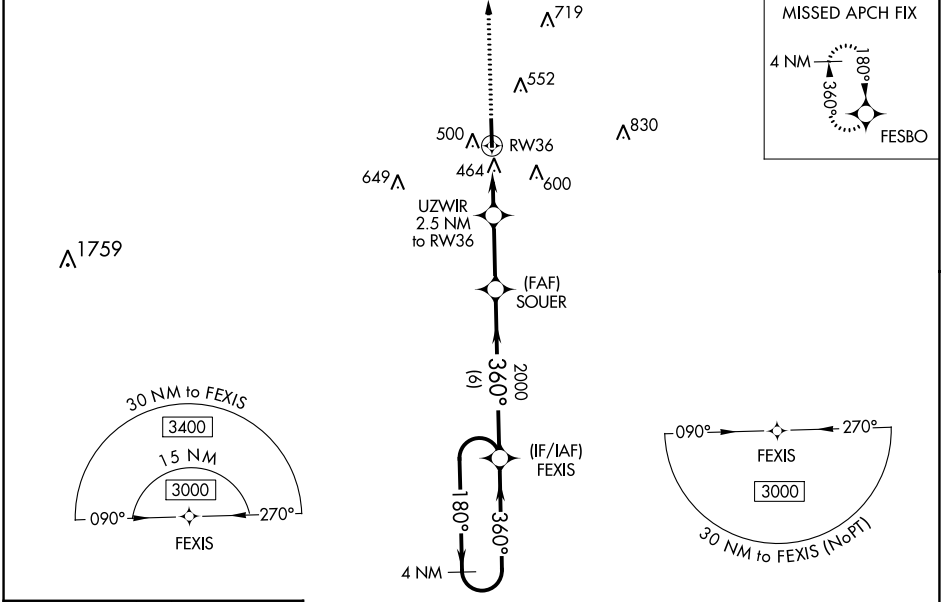
GEORGE M BRYAN (STF)

RNP APCH-GPS.

⚠ For uncompensated Baro-VNAV systems, LNAV/VNAV NA below -15°C or above 54°C .
⚠ When local altimeter setting not received, use Golden Triangle Rgnl altimeter setting and increase LPV DA to 566 feet; increase LNAV/VNAV DA to 690 feet; increase all MDAs 40 feet and LNAV visibility Cat C/D 1/8 SM, and Circling visibility Cat C 1/4 SM. Baro-VNAV and VDP NA when using Golden Triangle Rgnl altimeter setting.

MISSED APPROACH: Climb to 3400 direct FESBO and hold, continue climb-in-hold to 3400.

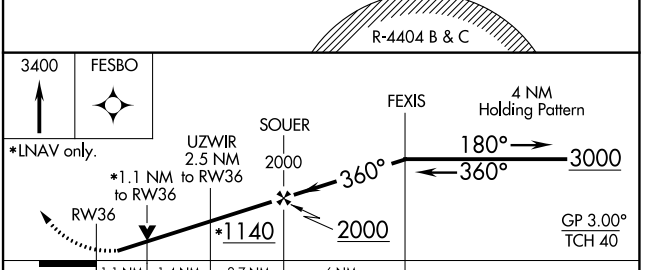
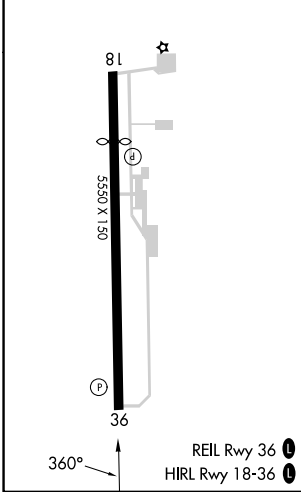
AWOS-3PT 118.975	COLUMBUS APP CON* 135.6 323.275	CLNC DEL 126.25	UNICOM 122.7 (CTAF)
----------------------------	---	---------------------------	-------------------------------



SC-4, 31 OCT 2024 to 28 NOV 2024

SC-4, 31 OCT 2024 to 28 NOV 2024

ELEV 333	TDZE 326
-----------------	-----------------



3400	FESBO				
*LNAV only.		UZWIR 2.5 NM to RW36	SOUER 2000	FEXIS 4 NM Holding Pattern	
		1.1 NM	1.4 NM	2.7 NM	6 NM
RW36					
					GP 3.00° TCH 40
CATEGORY	A	B	C	D	
LPV DA		526-3/4	200 (200-3/4)		
LNAV/VNAV DA		650-1	324 (400-1)		
LNAV MDA	720-1	394 (400-1)	720-1 1/8	394 (400-1/8)	
<input checked="" type="checkbox"/> CIRCLING	920-1	587 (600-1)	920-1 1/2	1020-2 1/4 687 (700-2 1/4)	