

| | | | |
|--|------------------------|-----------------------------|---|
| WAAS CH 50419 W18A | APP CRS 180° | Rwy Idg TDZE Apt Elev | 4171 333 333 |
|--|------------------------|-----------------------------|---|

RNAV (GPS) RWY 18

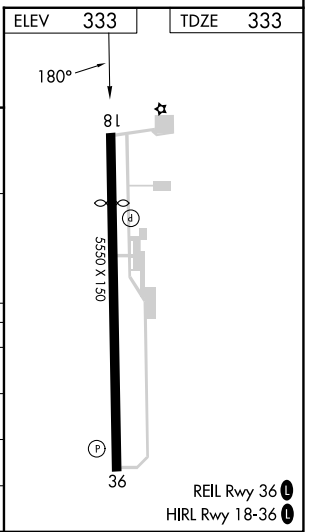
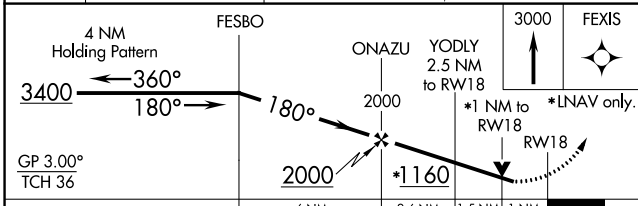
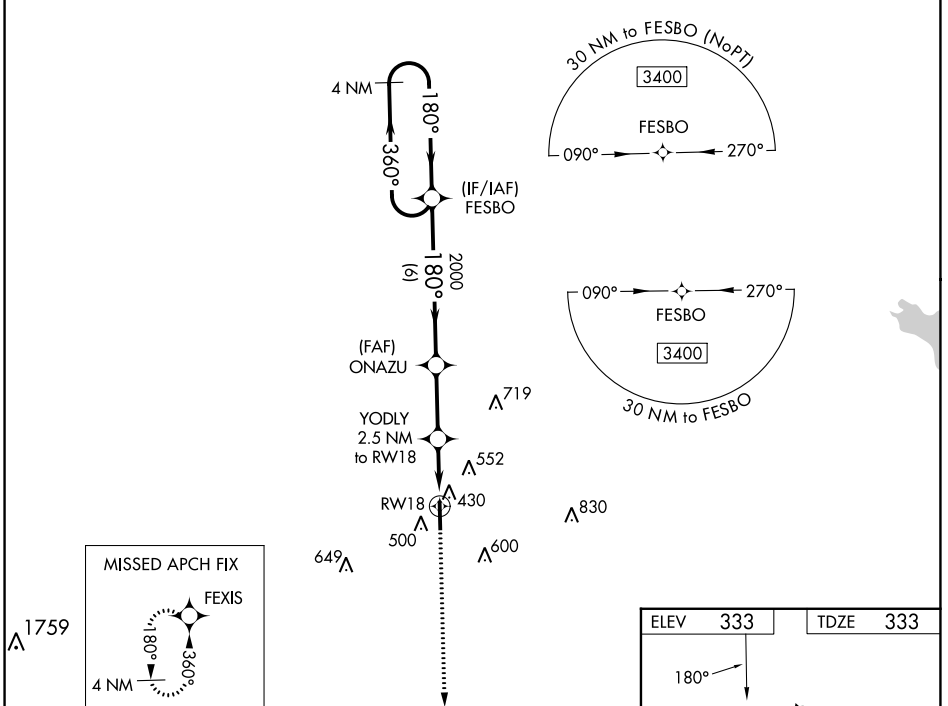
GEORGE M BRYAN (STP)

RNP APCH-GPS.

▼
▲ For uncompensated Baro-VNAV systems, LNAV/VNAV NA below -15°C or above 54°C. Baro-VNAV and VDP NA when using Golden Triangle Rgnl altimeter setting. Rwy 18 helicopter visibility reduction below ¾ SM NA. When local altimeter setting not received, use Golden Triangle Rgnl altimeter setting and increase LPV DA to 673 feet, increase LNAV/VNAV DA to 656 feet and visibilities all Cats ½ SM. Increase all MDAs 40 feet and LNAV visibility Cat C/D ½ SM, and Circling visibility Cat C ¼ SM.

MISSED APPROACH: Climb to 3000 direct FEXIS and hold.

| | | | |
|----------------------------|--|---------------------------|---------------------------------|
| AWOS-3PT 118.975 | COLUMBUS APP CON * 135.6 323.275 | CINC DEL 126.25 | UNICOM 122.7 (CTAF) 0 |
|----------------------------|--|---------------------------|---------------------------------|



| CATEGORY | A | B | C | D |
|--------------|-------|-------------|------------------------|-------------------------|
| LPV DA | | 633-1 | 300 (300-1) | |
| LNAV/VNAV DA | | 616-1 | 283 (300-1) | |
| LNAV MDA | | 680-1 | 347 (400-1) | |
| CIRCLING | 920-1 | 587 (600-1) | 920-1½ 587 (600-1½) | 1020-2¼ 687 (700-2¼) |

SC-4, 08 AUG 2024 to 05 SEP 2024

SC-4, 08 AUG 2024 to 05 SEP 2024