

VORTAC SPI 112.7 Chan 74	APP CRS 041°	Rwy Idg 4000 TDZE 593 Apt Elev 594
----------------------------------------------	------------------------	---------------------------------------------------------------

VOR RWY 3

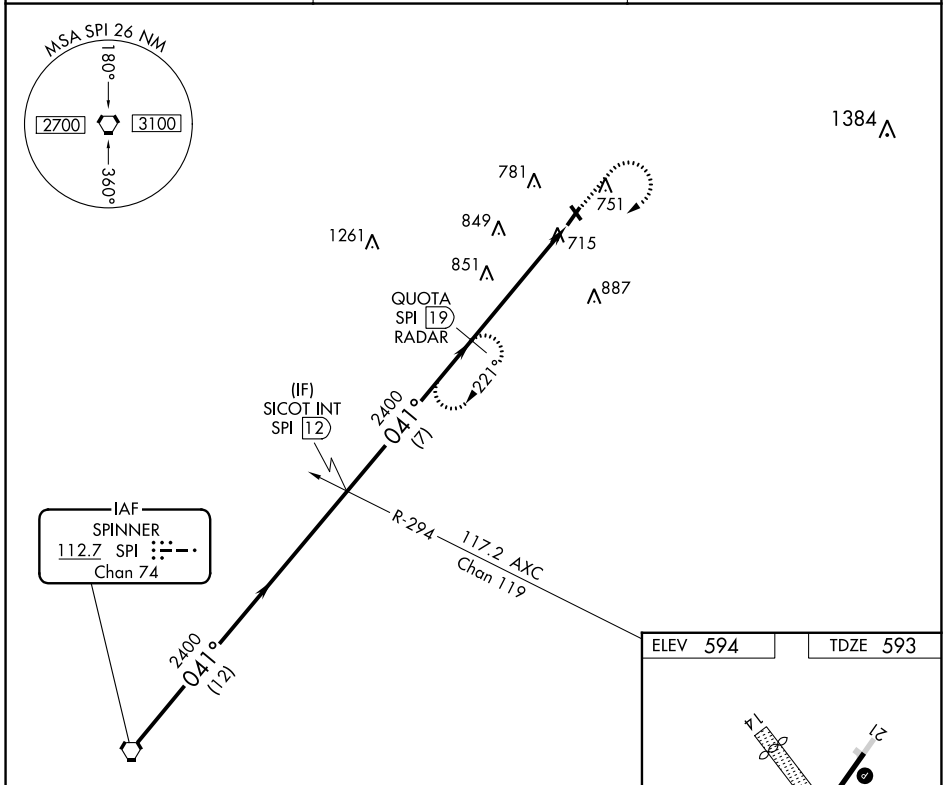
LOGAN COUNTY (AAA)

DME or RADAR required.

⚠ When local altimeter setting not received, use Springfield, IL altimeter setting and increase all MDAs 60 feet, increase Circling Cat C/D visibility ¼ SM. Circling NA to Rwy 14 and 32. Rwy 3 helicopter visibility reduction below ¾ SM NA.

MISSED APPROACH: Climb to 2000 then climbing right turn to 2400 via SPI R-041 to QUOTA/19 DME/RADAR and hold.

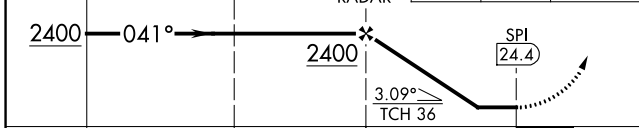
AWOS-3 118.775	SAINT LOUIS APP CON ★ 126.15 323.0	UNICOM 122.8 (CTAF) 0
--------------------------	----------------------------------------------	---------------------------------



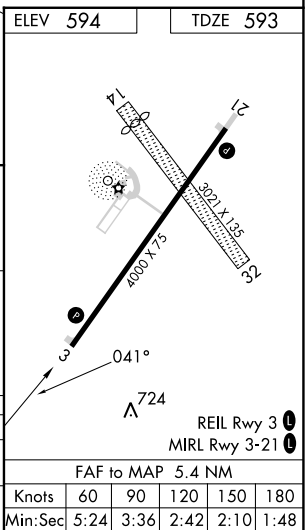
EC-3, 31 OCT 2024 to 28 NOV 2024

EC-3, 31 OCT 2024 to 28 NOV 2024

Procedure Turn NA	VGSI and descent angles not coincident (VGSI Angle 3.50/TCH 26).	2000	2400	QUOTA SPI 19
SPI VORTAC	SICOT INT SPI 12	QUOTA SPI 19 RADAR	SPI R-041	QUOTA SPI 19



CATEGORY	A	B	C	D
S-3	1120-1 527 (600-1)	1120-1¼ 527 (600-1¼)	1120-1½ 527 (600-1½)	1120-1¾ 527 (600-1¾)
CIRCLING	1140-1 546 (600-1)	1140-1¼ 546 (600-1¼)	1280-2 686 (700-2)	1280-2¼ 686 (700-2¼)



FAF to MAP 5.4 NM					
Knots	60	90	120	150	180
Min:Sec	5:24	3:36	2:42	2:10	1:48