

WAAS CH <b>40431</b> <b>W18A</b>	APP CRS <b>181°</b>	Rwy Idg TDZE Apt Elev	<b>4306</b> <b>1737</b> <b>1737</b>
--	------------------------	-----------------------------	---

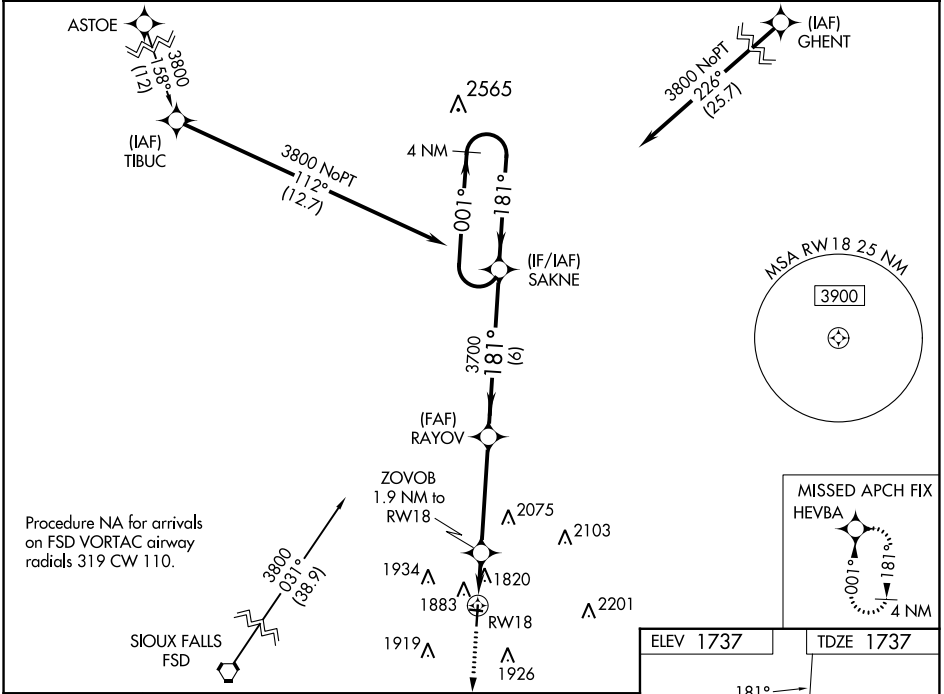
# RNAV (GPS) RWY 18

PIPESTONE MUNI (PQN)

**⚠** For uncompensated Baro-VNAV systems, LNAV/VNAV NA below -18°C (0°F) or above 54°C (130°F).  
**⚠** DME/DME RNP -0.3 NA. When local altimeter setting not received, use Slayton altimeter setting and increase all DA 68 feet and all MDA 80 feet; increase LPV all Cats, LNAV/VNAV all Cats, and Circling Cat C visibility ¼ mile; increase LNAV Cat C visibility ⅓ mile. Helicopter visibility reduction below ¾ SM NA. Baro-VNAV and VDP NA with Slayton altimeter setting. Circling NA to Rwy's 9 and 27.

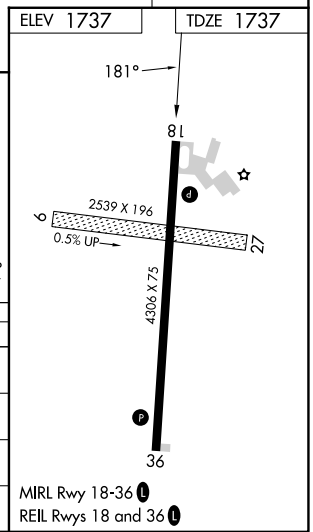
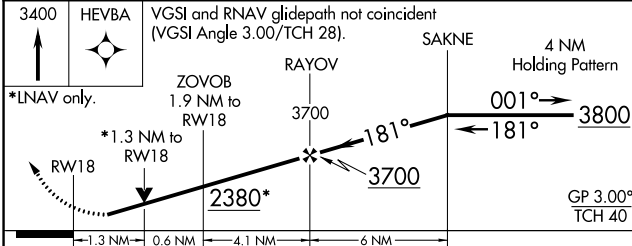
**MISSED APPROACH:**  
Climb to 3400 direct HEVBA and hold.

AWOS-3PT <b>118.375</b>	MINNEAPOLIS CENTER <b>132.05 317.4</b>	GCO <b>121.725</b>	UNICOM <b>122.8 (CTAF) 0</b>
----------------------------	---	-----------------------	---------------------------------



NC-1, 08 AUG 2024 to 05 SEP 2024

NC-1, 08 AUG 2024 to 05 SEP 2024



CATEGORY	A	B	C	D
LPV DA	1987-1	250 (300-1)		NA
LNAV/VNAV DA	2034-1	297 (300-1)		NA
LNAV MDA	2180-1	443 (500-1)	2180-1⅓ 443 (500-1⅓)	NA
CIRCLING	2200-1 463 (500-1)	2280-1 543 (600-1)	2280-1½ 543 (600-1½)	NA

MIRL Rwy 18-36 0  
REIL Rwy's 18 and 36 0