

| | | |
|--|------------------------|---|
| WAAS CH 69319 W36A | APP CRS 360° | Rwy Idg 7004 TDZE 120 Apt Elev 126 |
|--|------------------------|---|

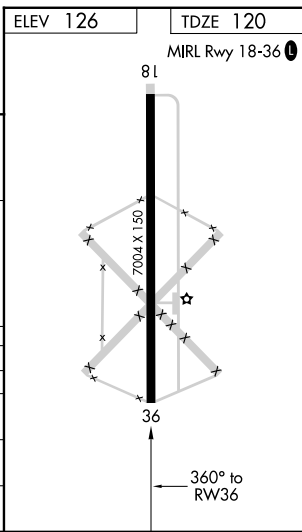
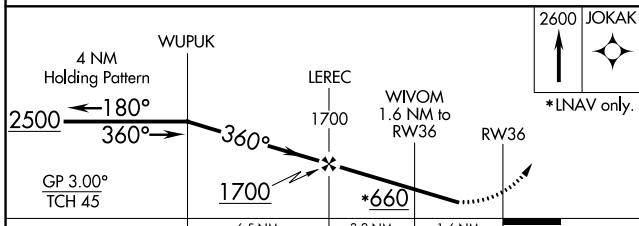
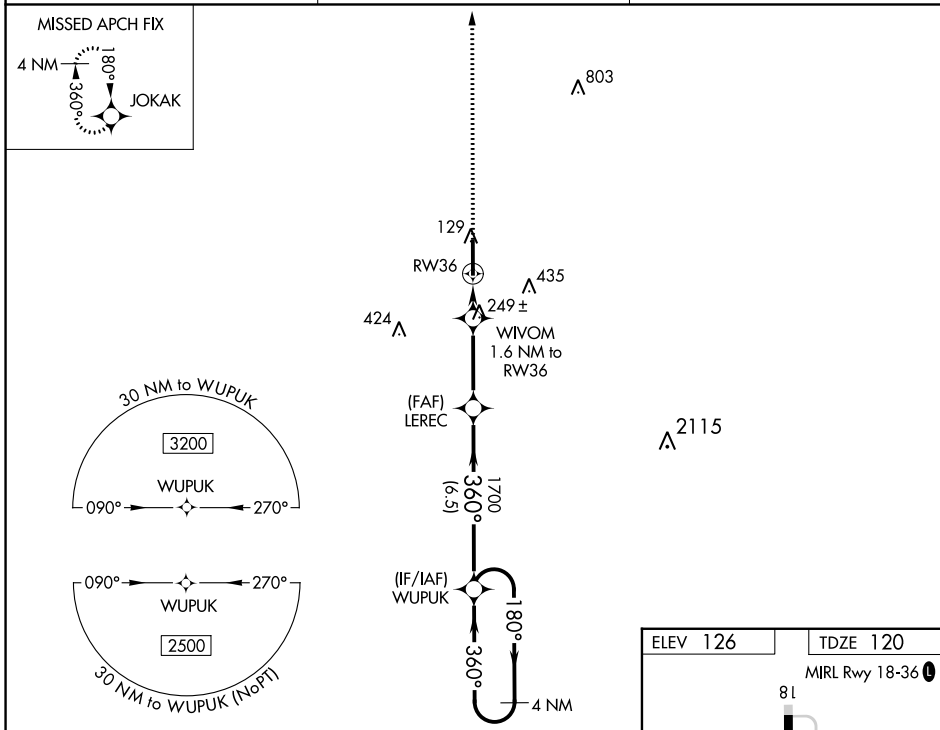
RNAV (GPS) RWY 36

INDIANOLA MUNI (IDL)

▼ **NA** Night landing: Rwy 18 NA. Baro-VNAV NA. DME/DME RNP-0.3 NA. Helicopter visibility reduction below 3/4 SM NA. Use Greenville altimeter setting, when not received, use Greenwood altimeter setting and increase LPV DA to 507 and all Cats visibility 1/8 SM, increase LNAV/VNAV DA to 465 and all Cats visibility 1/8 SM, increase all MDA 40 feet, increase LNAV Cat C/D and Circling Cat C/D visibility 1/4 SM.

MISSED APPROACH: Climb to 2600 direct JOKAK and hold.

| | | |
|----------------------------|---|---------------------------------|
| GLH ASOS 125.525 | MEMPHIS CENTER 135.875 269.35 | UNICOM 122.8 (CTAF) 0 |
|----------------------------|---|---------------------------------|



| CATEGORY | A | B | C | D |
|--------------|----------------------|----------------------|----------------------|------------------------------|
| LPV DA | 470-1 1/8 | | 350 (400-1 1/8) | |
| LNAV/VNAV DA | 428-1 | | 308 (400-1) | |
| LNAV MDA | 540-1 | 420 (500-1) | 540-1 1/8 | 420 (500-1 1/8) |
| CIRCLING | 580-1 454 (500-1) | 600-1 474 (500-1) | 840-2 714 (800-2) | 840-2 1/4 714 (800-2 1/4) |

SC-4, 03 OCT 2024 to 31 OCT 2024

SC-4, 03 OCT 2024 to 31 OCT 2024