

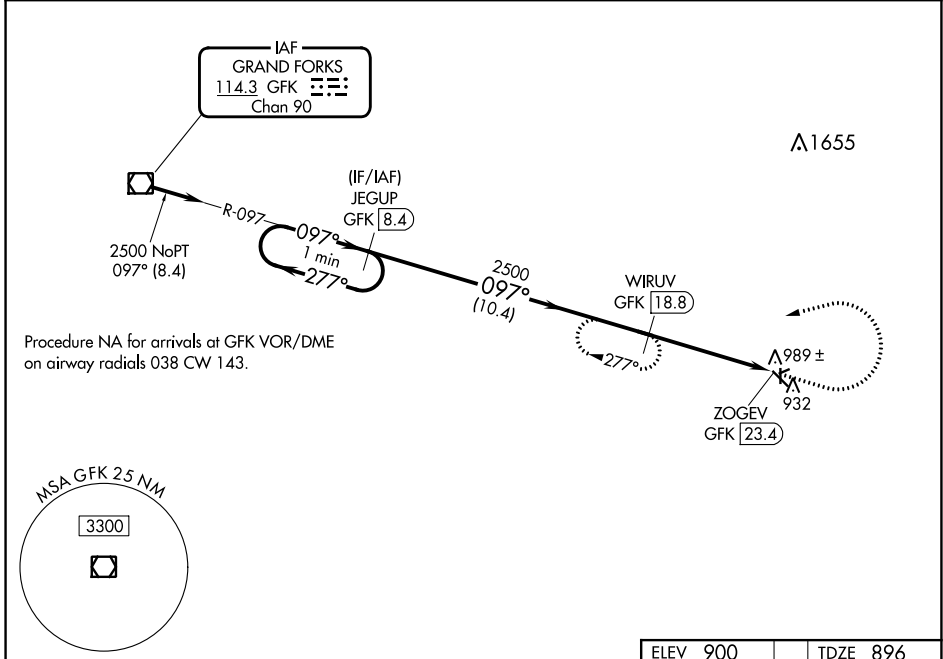
| | | | |
|---|------------------------|-----------------------------|---|
| VOR/DME GFK 114.3 Chan 90 | APP CRS 097° | Rwy Idg TDZE Apt Elev | 4300 896 900 |
|---|------------------------|-----------------------------|---|

VOR/DME RWY 13
CROOKSTON MUNI/KIRKWOOD FLD (CKN)

⚠ When local altimeter setting not received, use Grand Forks Intl altimeter setting. Circling Rws 6, 24, 17, 35 NA at night.

MISSED APPROACH: Climb to 2000 then climbing left turn to 2500 heading 250° and GFK VOR/DME R-097 to WIRUV/GFK 18.8 DME and hold.

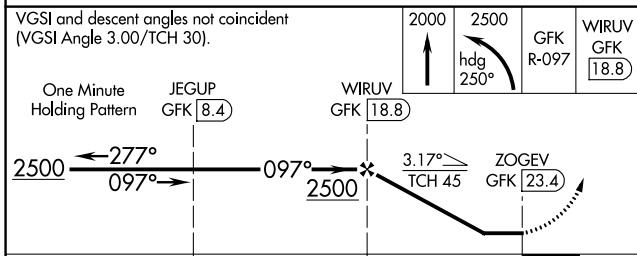
| | | |
|--------------------------|--|---------------------------------|
| AWOS-3 126.425 | GRAND FORKS APP CON* 118.1 318.1 | UNICOM 122.7 (CTAF) 0 |
|--------------------------|--|---------------------------------|



Procedure NA for arrivals at GFK VOR/DME on airway radials 038 CW 143.

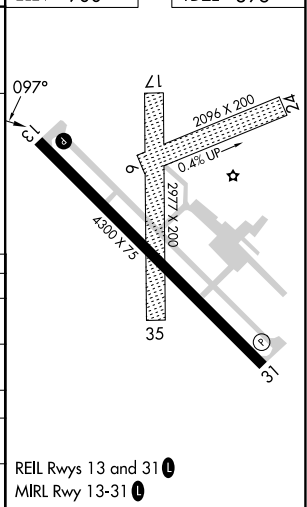
NC-1, 08 AUG 2024 to 05 SEP 2024

NC-1, 08 AUG 2024 to 05 SEP 2024



| | |
|----------|----------|
| ELEV 900 | TDZE 896 |
|----------|----------|

| CATEGORY | A | B | C | D |
|-------------------------------------|--------|-------------|--|----|
| S-13 | 1400-1 | 504 (500-1) | 1400-1 ³ / ₈ 504 (500-1 ³ / ₈) | NA |
| CIRCLING | 1400-1 | 500 (500-1) | 1480-1 ¹ / ₂ 580 (600-1 ¹ / ₂) | NA |
| GRAND FORKS INTL ALTIMETER MINIMUMS | | | | |
| S-13 | 1480-1 | 584 (600-1) | 1480-1 ³ / ₄ 584 (600-1 ³ / ₄) | NA |
| CIRCLING | 1480-1 | 580 (600-1) | 1560-1 ³ / ₄ 660 (700-1 ³ / ₄) | NA |



REIL Rws 13 and 31 0
MIRL Rwy 13-31 0