

WAAS CH <b>69304</b> <b>W31A</b>	APP CRS <b>308°</b>	Rwy Idg TDZE Apt Elev	<b>4300</b> <b>897</b> <b>900</b>
--	------------------------	-----------------------------	---

# RNAV (GPS) RWY 31

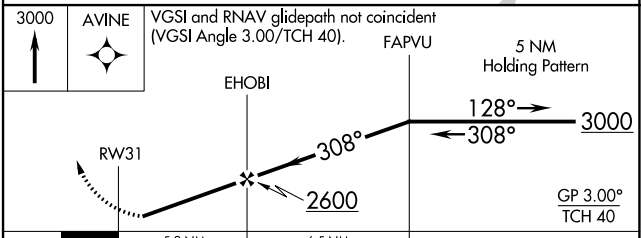
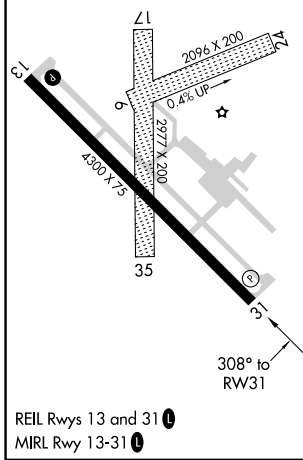
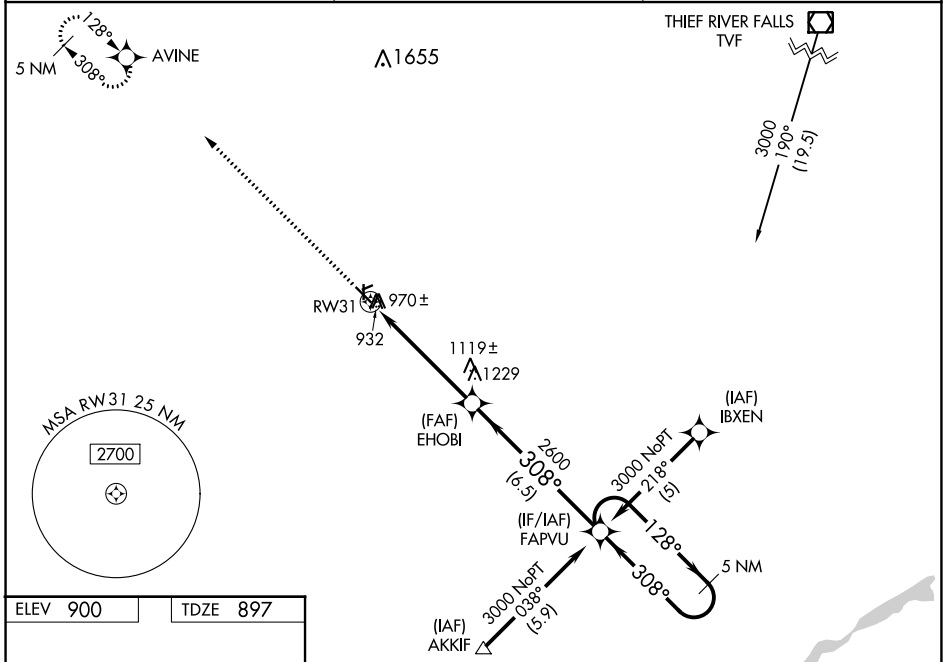
CROOKSTON MUNI/KIRKWOOD FLD (CKN)

RNP APCH.

Baro-VNAV NA when using Grand Forks altimeter setting. For uncompensated Baro-VNAV systems, LNAV/VNAV NA below -16°C (4°F) or above 54°C (130°F). When local altimeter setting not received, use Grand Forks altimeter setting and increase LPV DA to 1219 feet and LNAV/VNAV DA to 1382 feet, increase all MDAs 80 feet and Circling Cat C visibility ¼ SM. Visibility reduction by helicopters NA. Circling Rws 6, 24, 17, 35 NA at night.

MISSED APPROACH: Climb to 3000 direct AVINE and hold.

AWOS-3 <b>126.425</b>	GRAND FORKS APP CON* <b>118.1 318.1</b>	UNICOM <b>122.7 (CTAF)</b>
--------------------------	--	-------------------------------



CATEGORY	A	B	C	D
LPV DA	1157-1 260 (300-1)			NA
LNAV/VNAV DA	1320-1½ 423 (500-1½)			NA
LNAV MDA	1380-1	483 (500-1)	1380-1¼ 483 (500-1¼)	NA
CIRCLING	1380-1	480 (500-1)	1480-1½ 580 (600-1½)	NA

NC-1, 08 AUG 2024 to 05 SEP 2024

NC-1, 08 AUG 2024 to 05 SEP 2024