

DESTIN, FLORIDA

AL-5680 (FAA)

24137

WAAS CH <b>56623</b> <b>W32A</b>	APP CRS <b>323°</b>	Rwy Idg <b>5001</b> TDZE <b>20</b> Apt Elev <b>22</b>
--	------------------------	---

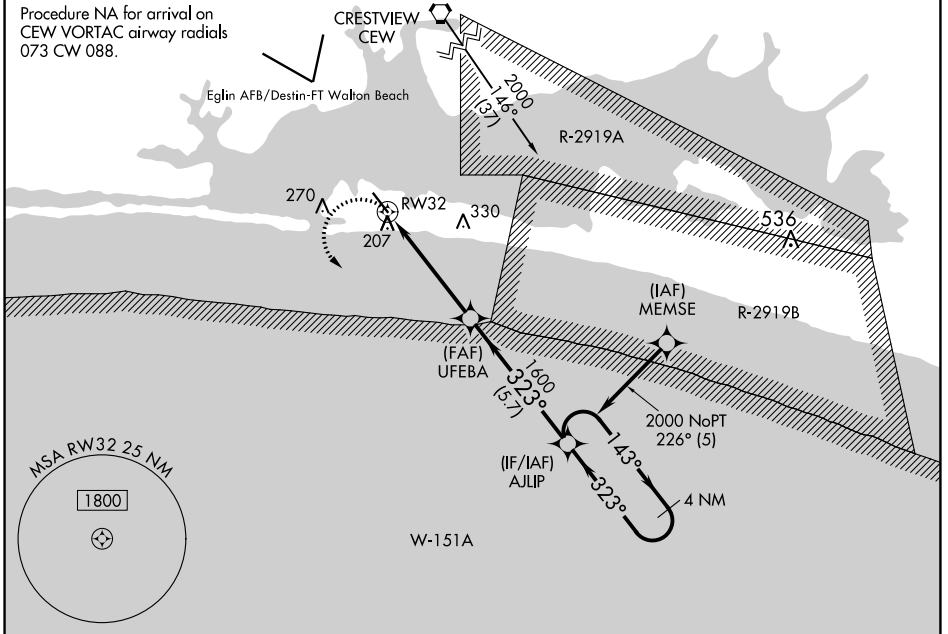
# RNAV (GPS) RWY 32

DESTIN EXEC (DTS)

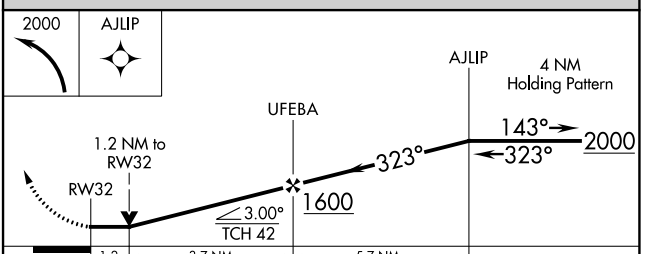
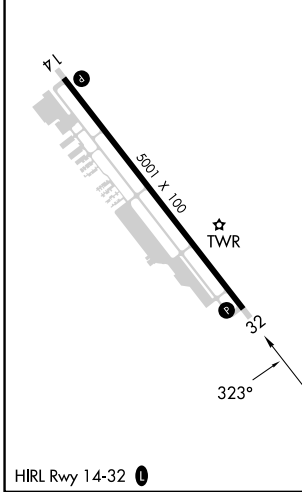
**▼** Rwy 32 helicopter visibility reduction below 3/4 SM NA. DME/DME RNP-0.3 NA. VDP NA when using Crestview altimeter setting. When local altimeter setting not received, use Crestview altimeter setting and increase all MDA 80 feet; increase LP Cats C and D visibility 1/4 SM, increase LNAV Cats C and D visibility 3/8 SM, and increase Circling Cat C visibility 1/4 SM.

**MISSED APPROACH:**  
Climbing left turn to 2000 direct AJLIP and hold.

ATIS <b>133.925</b>	EGLIN APP CON <b>132.1 360.6</b>	DESTIN TOWER ★ <b>118.45 (CTAF) 0</b>	GND CON <b>121.6</b>	CLNC DEL <b>121.6</b>	CLNC DEL <b>127.7 377.2</b> (When twr closed)	UNICOM <b>123.075</b>
------------------------	-------------------------------------	--	-------------------------	--------------------------	---	--------------------------



ELEV <b>22</b>	TDZE <b>20</b>
----------------	----------------



CATEGORY	A	B	C	D
LP MDA	440-1	420 (500-1)	440-1 1/8	420 (500-1 1/8)
LNAV MDA	540-1	520 (600-1)	540-1 3/8	520 (600-1 3/8)
<b>C</b> CIRCLING	580-1	558 (600-1)	680-1 3/4 658 (700-1 3/4)	680-2 658 (700-2)

DESTIN, FLORIDA  
Amdt 1C 07DEC17

30°24'N-86°28'W

# DESTIN EXEC (DTS) RNAV (GPS) RWY 32

SE-3, 05 SEP 2024 to 03 OCT 2024

SE-3, 05 SEP 2024 to 03 OCT 2024