

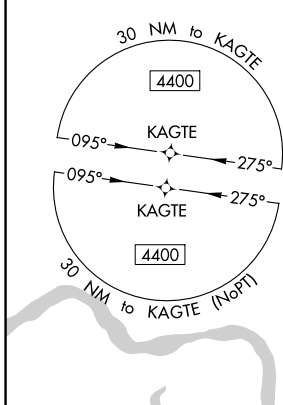
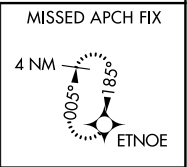
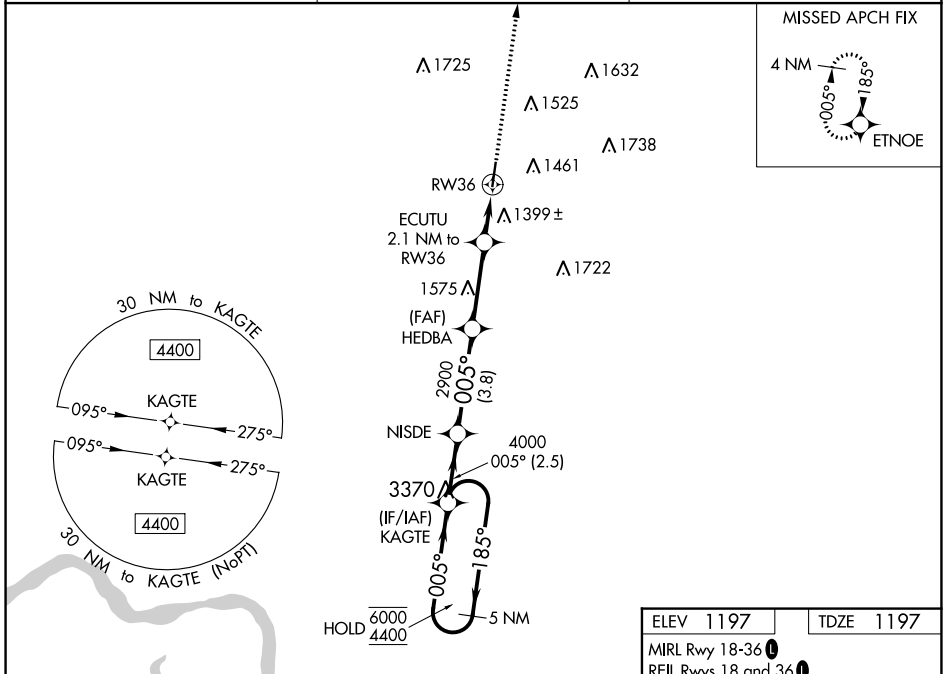
WAAS CH 42516 W36A	APP CRS 005°	Rwy Idg TDZE Apt Elev	4756 1197 1197
--	------------------------	-----------------------------	---

RNAV (GPS) RWY 36

LE MARS MUNI (L.R.J)

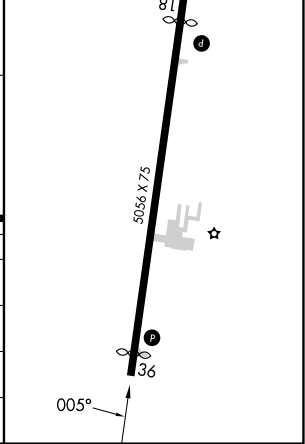
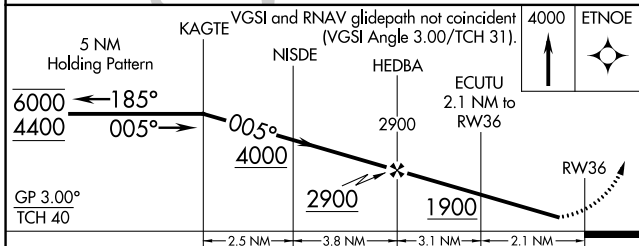
RNP APCH - GPS.	MISSED APPROACH: Climb to 4000 direct ETNOE and hold.
Rwy 36 helicopter visibility reduction below 1 SM NA. For uncompensated Baro-VNAV systems, LNAV/VNAV NA below -24°C -24°C	

AWOS-3P 120.975	SIOUX CITY APP CON * 124.6 307.0	UNICOM 122.8 (CTAF) 0
---------------------------	--	---------------------------------



ELEV 1197	TDZE 1197
-----------	-----------

MIRL Rwy 18-36
REIL Rwy 18 and 36



CATEGORY	A	B	C	D
LPV DA	1469-1 272 (300-1)			NA
LNAV/VNAV DA	1723-1 5/8 526 (600-1 5/8)			NA
LNAV MDA	1660-1 463 (500-1)		1660-1 3/8 463 (500-1 3/8)	NA
CIRCLING	1760-1 563 (600-1)	1780-1 583 (600-1)	1840-1 3/4 643 (700-1 3/4)	NA

NC-3, 31 OCT 2024 to 28 NOV 2024

NC-3, 31 OCT 2024 to 28 NOV 2024