

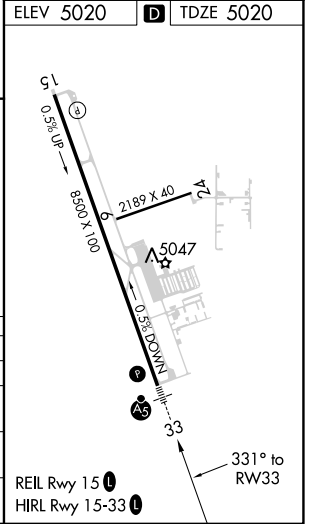
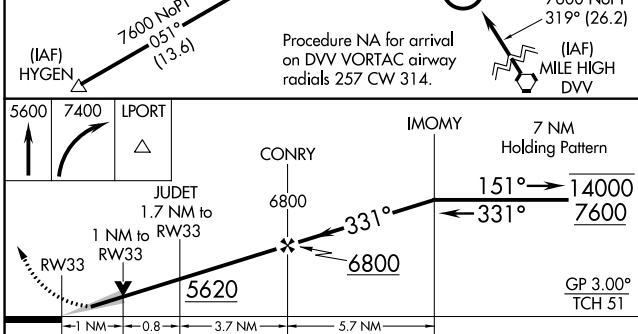
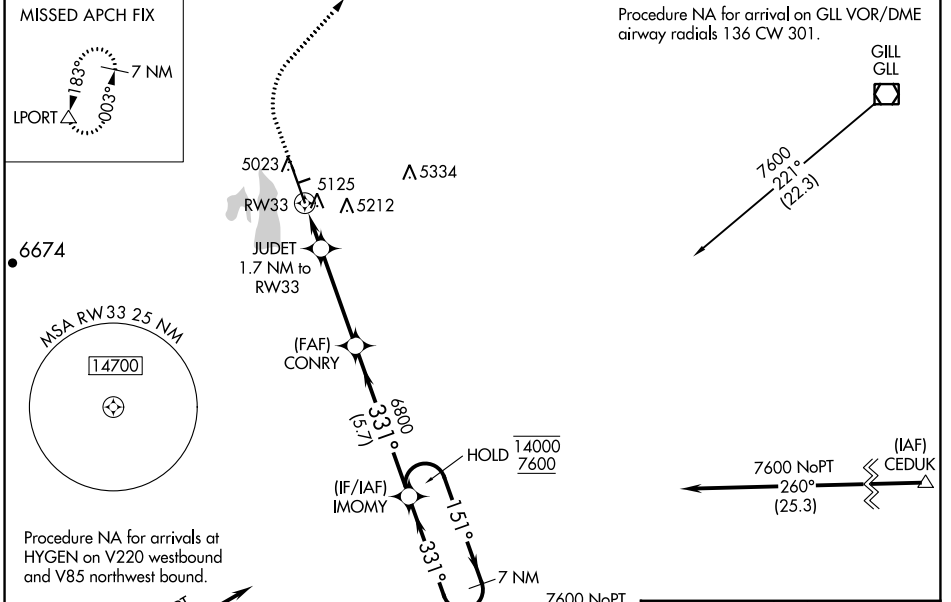
WAAS CH 97511 W33A	APP CRS 331°	Rwy Idg TDZE Apt Elev	8500 5020 5020
--	------------------------	-----------------------------	---

RNAV (GPS) RWY 33

NORTHERN COLORADO RGNL (FNL)

RNP APCH-GPS.	MALSR 	MISSED APPROACH: Climb to 5600, then climbing right turn to 7400 direct LPORT and hold.
---------------	-----------	---

ATIS 135.075	DENVER APP CON 134.85 251.125	NOCO TOWER ★ 118.4 (CTAF)	GND CON 121.65	CLNC DEL 120.25 (When twr closed)
------------------------	---	-------------------------------------	--------------------------	--



CATEGORY	A	B	C	D
LPV DA		5220-½	200 (200-½)	
LNAV/VNAV DA		5329-½	309 (400-½)	
LNAV MDA	5380-½	360 (400-½)	5380-⅝	360 (400-⅝)
CIRCLING	5480-1 460 (500-1)	5520-1 500 (500-1)	5520-1½ 500 (500-½)	5700-2¼ 680 (700-2¼)

SW-1, 08 AUG 2024 to 05 SEP 2024

SW-1, 08 AUG 2024 to 05 SEP 2024