

WAAS CH <b>53321</b> <b>W17A</b>	APP CRS <b>170°</b>	Rwy Idg TDZE Apt Elev	<b>6501</b> <b>1277</b> <b>1277</b>
--	------------------------	-----------------------------	---

# RNAV (GPS) RWY 17

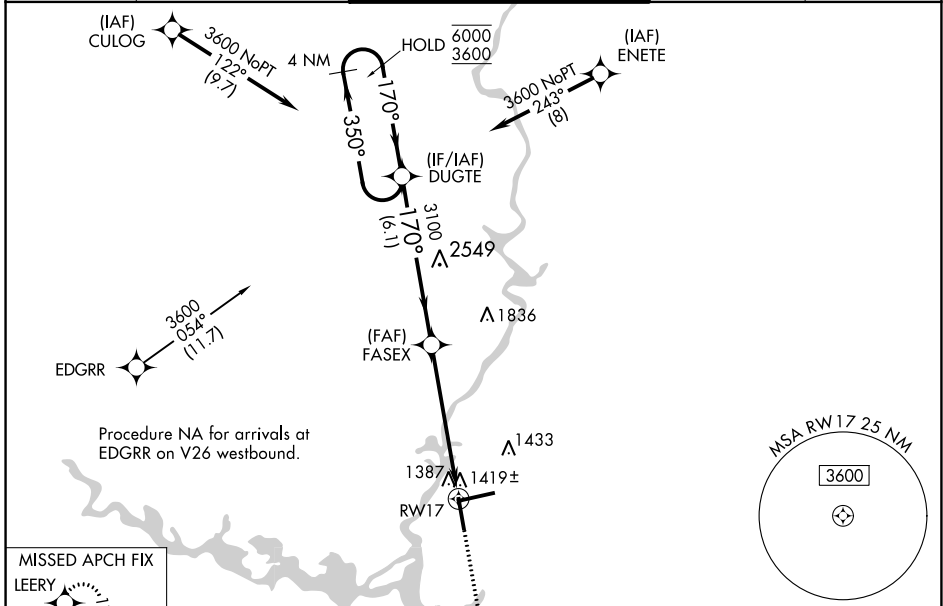
CENTRAL WISCONSIN (CWA)

RNP APCH - GPS.

**⚠** Rwy 17 helicopter visibility reduction below 3/4 SM NA.  
**⚠** For uncompensated Baro-VNAV systems, LNAV/VNAV NA below -17°C or above 54°C.

MISSED APPROACH:  
Climb to 2900 direct LEERY and hold.

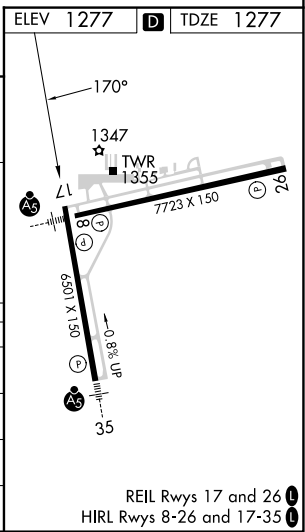
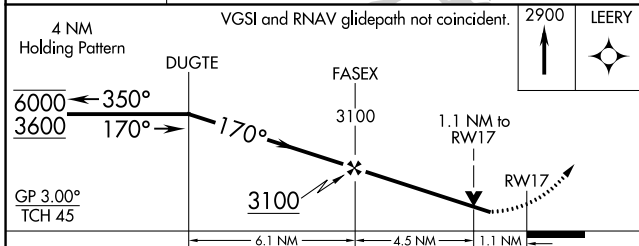
ATIS <b>127.45</b>	MINNEAPOLIS CENTER <b>124.4 317.7</b>	CWA TOWER★ <b>119.75 (CTAF) 0 360.7</b>	GND CON <b>121.9 360.7</b>	UNICOM <b>122.95</b>
-----------------------	--	--	-------------------------------	-------------------------



4 NM Holding Pattern

VGSI and RNAV glidepath not coincident.

ELEV 1277 TDZE 1277



CATEGORY	A	B	C	D
LPV DA		1534-1	257 (300-1)	
LNAV/VNAV DA		1601-1 1/8	324 (400-1 1/8)	
LNAV MDA	1680-1	403 (500-1)	1680-1 1/8	403 (500-1 1/8)
<b>C</b> CIRCLING	1740-1	463 (500-1)	1740-1 1/2	1840-2 563 (600-2)

EC-3, 31 OCT 2024 to 28 NOV 2024

EC-3, 31 OCT 2024 to 28 NOV 2024