

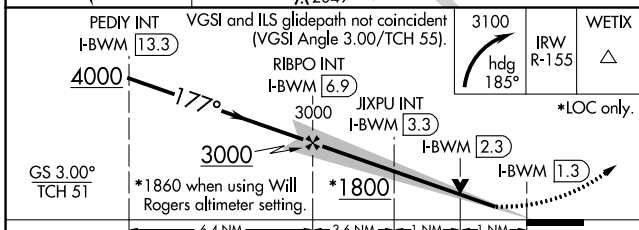
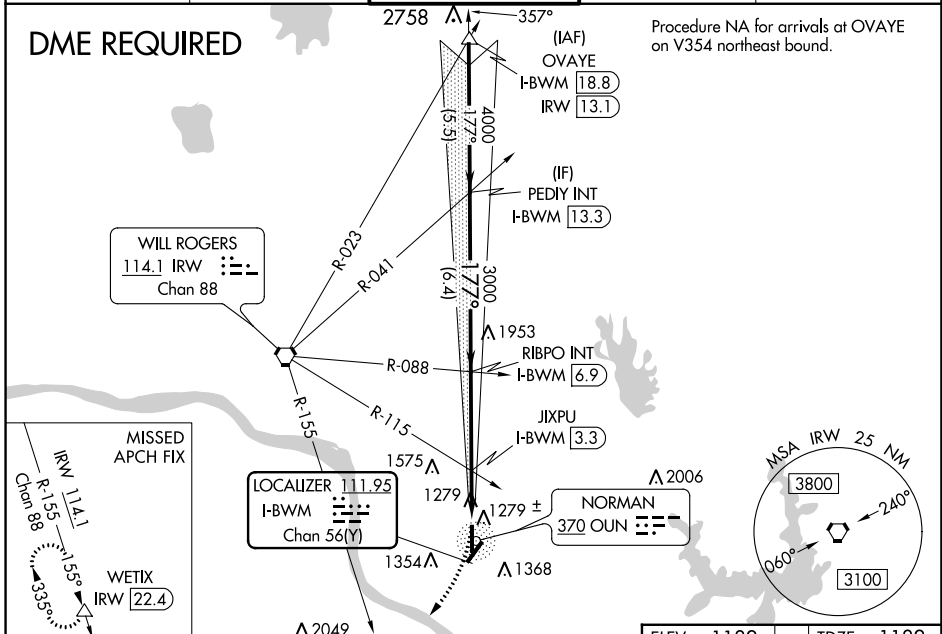
LOC/DME I-BWMM 111.95 Chan 56(Y)	APP CRS 177°	Rwy Idg 5199 TDZE 1182 Apt Elev 1182
--	------------------------	---

ILS or LOC RWY 18

UNIVERSITY OF OKLAHOMA WESTHEIMER (OUN)

⚠ Circling NA southeast of Rwy 3-21. DME Required. VDP NA with Will Rogers altimeter setting. When local altimeter setting not received, use Will Rogers World altimeter setting and increase all DA 41 feet; increase all MDA 60 feet. Increase visibility S-LOC 18 and JIXPU Fix Minimums Cats C/D 1/2 mile, increase Circling Cats C/D 1/4 mile.	MALSR A5	MISSED APPROACH: Climbing right turn to 3100 on heading 185° and IRW VORTAC R-155 to WETIX/IRW VORTAC 22.4 DME and hold.
--	--------------------	--

AWOS-3PT 119.55	OKE CITY APP CON 120.45 288.325	WESTHEIMER TOWER ★ 118.0 (CTAF)	GND CON 121.6	UNICOM 122.95
---------------------------	---	---	-------------------------	-------------------------



ELEV 1182	TDZE 1182
REIL Rwy 36 MRL Rwys 3-21 and 18-36 FAF to MAP 5.6 NM	
Knots	60 90 120 150 180
Min:Sec	5:36 3:44 2:48 2:14 1:52

CATEGORY	A	B	C	D
S-ILS 18		1382-1/2	200 (200-1/2)	
S-LOC 18	1800-1/2	618 (700-1/2)	1800-13/8	618 (700-13/8)
C CIRCLING	1800-1	618 (700-1)	1940-2 1/4 758 (800-2 1/4)	1940-2 1/2 758 (800-2 1/2)
JIXPU FIX MINIMUMS (DUAL VOR RECEIVERS OR DME REQUIRED)				
S-LOC 18	1540-1/2	358 (400-1/2)	1540-5/8	358 (400-5/8)
C CIRCLING	1660-1	478 (500-1)	1940-2 1/4 758 (800-2 1/4)	1940-2 1/2 758 (800-2 1/2)

SC-1, 08 AUG 2024 to 05 SEP 2024

SC-1, 08 AUG 2024 to 05 SEP 2024