

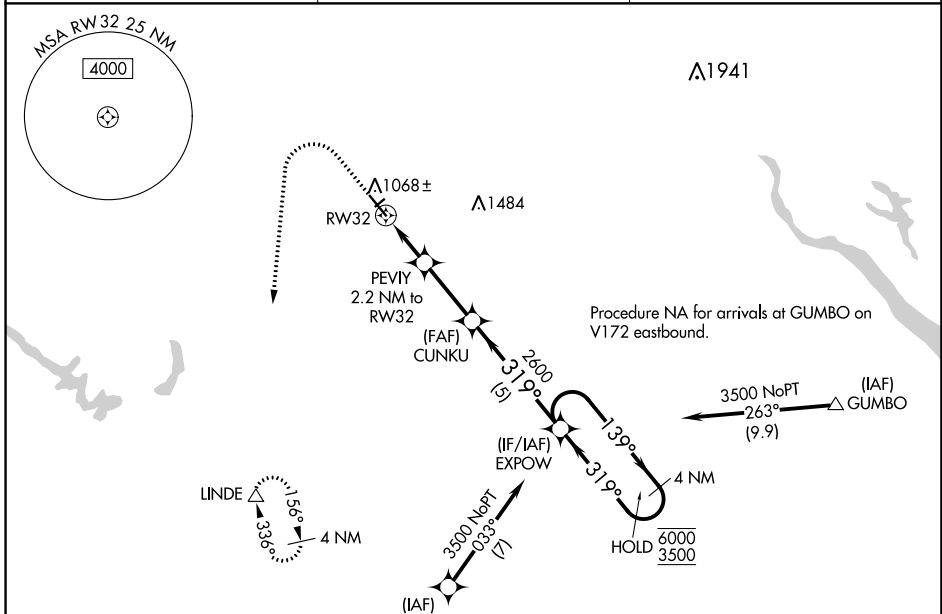
WAAS CH <b>53345</b> <b>W32A</b>	APP CRS <b>319°</b>	Rwy Idg TDZE Apt Elev	<b>5500</b> <b>1010</b> <b>1013</b>
--	------------------------	-----------------------------	---

# RNAV (GPS) RWY 32

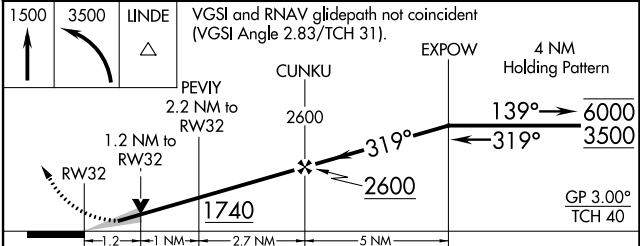
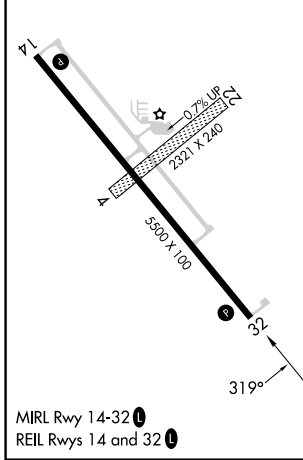
PERRY MUNI (P.R.O)

RNP APCH - GPS.	MISSED APPROACH: Climb to 1500 then climbing left turn to 3500 direct LINDE and hold.
<p>⚠ Circling NA to Rwy's 4 and 22. For uncompensated Baro-VNAV systems, LNAV/VNAV NA below -17°C or above 54°C.</p>	

AWOS-3 <b>118.0</b>	DES MOINES APP CON <b>123.9 360.7</b>	UNICOM <b>122.8 (CTAF) 0</b>
------------------------	--	---------------------------------



ELEV 1013	TDZE 1010
-----------	-----------



CATEGORY	A	B	C	D
LPV DA		1260-3/4	250 (300-3/4)	
LNAV/VNAV DA		1310-7/8	300 (300-7/8)	
LNAV MDA		1380-1	370 (400-1)	
<b>C</b> CIRCLING	1440-1 427 (500-1)	1480-1 467 (500-1)	1600-1 1/2 587 (600-1 1/2)	1840-2 3/4 827 (900-2 3/4)

NC-3, 31 OCT 2024 to 28 NOV 2024

NC-3, 31 OCT 2024 to 28 NOV 2024