

PERRY, IOWA

AL-5668 (FAA)

24249

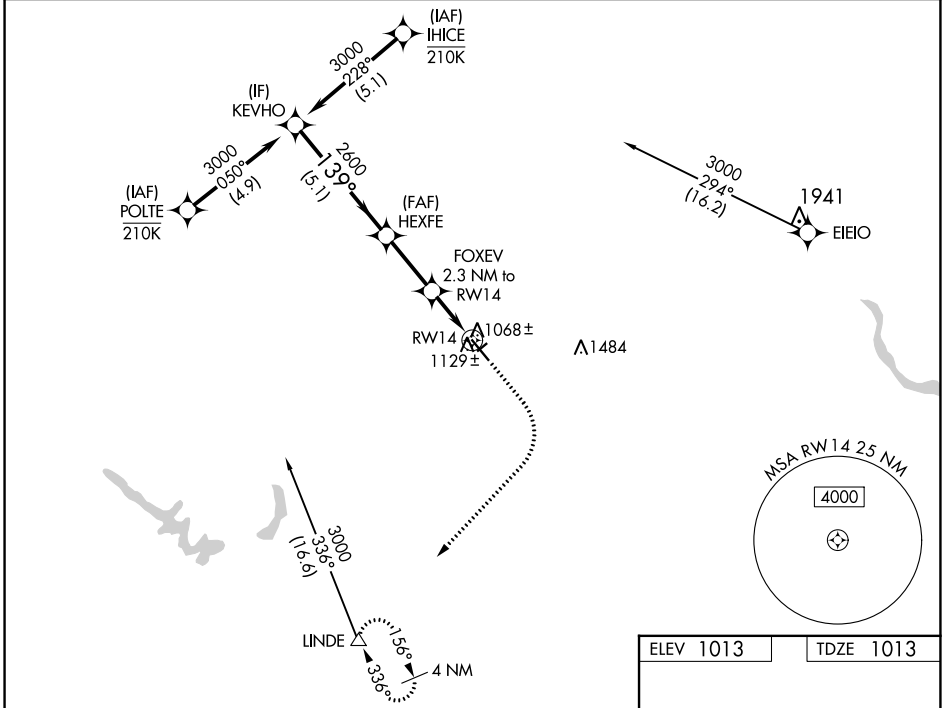
WAAS CH 99345 W14A	APP CRS 139°	Rwy Idg TDZE Apt Elev	5500 1013 1013
--	------------------------	-----------------------------	---

RNAV (GPS) RWY 14

PERRY MUNI (PRO)

RNP APCH - GPS.	MISSED APPROACH: Climb to 1500 then climbing right turn to 3500 direct LINDE and hold.
<p>⚠ Circling NA to Rwys 4 and 22. For uncompensated Baro-VNAV systems, LNAV/VNAV NA below -17°C or above 54°C.</p>	

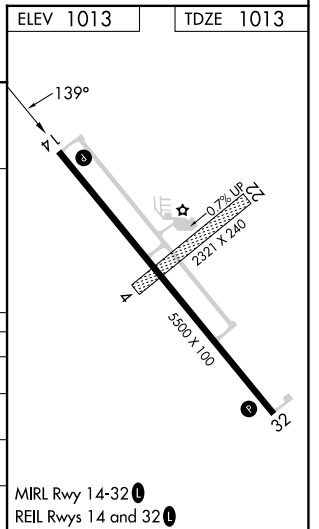
AWOS-3 118.0	DES MOINES APP CON 123.9 360.7	UNICOM 122.8 (CTAF) 0
------------------------	--	---------------------------------



VGSI and RNAV glidepath not coincident (VGSI Angle 2.83/TCH 32).

KEYVHO	HEXFE	FOXEV	LINDE
3000	2600	1780	
GP 3.00° TCH 40			
5.1 NM	2.6 NM	1.2 NM	1.1 NM
1500	3500	LINDE	

CATEGORY	A	B	C	D
LPV DA		1263-3/4	250 (300-3/4)	
LNAV/VNAV DA		1310-7/8	297 (300-7/8)	
LNAV MDA		1380-1	367 (400-1)	
CIRCLING	1440-1 427 (500-1)	1480-1 467 (500-1)	1600-1 1/2 587 (600-1 1/2)	1840-2 3/4 827 (900-2 3/4)



PERRY, IOWA
Orig 05SEP24

41°50'N-94°10'W

RNAV (GPS) RWY 14

PERRY MUNI (PRO)

NC-3, 31 OCT 2024 to 28 NOV 2024

NC-3, 31 OCT 2024 to 28 NOV 2024