

BLUFFTON, OHIO

AL-5665 (FAA)

18200

VORTAC FBC 108.2 Chan 19	APP CRS 233°	Rwy Idg 4126 TDZE 850 Apt Elev 851
--	------------------------	---

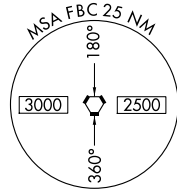
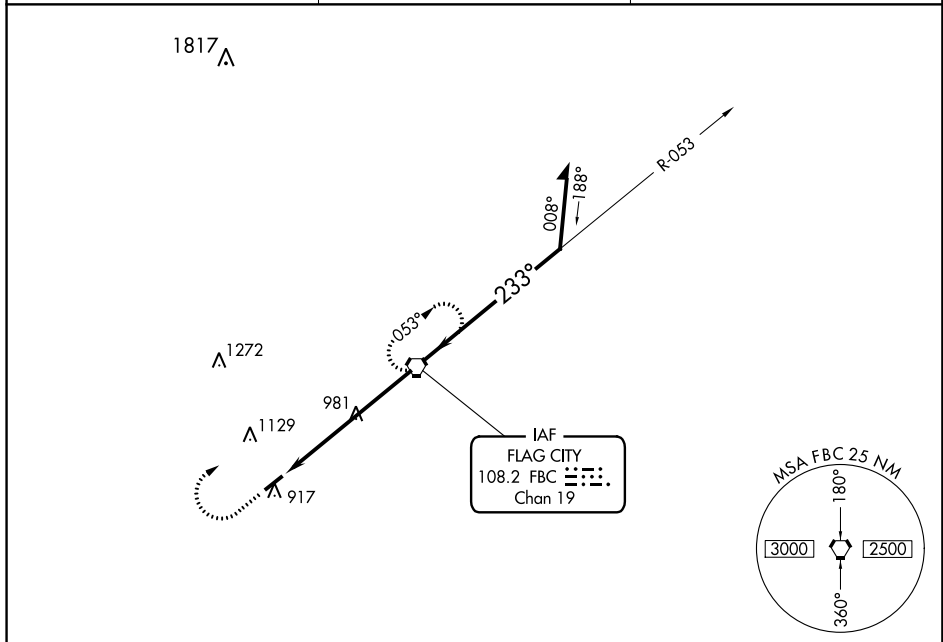
VOR RWY 23

BLUFFTON (5G7)

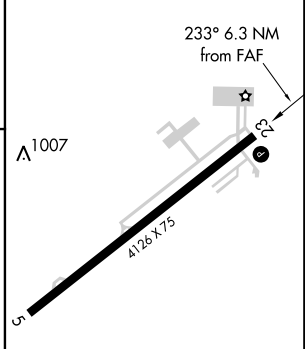
⚠ Visibility reduction by helicopters NA. Use Findlay altimeter setting; when not received, use Lima Allen County altimeter setting and increase all MDA 20 feet, and Circling Cat D visibility ¼ mile.

⚠ NA MISSED APPROACH: Climb to 2500 then right turn direct FBC VORTAC and hold.

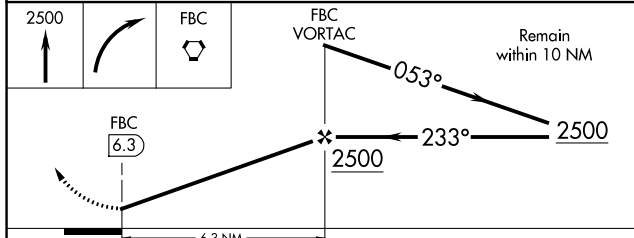
FINDLAY ASOS 132.85	TOLEDO APP CON 120.8 317.55	UNICOM 122.8 (CTAF) 0
-------------------------------	---------------------------------------	---------------------------------



ELEV 851	TDZE 850
----------	----------



REIL Rwy 5	REIL Rwy 23 0	MIRL Rwy 5-23 0			
FAF to MAP 6.3 NM					
Knots	60	90	120	150	180
Min:Sec	6:18	4:12	3:09	2:31	2:06



CATEGORY	A	B	C	D
S-23	1280-1 430 (500-1)		1280-1 ¼ 430 (500-1 ¼)	1280-1 ½ 430 (500-1 ½)
CIRCLING	1340-1 489 (500-1)		1340-1 ½ 489 (500-1 ½)	1520-2 669 (700-2)

BLUFFTON, OHIO
Amdt 7A 18NOV10

40°53'N-83°52'W

BLUFFTON (5G7) VOR RWY 23

EC-2, 12 SEP 2019 to 10 OCT 2019

EC-2, 12 SEP 2019 to 10 OCT 2019