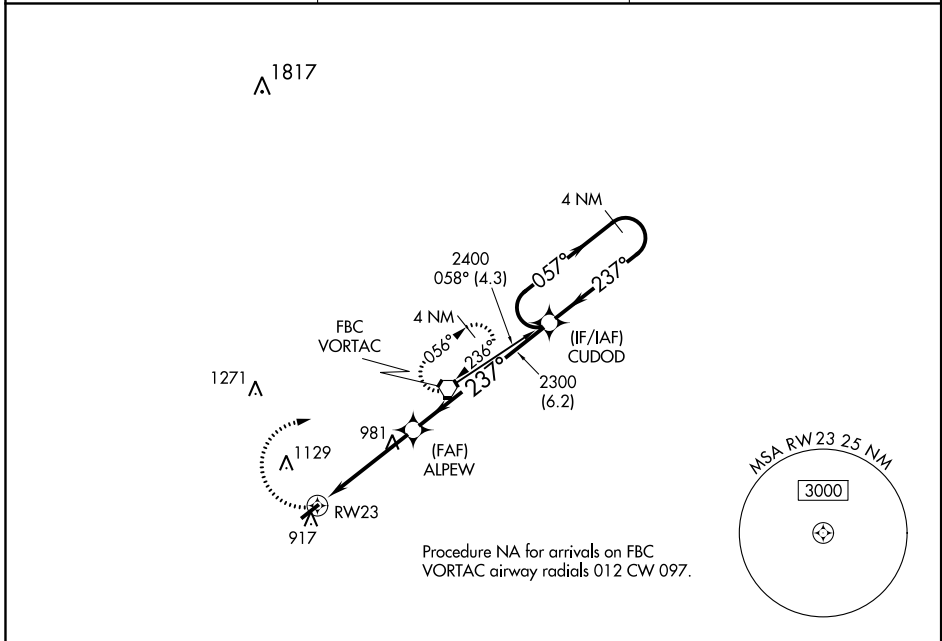


APP CRS <b>237°</b>	Rwy Idg <b>4126</b>
	TDZE <b>850</b>
	Apt Elev <b>851</b>

# RNAV (GPS) RWY 23

BLUFFTON (5G7)

<p><b>▽</b> DME/DME RNP-0.3 NA. Visibility reduction by helicopters NA. Use Findlay altimeter setting; when not received use Lima Allen County altimeter setting and increase all MDA 20 feet and Circling Cat D visibility ¼ mile.</p> <p><b>△</b> NA</p>	<p>MISSED APPROACH: Climbing right turn to 2500 direct FBC VORTAC and hold.</p>
<p>FINDLAY ASOS <b>132.85</b></p>	<p>TOLEDO APP CON <b>120.8 317.55</b></p>
<p>UNICOM <b>122.8 (CTAF) 0</b></p>	



EC-2, 12 SEP 2019 to 10 OCT 2019

EC-2, 12 SEP 2019 to 10 OCT 2019

