

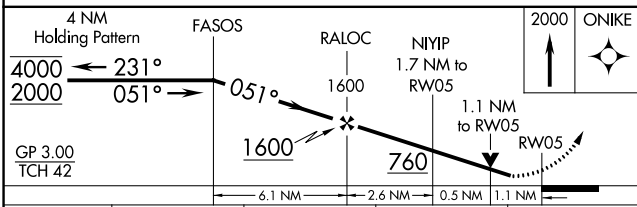
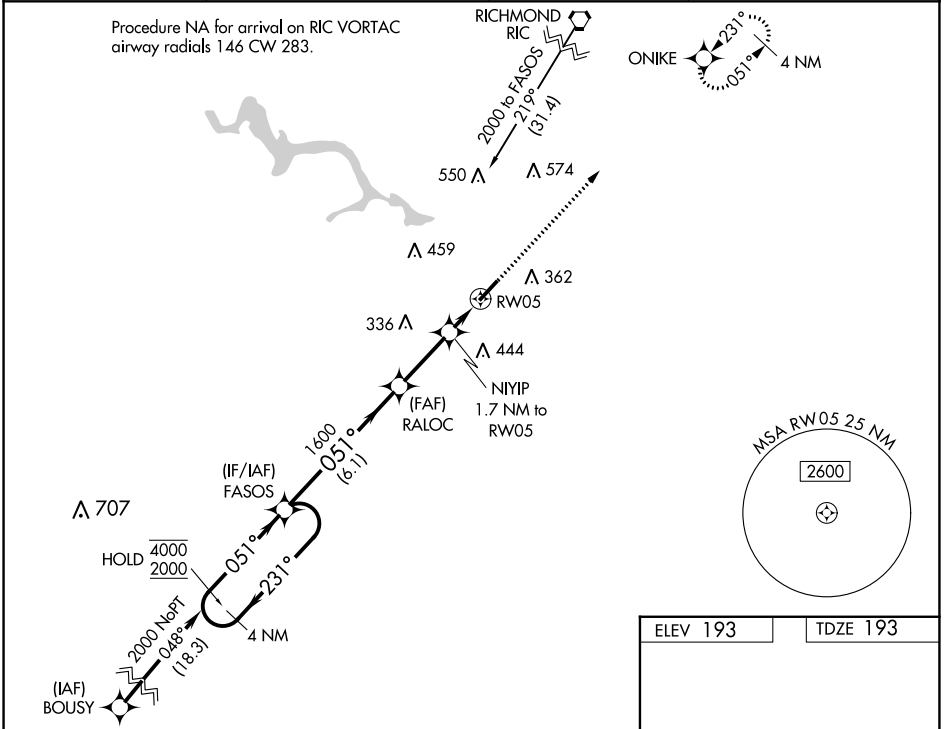
WAAS CH <b>70705</b> <b>W05A</b>	APP CRS <b>051°</b>	Rwy Idg TDZE Apt Elev	<b>5002</b> <b>193</b> <b>193</b>
--	------------------------	-----------------------------	---

# RNAV (GPS) RWY 5

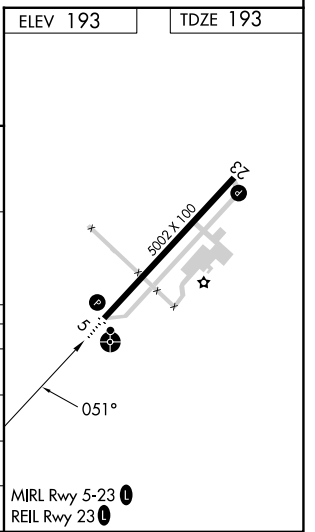
TRI CITIES EXEC/DINWIDDIE COUNTY (PTB)

RNP APCH - GPS.	ODALS	MISSED APPROACH: Climb to 2000 direct ONIKE and hold.
<p>▼ Inop table does not apply to LPV all Cats, LNAV/VNAV all Cats and LNAV Cat A and B.</p> <p>▲ Rwy 5 helicopter visibility reduction below 3/4 SM NA. For uncompensated Baro-VNAV systems, LNAV/VNAV NA below -15°C or above 54°C.</p>		

AWOS-3 <b>133.325</b>	POTOMAC APP CON <b>126.75 307.2</b>	GCO <b>135.075</b>	UNICOM <b>122.7 (CTAF) ①</b>
--------------------------	--	-----------------------	---------------------------------



CATEGORY	A	B	C	D
LPV DA	511-1	318 (400-1)		NA
LNAV/VNAV DA	597-1	404 (500-1)		NA
LNAV MDA	600-1	407 (500-1)		NA
CIRCLING	680-1	487 (500-1)	760-1½ 567 (600-1½)	NA



NE-3, 03 OCT 2024 to 31 OCT 2024

NE-3, 03 OCT 2024 to 31 OCT 2024