

|             |          |             |
|-------------|----------|-------------|
| APP CRS     | Rwy Idg  | <b>7110</b> |
| <b>032°</b> | TDZE     | <b>1470</b> |
|             | Apt Elev | <b>1510</b> |

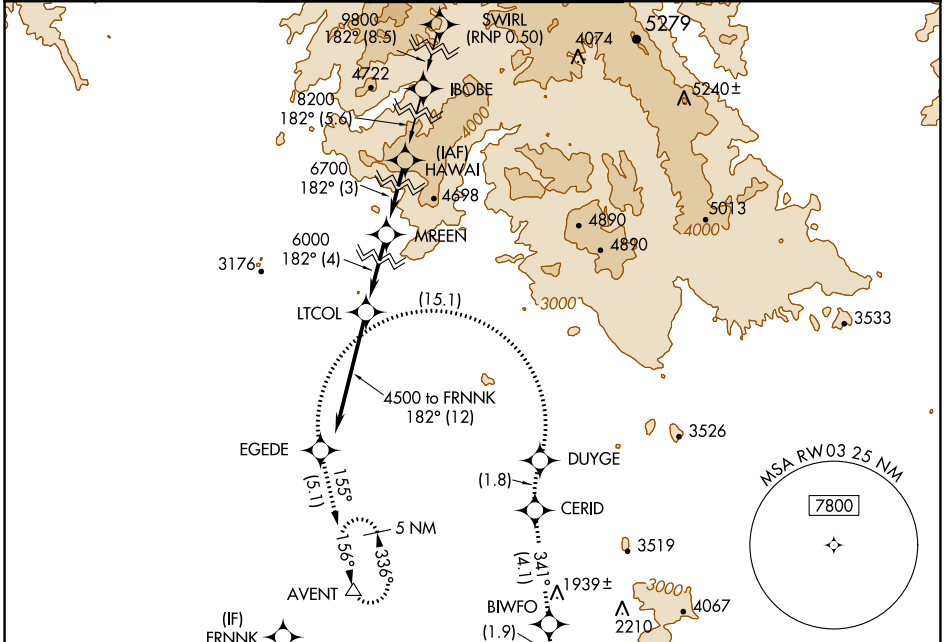
# RNAV (RNP) Y RWY 3

SCOTTSDALE (SDL)

**RF and GPS required.** Visibility reduction by helicopters NA. For uncompensated Baro-VNAV systems, procedure NA below 1°C (31°F) or above 54°C (130°F). When local altimeter setting not received procedure NA. Missed approach requires RNP less than 1.0.

**MISSED APPROACH:** Climb to 5000 via left turn to AFXUR, and via left turn to BIWFO, and via track 341° to CERID, and via right turn to DUYGE, and via left turn to EGEDE, and via track 155° to AVENT and hold.

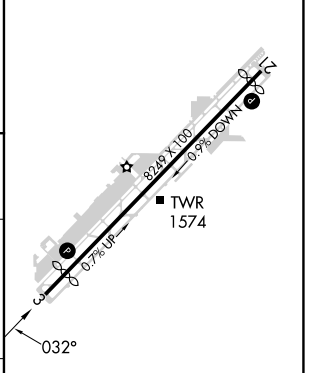
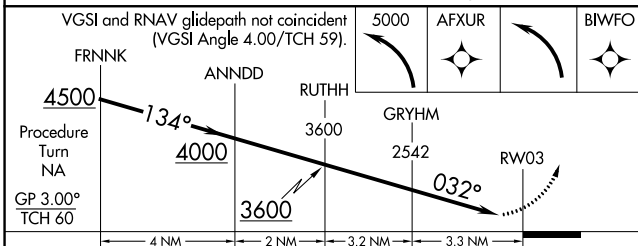
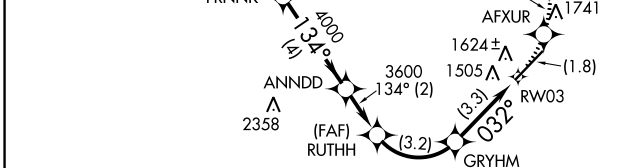
|              |                    |                       |              |              |
|--------------|--------------------|-----------------------|--------------|--------------|
| ATIS ★       | PHOENIX APP CON    | SCOTTSDALE TOWER ★    | GND CON      | CLNC DEL     |
| <b>118.6</b> | <b>120.7 239.0</b> | <b>119.9 (CTAF) 0</b> | <b>121.6</b> | <b>124.8</b> |



SW-4, 31 OCT 2024 to 28 NOV 2024

SW-4, 31 OCT 2024 to 28 NOV 2024

|           |                    |
|-----------|--------------------|
| ELEV 1510 | <b>D</b> TDZE 1470 |
|-----------|--------------------|



|             |         |              |   |    |
|-------------|---------|--------------|---|----|
| CATEGORY    | A       | B            | C | D  |
| RNP 0.30 DA | 1829-1¼ | 359 (400-1¼) |   | NA |

**AUTHORIZATION REQUIRED**

MIRL Rwy 3-21 0  
REIL Rwy 3 and 21 0