

APP CRS	Rwy Idg	7669
212°	TDZE	1507
	Apt Elev	1510

RNAV (RNP) RWY 21

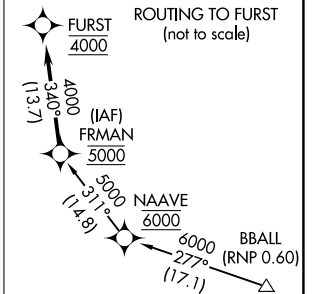
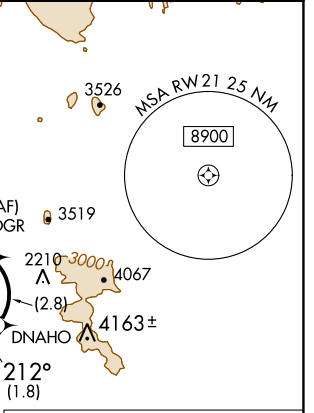
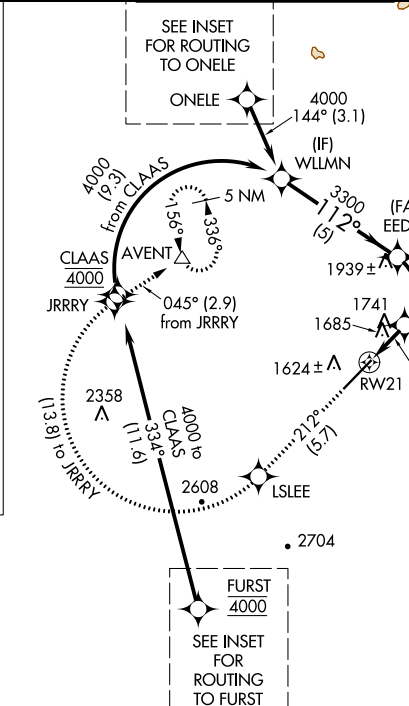
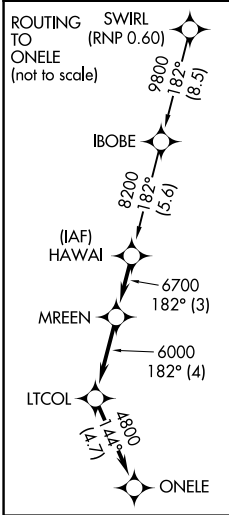
SCOTTSDALE (SDL)

RNP AR APCH - GPS, RF, min RNP 0.60. Authorization required.

▼ For uncompensated Baro-VNAV systems, procedure NA below 1°C or above 54°C. When local altimeter setting not received procedure NA.

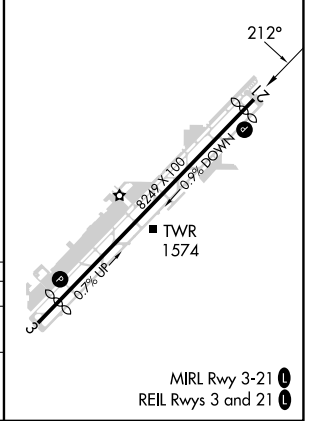
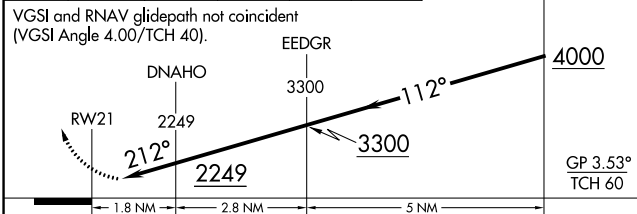
MISSED APPROACH: Climb to 5000 on track 212° to LSLEE and right turn to JRRRY and on track 045° to AVENT and hold.

ATIS * 118.6	PHOENIX APP CON 120.7 239.0	SCOTTSDALE TOWER * 119.9 (CTAF) 0	GND CON 121.6	CLNC DEL 124.8
------------------------	---------------------------------------	---	-------------------------	--------------------------



5000	LSLEE	JRRRY	tr 045°	AVENT
↑ tr 212°				

ELEV 1510	D	TDZE 1507
-----------	---	-----------



CATEGORY	A	B	C	D
RNP 0.16 DA	1993-1 3/8	486 (500-1 3/8)		NA

AUTHORIZATION REQUIRED

MIRL Rwy 3-21 0

REIL Rws 3 and 21 0

SW-4, 31 OCT 2024 to 28 NOV 2024

SW-4, 31 OCT 2024 to 28 NOV 2024