

FTHLS SIX DEPARTURE (RNAV)

AL-5651 (FAA)

SCOTTSDALE (SDL)
SCOTTSDALE, ARIZONA

SW-4, 03 OCT 2024 to 31 OCT 2024

TAKEOFF MINIMUMS

Rwy 3: Standard with minimum climb of 445' per NM to 4600.
Rwy 21: Standard with minimum climb of 300' per NM to 4600.

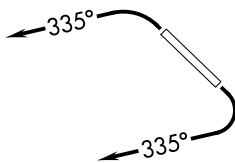
NOTE: RNAV 1.
NOTE: Turbojets and turboprops only.
NOTE: RADAR required.
NOTE: GPS required.

NOTE: ABQ transition ATC assigned only.
NOTE: Aircraft filing over ACH, LBL, ONM, CNX, PNH, MMB, TCC, IRW and TXO file FTHLS DEPARTURE.

NOTE: Aircraft filing over ABQ, CIM, FTI, and GCK file LALUZ DEPARTURE.
NOTE: Aircraft filing over DEN, RSK, ALS, and points north of ALS file YOTES DEPARTURE.

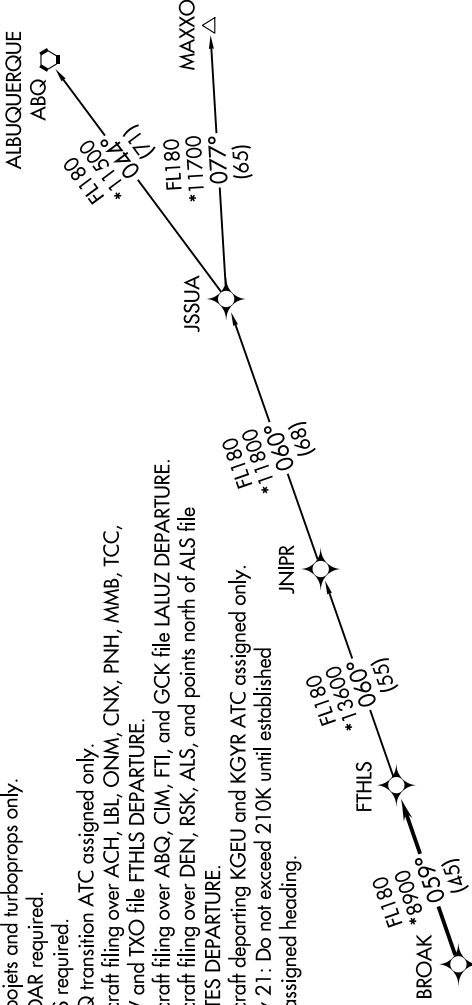
NOTE: Aircraft departing KGEU and KGYR ATC assigned only.
NOTE: Rwy 21: Do not exceed 210K until established on assigned heading.

ATIS *
118.6
CLINC DEL
124.8
GND CON
121.6
SCOTTSDALE TOWER *
119.9
PHOENIX DEP CON
120.7 239.0



N

TOP ALTITUDE: ASSIGNED BY ATC



DEPARTURE ROUTE DESCRIPTION

TAKEOFF RUNWAY 3: Climbing left turn heading 335° or as assigned by ATC, thence. . . .
TAKEOFF RUNWAY 21: Climbing right turn heading 335° or as assigned by ATC. Thence. . . .

. . . expect RADAR vectors to BROAK, then on track 059° to FTHLS, then on (transition).
Maintain ATC assigned altitude, expect filed altitude 3 minutes after departure.

ALBUQUERQUE TRANSITION (FTHLS6.ABQ)

JNIPR TRANSITION (FTHLS6.JNIPR)

MAXXO TRANSITION (FTHLS6.MAXXO)

NOTE: Chart not to scale.