

VOR BJB <b>109.8</b>	APP CRS <b>123°</b>	Rwy Idg <b>4494</b> TDZE <b>882</b> Apt Elev <b>887</b>
-------------------------	------------------------	---------------------------------------------------------------

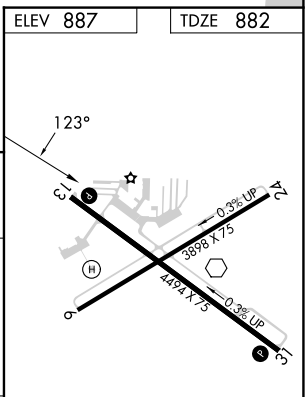
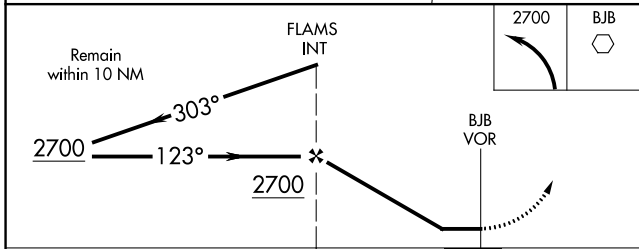
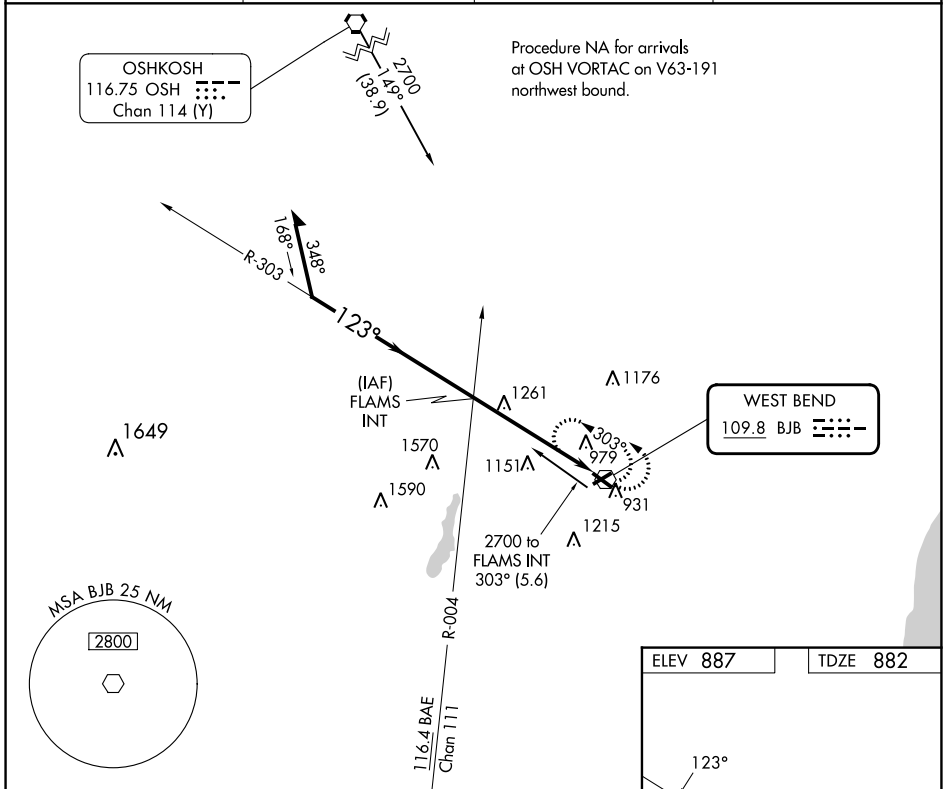
# VOR RWY 13

WEST BEND MUNI (E/TB)

**⚠** Rwy 13 helicopter visibility reduction below 3/4 SM NA. When local altimeter setting not received, use Lawrence J Timmerman altimeter setting and increase all MDAs 80 feet and visibility Cat C/D 1/4 SM.

**⚠** MISSED APPROACH: Climbing left turn to 2700 in BJB VOR holding pattern.

AWOS-3 <b>120.0</b>	MILWAUKEE APP CON <b>125.35 307.0</b>	CLNC DEL <b>124.75</b>	UNICOM <b>123.05 (CTAF) 0</b>
------------------------	------------------------------------------	---------------------------	----------------------------------



CATEGORY	A	B	C	D
S-13	1540-1	658 (700-1)	1540-1 3/4 658 (700-1 3/4)	1540-2 658 (700-2)
CIRCLING	1540-1	653 (700-1)	1560-2 673 (700-2)	1560-2 1/4 673 (700-2 1/4)

REIL Rwy 13 and 31 0  
MIRL Rwy 6-24 and 13-31 0

EC-3, 31 OCT 2024 to 28 NOV 2024

EC-3, 31 OCT 2024 to 28 NOV 2024