

(UECKR6.UECKR) 24137

# UECKR SIX DEPARTURE (RNAV)

AL-5649 (FAA)

WEST BEND MUNI (E/TB)  
WEST BEND, WISCONSIN

AWOS-3  
120.0  
CLNC DEL  
124.75  
MILWAUKEE DEP CON  
125.35 307.0

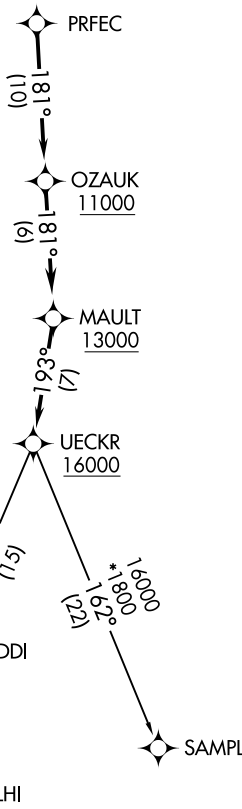


**TOP ALTITUDE:  
ASSIGNED BY ATC**

### TAKEOFF MINIMUMS

- Rwy 6: Standard.
- Rwy 13: 300-1½ or standard with minimum climb of 260' per NM to 1200.
- Rwy 24: 300-2 or standard with minimum climb of 250' per NM to 1400.
- Rwy 31: 300-1¼ or standard with minimum climb of 220' per NM to 1100.

- NOTE: RNAV 1.
- NOTE: GPS or DME/DME/IRU required.
- NOTE: RADAR required.
- NOTE: Turbojet aircraft maintain 250K until advised by ATC.
- NOTE: Notify ATC if unable to comply with crossing restrictions.



NOTE: Chart not to scale.

### DEPARTURE ROUTE DESCRIPTION

Climb on assigned heading for RADAR vectors to PRFEC, thence....

...on track 181° to cross OZAUK at or above 11000, then on track 181° to cross MAULT at or above 13000, then on track 193° to cross UECKR at or above 16000, then on (transition). Maintain ATC assigned altitude, expect filed altitude ten minutes after departure.

DELHI TRANSITION (UECKR6.DELHI)

SAMPL TRANSITION (UECKR6.SAMPL)

# UECKR SIX DEPARTURE (RNAV)

(UECKR6.UECKR) 26MAR20

WEST BEND, WISCONSIN  
WEST BEND MUNI (E/TB)

EC-3, 31 OCT 2024 to 28 NOV 2024

EC-3, 31 OCT 2024 to 28 NOV 2024