

RNAV (GPS) RWY 6

WEST BEND MUNI (ETB)

APP CRS	Rwy Idg	3898
060°	TDZE	887
	Apt Elev	887

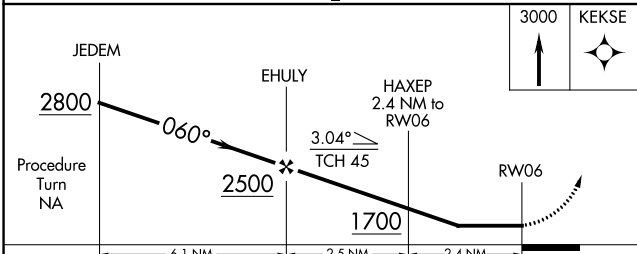
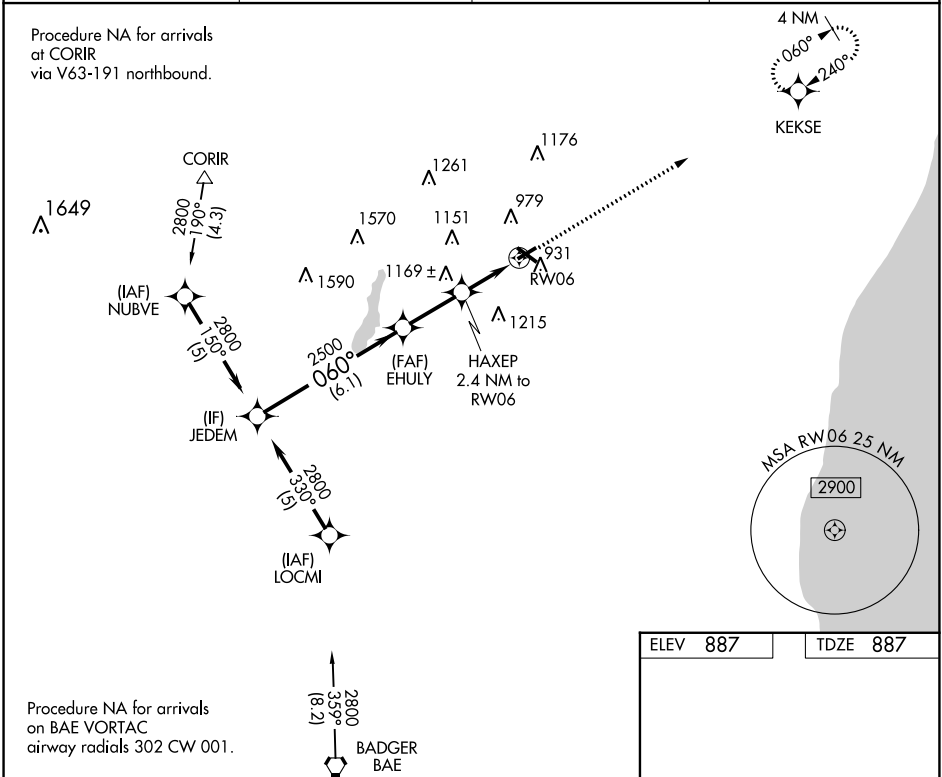
RNP APCH - GPS.

▼ When local altimeter setting not received, use Milwaukee/Lawrence J. Timmerman altimeter setting and increase all MDA 80 feet and LNAV and Circling Cat C/D visibility ¼ mile.

▲ Night landing: Rwy 6 NA. Helicopter visibility reduction below 1 SM NA.

MISSED APPROACH:
Climb to 3000 direct KEKSE and hold.

AWOS-3 120.0	MILWAUKEE APP CON 125.35 307.0	CLNC DEL 124.75	UNICOM 123.05 (CTAF) ①
------------------------	--	---------------------------	----------------------------------



ELEV 887	TDZE 887
----------	----------

REIL Rwy 13 and 31 ①

MIRL Rwy 6-24 and 13-31 ①

CATEGORY	A	B	C	D
LNAV MDA	1460-1 573 (600-1)	573 (600-1)	1460-1½ 573 (600-1½)	1460-1¾ 573 (600-1¾)
CIRCLING	1460-1 573 (600-1)	1520-1 633 (700-1)	1560-2 673 (700-2)	1560-2¼ 673 (700-2¼)

EC-3, 31 OCT 2024 to 28 NOV 2024

EC-3, 31 OCT 2024 to 28 NOV 2024