

LOC/DME I-UVM 111.3 Chan 50	APP CRS 305°	Rwy Idg 5002 TDZE 925 Apt Elev 941
---	------------------------	---

LOC RWY 31

BLUE RIDGE (MTV)

ADF or DME required for procedure entry. ADF required.

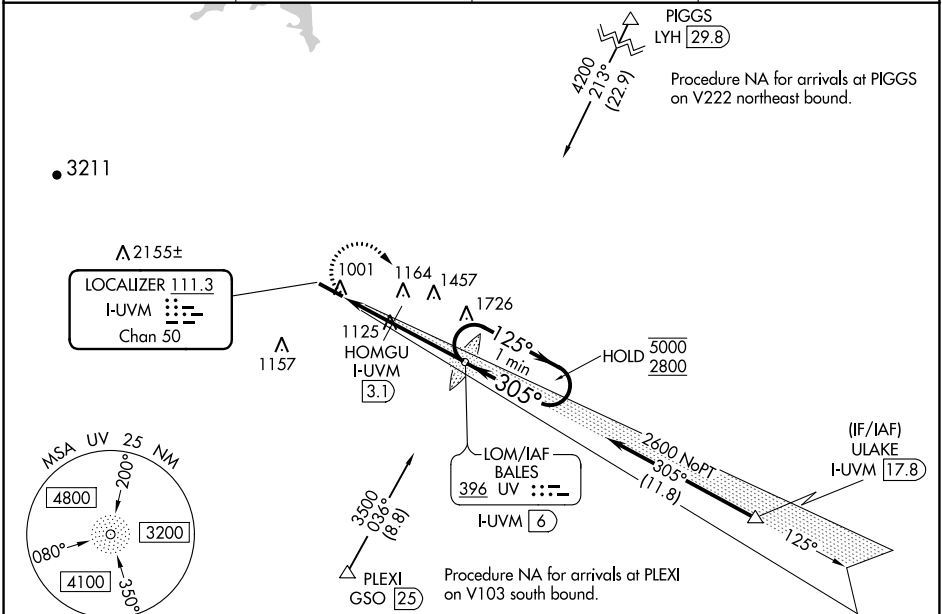
ODALS

MISSED APPROACH: Climbing right turn to 2800 direct BALES LOM/I-UVM & DME and hold, continue climb in hold to 2800.

Rwy 31 helicopter visibility reduction below 3/4 SM NA. For inop ALS while using HOMGU fix minimums, increase Cat C/D visibility to 1 1/8 SM.

-17°C

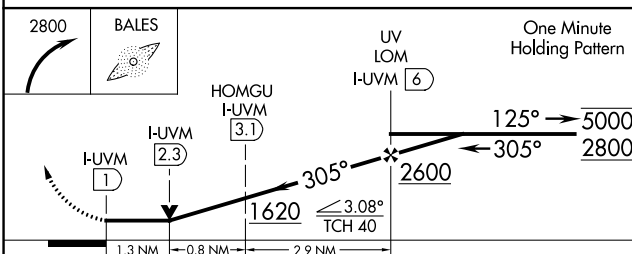
AWOS-3 118.45	GREENSBORO APP CON 124.35 269.225	CLNC DEL 124.85	UNICOM 122.7 (CTAF)
-------------------------	---	---------------------------	-------------------------------



NE-3, 26 JAN 2023 to 23 FEB 2023

NE-3, 26 JAN 2023 to 23 FEB 2023

ELEV 941	TDZE 925
----------	----------



CATEGORY	A	B	C	D
S-31	1620-3/4	695 (700-3/4)	1620-1 1/8	695 (700-1 1/8)
C CIRCLING	1620-1	679 (700-1)	1620-2 679 (700-2)	1800-2 3/4 859 (900-2 3/4)
HOMGU FIX MINIMUMS				
S-31	1380-3/4	455 (500-3/4)	1380-1 1/8	455 (500-1 1/8)
C CIRCLING	1420-1 479 (500-1)	1440-1 499 (500-1)	1540-1 1/2 599 (600-1 1/2)	1800-2 3/4 859 (900-2 3/4)

MIRL Rwy 13-31 (1)
REIL Rwys 13 and 31 (1)

FAF to MAP 5 NM

Knots	60	90	120	150	180
Min:Sec	5:00	3:20	2:30	2:00	1:40