

VORTAC BNA	APP CRS	Rwy Idg	N/A
114.1	045°	TDZE	N/A
Chan 88		Apt Elev	583

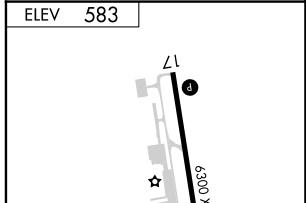
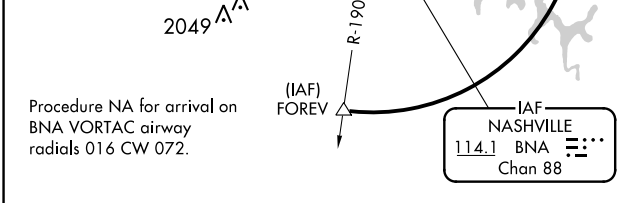
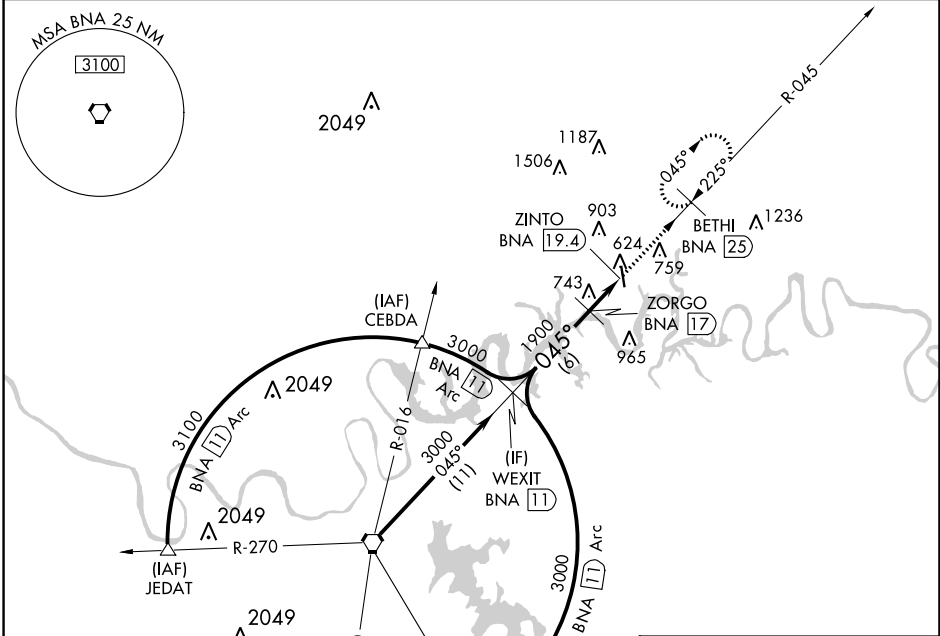
VOR-A
MUSIC CITY EXEC (X.N.X)

DME required.

▽ When local altimeter setting not received, use Nashville Intl altimeter setting and increase all MDA 60 feet, increase Cat C/D visibility 1/4 mile.

▲ MISSED APPROACH: Climb to 3000 on BNA VORTAC R-045 to BETHI/25 DME and hold, continue climb-in-hold to 3000.

AWOS-3 132.725	NASHVILLE APP CON 118.4 360.7	GCO 135.075	UNICOM 123.05 (CTAF) 0
--------------------------	---	-----------------------	---



	WEXIT BNA (11)	ZORGO BNA (17)	ZINTO BNA (19.4)	BETHI BNA (25)
	3000	1900	3000	3000
	6 NM		2.4 NM	
CATEGORY	A	B	C	D
C CIRCLING	1100-1 517 (600-1)	1120-1 537 (600-1)	1240-1 3/4 657 (700-1 3/4)	1280-2 1/4 697 (700-2 1/4)

MIRL Rwy 17-35 0
REIL Rwy 17 and 35 0

SE-1, 31 OCT 2024 to 28 NOV 2024

SE-1, 31 OCT 2024 to 28 NOV 2024