

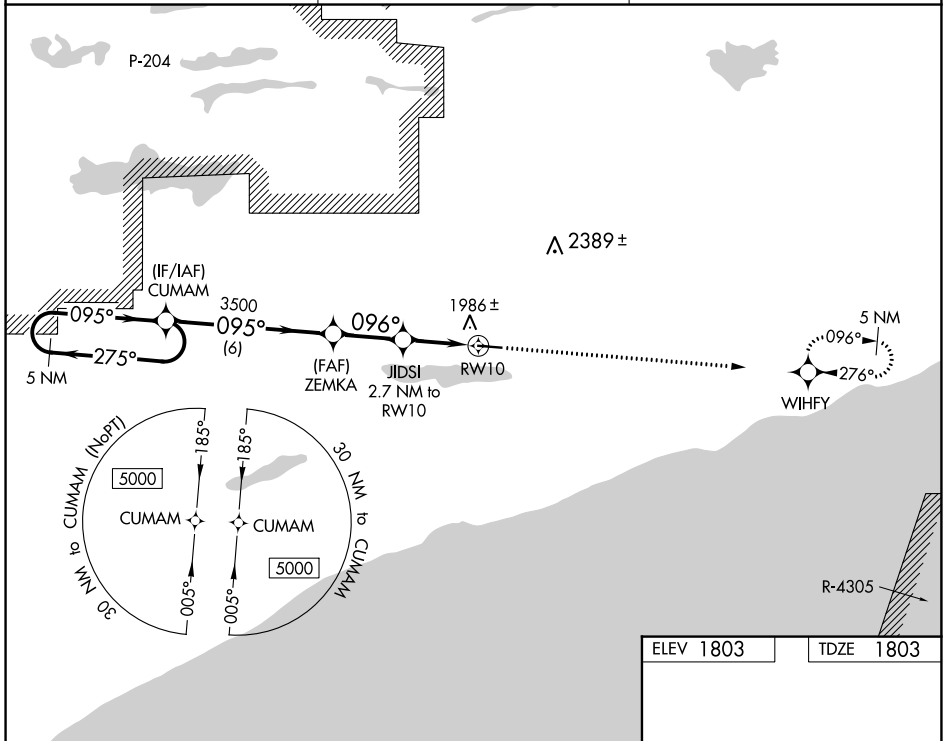
WAAS CH 45920 W10A	APP CRS 096°	Rwy Idg TDZE Apt Elev	5002 1803 1803
--	------------------------	-----------------------------	---

RNAV (GPS) RWY 10

GRAND MARAIS/COOK COUNTY (CKC)

RNP APCH.	MISSED APPROACH: Climb to 7000 direct WIHIFY and hold, continue climb-in-hold to 7000.
<p>▼ Rwy 10 helicopter visibility reduction below 1 SM NA. ▲ Procedure NA at night.</p>	

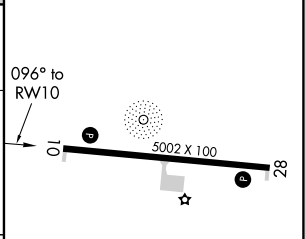
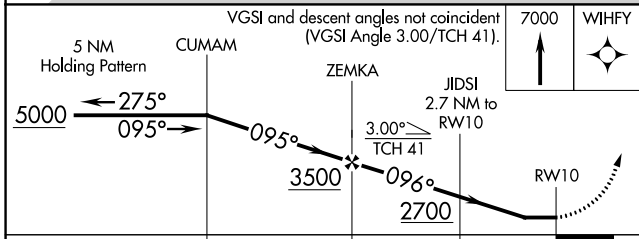
AWOS-3 119.925	MINNEAPOLIS CENTER 127.9 281.45	UNICOM 122.8 (CTAF) ①
--------------------------	---	---------------------------------



NC-1, 08 AUG 2024 to 05 SEP 2024

NC-1, 08 AUG 2024 to 05 SEP 2024

ELEV 1803	TDZE 1803
-----------	-----------



CATEGORY	A	B	C	D
LP MDA	2200-1	397 (400-1)	2200-1½	397 (400-1½)
RNAV MDA	2240-1	437 (500-1)	2240-1¼	437 (500-1¼)
Ⓢ CIRCLING	2300-1	497 (500-1)	2380-1½ 577 (600-1½)	2640-2¾ 837 (900-2¾)

MIRL Rwy 10-28 ①
REIL Rwys 10 and 28 ①