

ROSEAU, MINNESOTA

AL-5635 (FAA)

23334

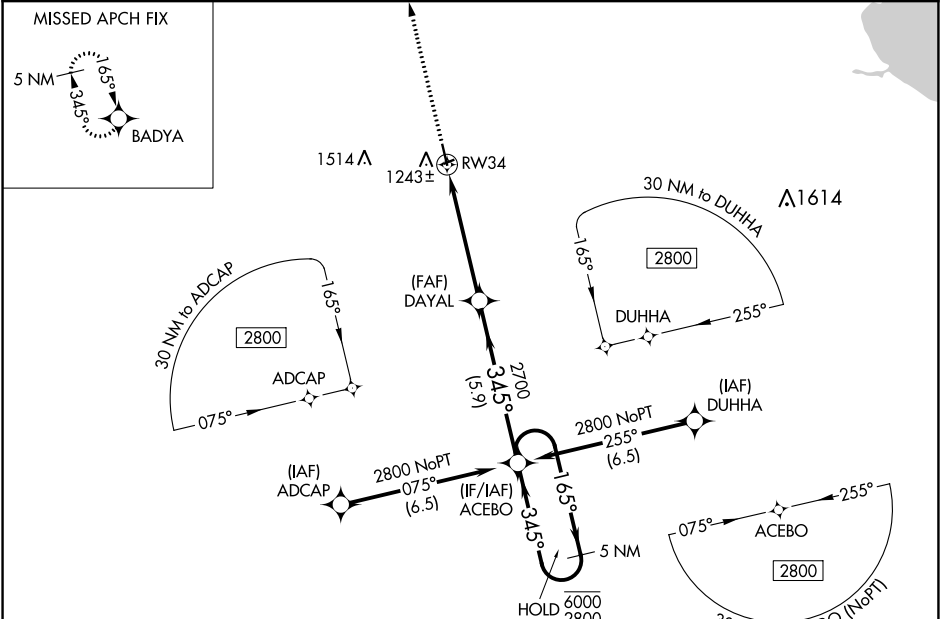
WAAS CH 99404 W34A	APP CRS 345°	Rwy Idg TDZE Apt Elev	4400 1060 1060
--	------------------------	-----------------------------	---

RNAV (GPS) RWY 34

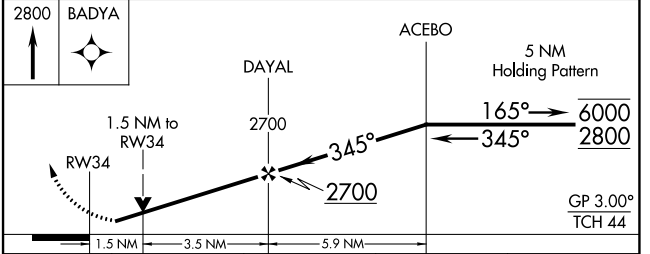
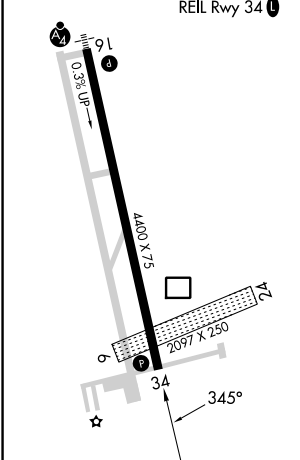
ROSEAU MUNI/RUDY BILLBERG FLD (R.O.X)

RNP APCH - GPS.	MISSED APPROACH: Climb to 2800 direct BADYA and hold.
<p>⚠ Circling NA to Rwys 6 and 24. Rwy 34 helicopter visibility reduction below $\frac{3}{4}$ SM NA. For uncompensated Baro-VNAV systems, LNAV/VNAV NA below -17°C or above 54°C.</p>	

AWOS-3 118.075	MINNEAPOLIS CENTER 134.75 251.1	UNICOM 122.8 (CTAF) 📻
--------------------------	---	--



ELEV 1060	TDZE 1060
-----------	-----------



CATEGORY	A	B	C	D
LPV DA	1310- $\frac{3}{4}$ 250 (300- $\frac{3}{4}$)			
LNAV/VNAV DA	1457-1 $\frac{1}{8}$ 397 (400-1 $\frac{1}{8}$)			
LNAV MDA	1580-1	520 (600-1)	1580-1 $\frac{3}{8}$	520 (600-1 $\frac{3}{8}$)
📻 CIRCLING	1600-1	540 (600-1)	1840-2 $\frac{1}{4}$ 780 (800-2 $\frac{1}{4}$)	1840-2 $\frac{1}{2}$ 780 (800-2 $\frac{1}{2}$)

ROSEAU, MINNESOTA
Amdt 1 03NOV22

48°51'N-95°42'W

RNAV (GPS) RWY 34

NC-1, 31 OCT 2024 to 28 NOV 2024

NC-1, 31 OCT 2024 to 28 NOV 2024