

WAAS CH 58027 W19A	APP CRS 187°	Rwy Idg TDZE Apt Elev	4154 2687 2694
--	------------------------	-----------------------------	---

RNAV (GPS) RWY 19

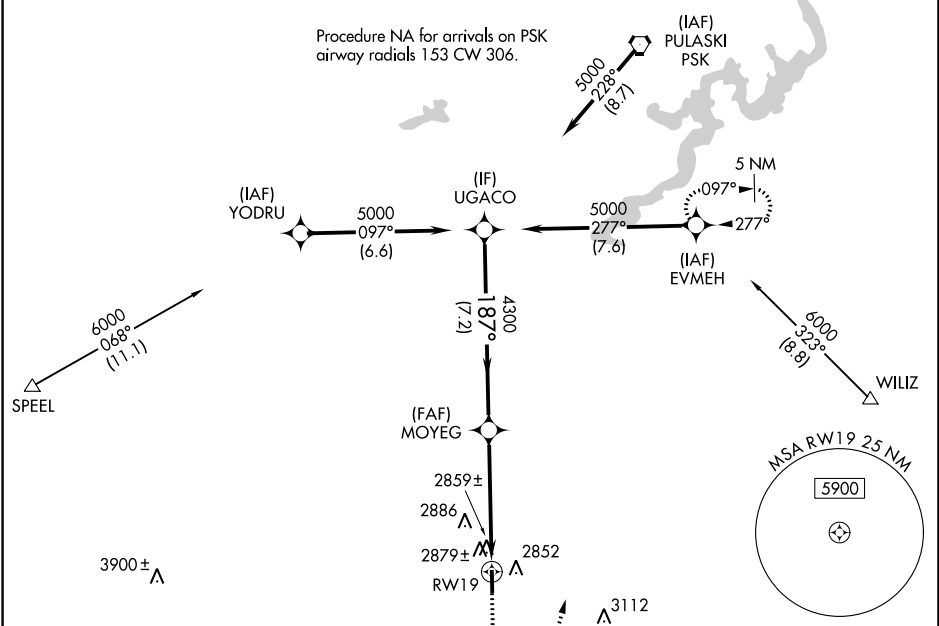
TWIN COUNTY (HLX)

RNP APCH - GPS.

▼ Rwy 19 helicopter visibility reduction below 3/4 SM NA. VDP NA with Dublin altimeter setting.
 ▲ When local altimeter setting not received, use Dublin altimeter setting: increase all MDAs 140 feet and visibility LP Cats C and D 3/8 SM and Circling Cat C 1/4 SM and Cat D 1/2 SM.

MISSED APPROACH: Climb to 3200 then climbing left turn to 5000 direct EVMEH and hold.

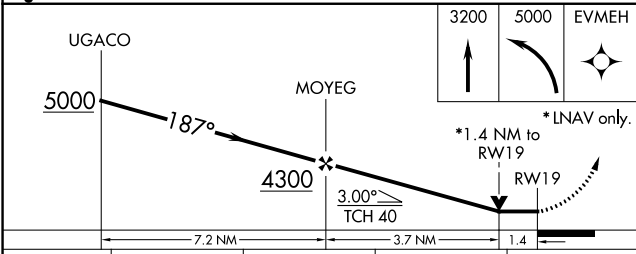
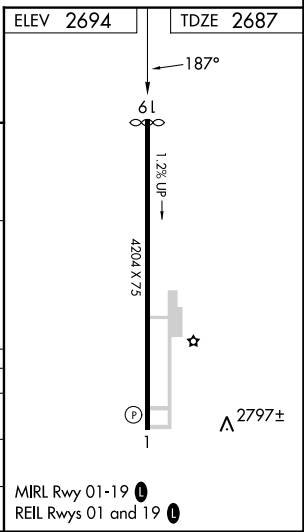
AWOS-3 118.375	ROANOKE APP CON 126.0 339.8	UNICOM 122.8 (CTAF) 0
--------------------------	---------------------------------------	---------------------------------



NE-3, 31 OCT 2024 to 28 NOV 2024

NE-3, 31 OCT 2024 to 28 NOV 2024

ELEV 2694	TDZE 2687
-----------	-----------



CATEGORY	A	B	C	D
LP MDA	3120-1	433 (500-1)	3120-1 3/8	433 (500-1 3/8)
LNAV MDA	3140-1	453 (500-1)	3140-1 3/8	453 (500-1 3/8)
CIRCLING	3200-1	506 (600-1)	3200-1 1/2 506 (600-1 1/2)	3440-2 1/2 746 (800-2 1/2)

MIRL Rwy 01-19 0
REIL Rwy 01 and 19 0