

VOR/DME UBG 117.4 Chan 121	APP CRS 014°	Rwy Idg TDZE Apt Elev N/A N/A 163
--	------------------------	---

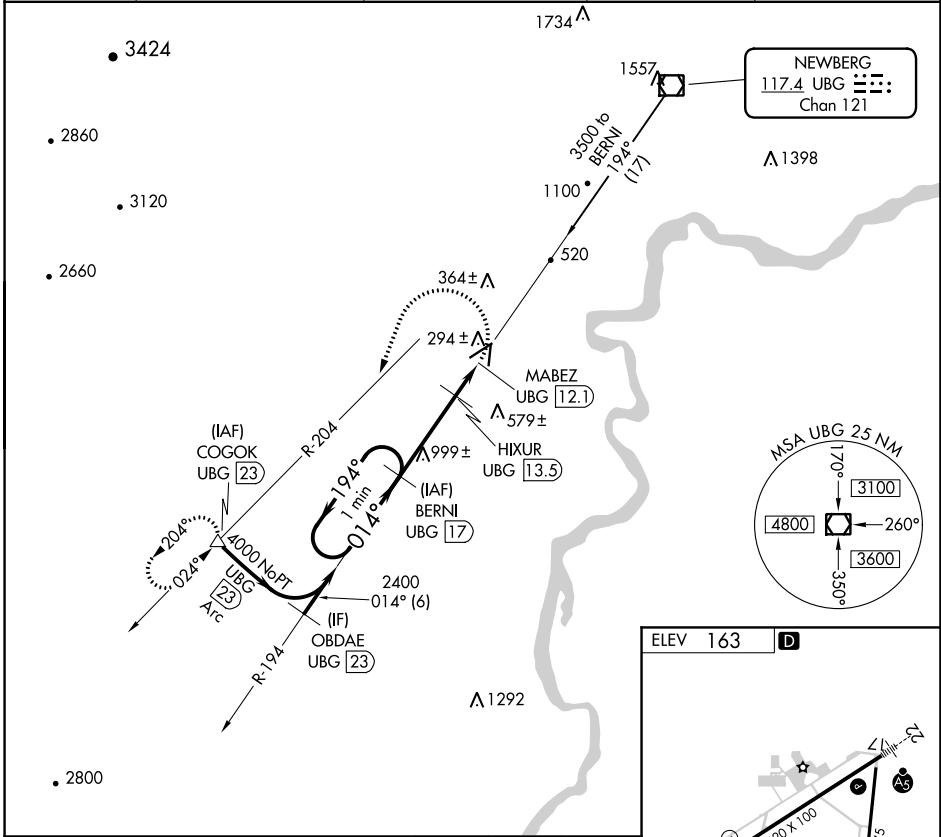
VOR/DME-B

MC MINNVILLE MUNI (MMV)

⚠ When local altimeter setting not received, use Aurora State altimeter setting; increase all MDA 60 feet and Circling Cat C visibility ½ SM.

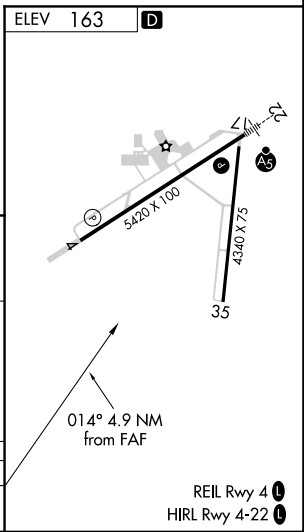
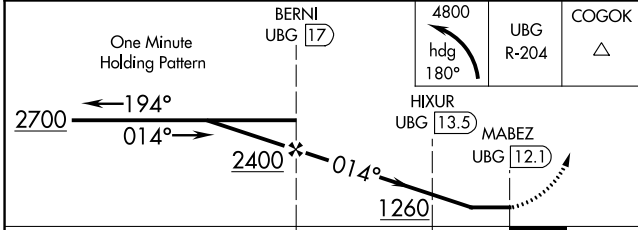
MISSED APPROACH: Climbing left turn to 4800 via heading 180° and UBG VOR/DME R-204 to COGOK/UBG 23 DME and hold, continue climb-in-hold to 4800.

ASOS 135.675	PORTLAND APP CON 126.0 284.6 (NORTH)	SEATTLE CENTER 125.8 291.7 (SOUTH)	CLNC DEL 118.35	UNICOM 123.0 (CTAF) 📻
------------------------	--	--	---------------------------	--



NW-1, 05 SEP 2024 to 03 OCT 2024

NW-1, 05 SEP 2024 to 03 OCT 2024



CATEGORY	A	B	C	D
CIRCLING	840-1	677 (700-1)	920-2¼ 757 (800-2¼)	1320-3 1157 (1200-3)

REIL Rwy 4 **📻**
HIRL Rwy 4-22 **📻**