

WAAS CH <b>90228</b> <b>W09A</b>	APP CRS <b>095°</b>	Rwy Idg TDZE Apt Elev	<b>5004</b> <b>753</b> <b>754</b>
--	------------------------	-----------------------------	---

# RNAV (GPS) RWY 9

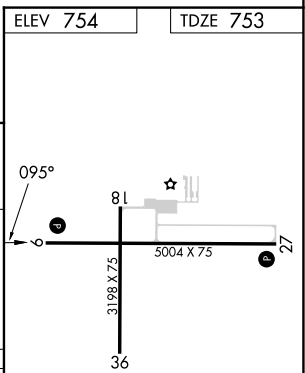
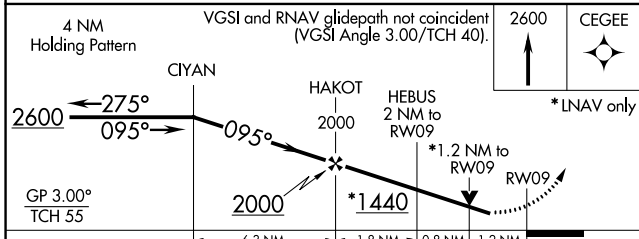
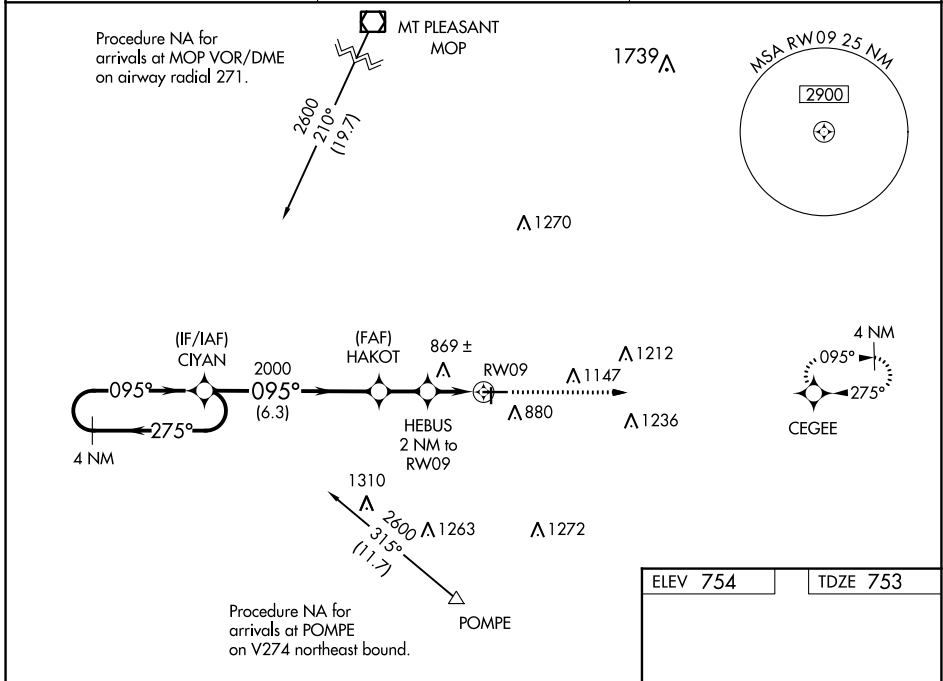
GRATIOT COMMUNITY (AMN)

RNP APCH.

**⚠** Baro-VNAV NA when using Mount Pleasant altimeter setting. For uncompensated Baro-VNAV systems, LNAV/VNAV NA below -16°C or above 39°C. Rwy 9 helicopter visibility reduction below 3/4 SM NA. When local altimeter setting not received, use Mount Pleasant altimeter setting and increase all DA 42 feet and VNAV all Cts visibility 1/8 mile, increase all MDA 60 feet, and LNAV Cat C and D visibility 1/4 mile. VDP NA when using Mount Pleasant altimeter setting.

MISSED APPROACH: Climb to 2600 direct CEGEE and hold.

AWOS-3P <b>124.175</b>	GREAT LAKES APP CON* <b>126.45 235.625</b>	UNICOM <b>122.8 (CTAF) 0</b>
---------------------------	---	---------------------------------



CATEGORY	A	B	C	D
LPV DA	1028-1		275 (300-1)	
LNAV/VNAV DA	1156-1 3/8		403 (500-1 3/8)	
LNAV MDA	1160-1 407 (500-1)		1160-1 1/8 407 (500-1 1/8)	

REIL Rwy 9 and 27 0  
MIRL Rwy 9-27 and 18-36 0

EC-1, 31 OCT 2024 to 28 NOV 2024

EC-1, 31 OCT 2024 to 28 NOV 2024