

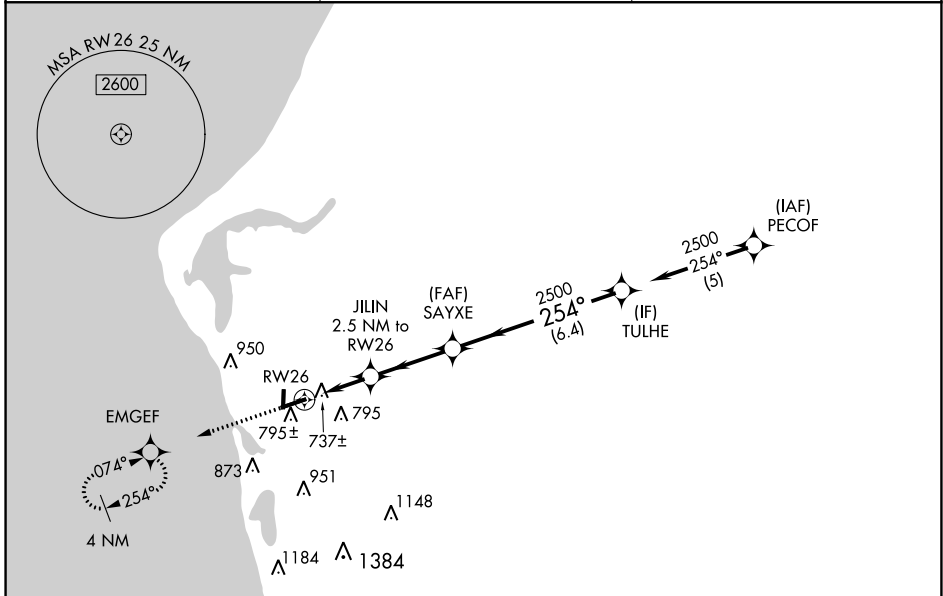
WAAS CH 49206 W26A	APP CRS 254°	Rwy Idg TDZE 647 Apt Elev 647	5003
--	------------------------	---	-------------

RNAV (GPS) RWY 26

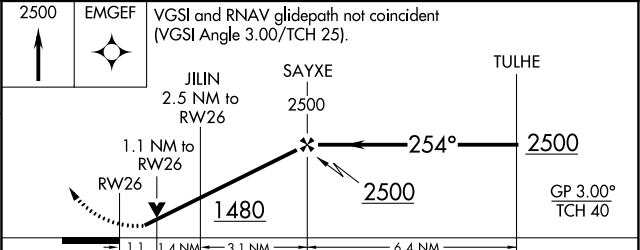
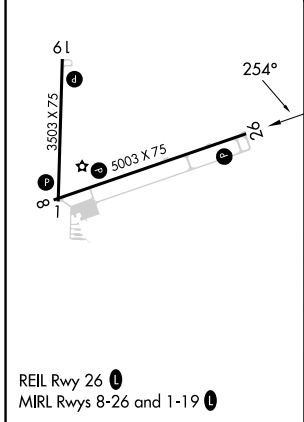
MASON COUNTY (LDM)

RNP APCH-GPS.		MISSED APPROACH: Climb to 2500 direct EMGEF and hold.
<p>⚠ Circling Rwy 1, 19 NA at night. Rwy 26 helicopter visibility reduction below ¾ SM NA. For uncompensated Baro-VNAV systems, LNAV/VNAV NA below -16°C or above 54°C.</p>		

AWOS-3 119,925	MINNEAPOLIS CENTER 120.85 322.35	UNICOM 123.0 (CTAF) 0
--------------------------	--	---------------------------------



ELEV 647	TDZE 647
-----------------	-----------------



CATEGORY	A	B	C	D
LPV DA	975-1	328 (400-1)		
LNAV/VNAV DA	1020-1	373 (400-1)		
LNAV MDA	1020-1	373 (400-1)		
CIRCLING	1160-1 513 (600-1)	1200-1 553 (600-1)	1260-1¾ 613 (700-1¾)	1460-2¾ 813 (900-2¾)

EC-1, 31 OCT 2024 to 28 NOV 2024

EC-1, 31 OCT 2024 to 28 NOV 2024