

NDB CNH 233	APP CRS 048°	Rwy Idg TDZE Apt Elev	N/A N/A 544
-----------------------	------------------------	-----------------------------	--

NDB-A

CLAREMONT MUNI (CNH)

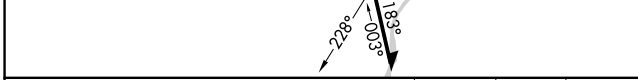
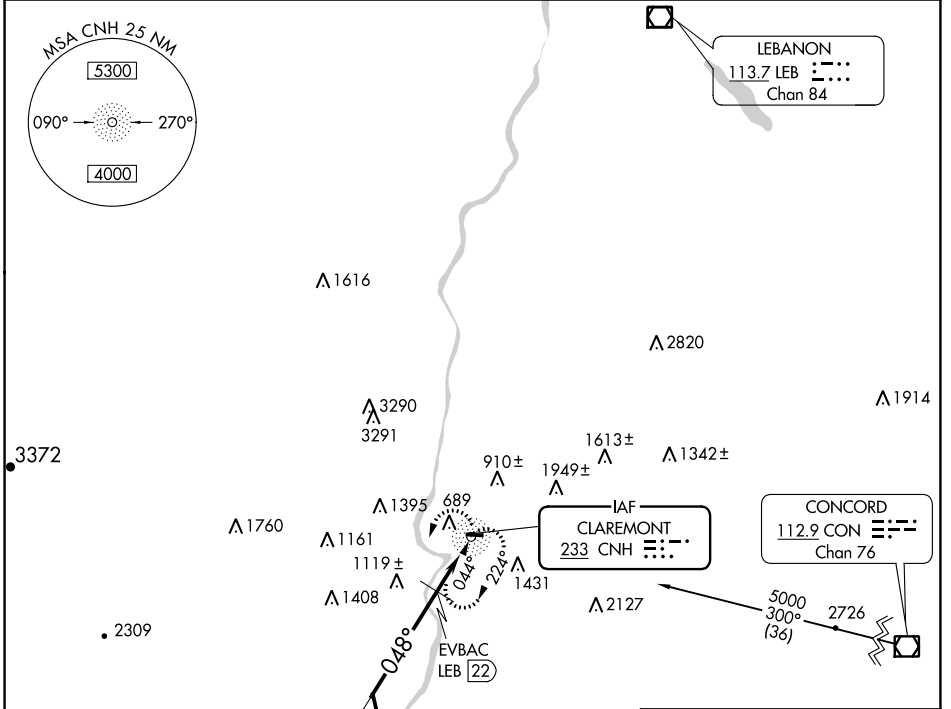
NA
-25°C

Procedure NA at night. Obtain local altimeter setting on CTAF; when not received, use Springfield altimeter setting and increase all MDA 20 feet.

MISSED APPROACH: Climbing left turn to 3500 via CNH NDB 228° bearing inbound then right turn direct CNH NDB and hold.

BOSTON CENTER
134.7 269.475

UNICOM
122.7 (CTAF)



Remain within 10 NM

↑ CNH NDB

3500

CNH 228°

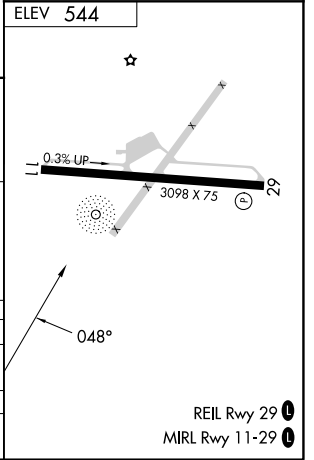
CNH

↑ Maintain 3500 or above until established outbound for procedure turn.

* 2060 when using Springfield altimeter setting.

* 2040

2.3 NM



CATEGORY	A	B	C	D
CIRCLING	2040-1¼ 1496 (1500-1¼)	2040-1½ 1496 (1500-1½)		NA
EVBAC DME MINIMUMS				
CIRCLING	1520-1¼ 976 (1000-1¼)	1740-1½ 1196 (1200-1½)		NA

NE-1, 31 OCT 2024 to 28 NOV 2024

NE-1, 31 OCT 2024 to 28 NOV 2024