

|                           |                        |   |
|---------------------------|------------------------|---|
| LOC I-BJC<br><b>111.7</b> | APP CRS<br><b>295°</b> | Rwy Idg<br>30R <b>9000</b><br>30L <b>7002</b><br>TDZE <b>5599 5628</b><br>Apt Elev <b>5673 5673</b> |
|---------------------------|------------------------|---|

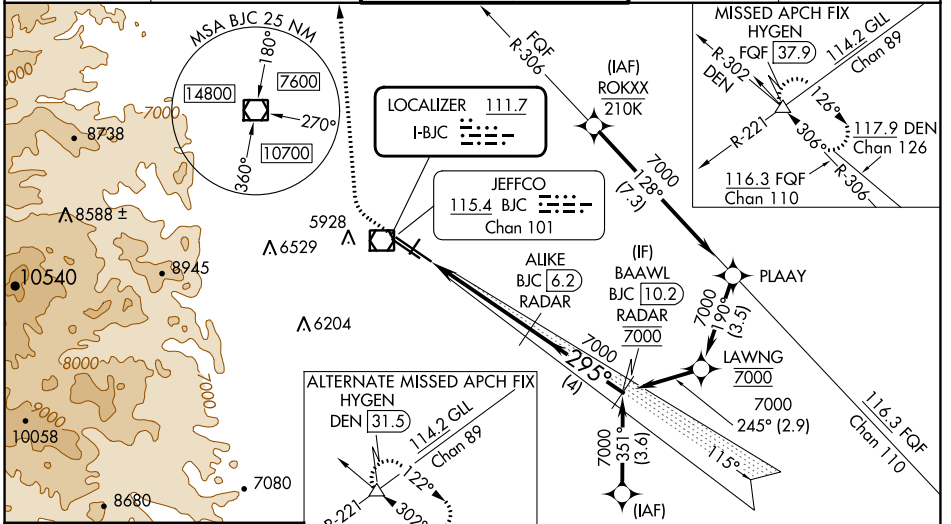
# ILS or LOC RWY 30R

## ROCKY MOUNTAIN METRO (BJC)

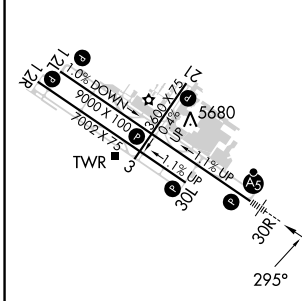
**DME** from BJC VOR/DME. Simultaneous reception of I-BJC and BJC DME required. DME or **NA RADAR** required. When local altimeter setting not received, use Denver Intl altimeter setting and increase all DA 82 feet and all MDA 100 feet. Increase S-ILS 30R all Cats visibility 3/8 mile. Increase S-LOC 30R Cats B/C/D visibility 1/4 mile. Increase Sidestep R30L Cats A/B visibility 1/4 mile, Cats C/D visibility 1/2 mile and Circling Cat C visibility 1/4 mile. For inoperative MALSRL, increase S-ILS 30R all Cats visibility 1/2 mile and increase S-LOC 30R Cat C/D visibility 3/8 mile. For inoperative MALSRL, when using Denver Intl altimeter setting, increase S-ILS 30R all Cats visibility to 2 1/4 miles. Increase S-LOC 30R Cat B visibility to 1 1/4 mile and Cats C/D visibility to 2 1/2 miles. For inoperative MALSRL, when using Denver Intl altimeter setting, increase S-ILS 30R\* all Cats visibility to 1 mile.  
\* Missed approach requires a minimum climb of 240 feet per NM to 9700.

**MALSRL**  
Climb to 6380 then climbing right turn to 10200 on heading 360° and on FQF VORTAC R-306 to HYGEN INT/FQF 37.9 DME and hold, continue climb-in-hold to 10200.

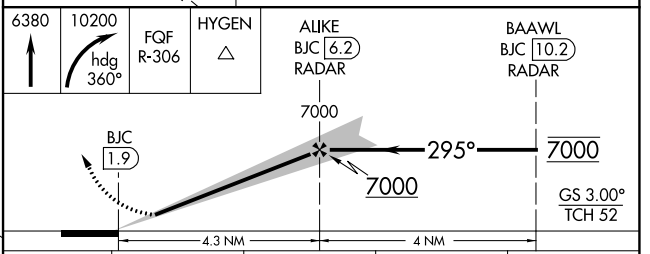
|                       |  |   |                         |                          |
|-----------------------|--|---|-------------------------|--------------------------|
| ATIS<br><b>126.25</b> | DENVER APP CON<br><b>125.12 263.02</b> | METRO TOWER*<br><b>118.6 (CTAF) 233.7</b> | GND CON<br><b>121.7</b> | CLNC DEL<br><b>132.6</b> |
|-----------------------|--|---|-------------------------|--------------------------|



|           |               |               |
|-----------|---------------|---------------|
| ELEV 5673 | TDZE 30R 5599 | TDZE 30L 5628 |
|-----------|---------------|---------------|



**RADAR OR GPS REQUIRED**



HIRL Rws 12L-30R  
MIRL Rws 3-21 and 12R-30L  
REIL Rws 12L, 12R and 30L  
FAF to MAP 4.3 NM

|         |      |      |      |      |      |
|---------|------|------|------|------|------|
| Knots   | 60   | 90   | 120  | 150  | 180  |
| Min:Sec | 4:18 | 2:52 | 2:09 | 1:43 | 1:26 |

| CATEGORY     | A        | B             | C                     | D                             |
|--------------|----------|---------------|-----------------------|-------------------------------|
| S-ILS 30R    |          | *5799-1/2     | 200 (200-1/2)         |                               |
| S-ILS 30R    |          | 6124-1 3/8    | 525 (500-1 3/8)       |                               |
| S-LOC 30R    | 6300-1/2 | 701 (700-1/2) | 6300-1 5/8            | 701 (700-1 5/8)               |
| SIDESTEP 30L | 6340-1   | 712 (700-1)   | 6340-2<br>712 (700-2) | 6340-2 1/4<br>712 (700-2 1/4) |
| CIRCLING     | 6340-1   | 667 (700-1)   | 6360-2<br>687 (700-2) | 6860-3<br>1187 (1200-3)       |

SW-1, 11 JUL 2024 to 08 AUG 2024

SW-1, 11 JUL 2024 to 08 AUG 2024