


LOC I-LWB <b>110.35</b>	APP CRS <b>045°</b>	Rwy Idg <b>7003</b>
		TDZE <b>2288</b>
		Apt Elev <b>2302</b>

# ILS or LOC RWY 4 GREENBRIER VALLEY (LWB)

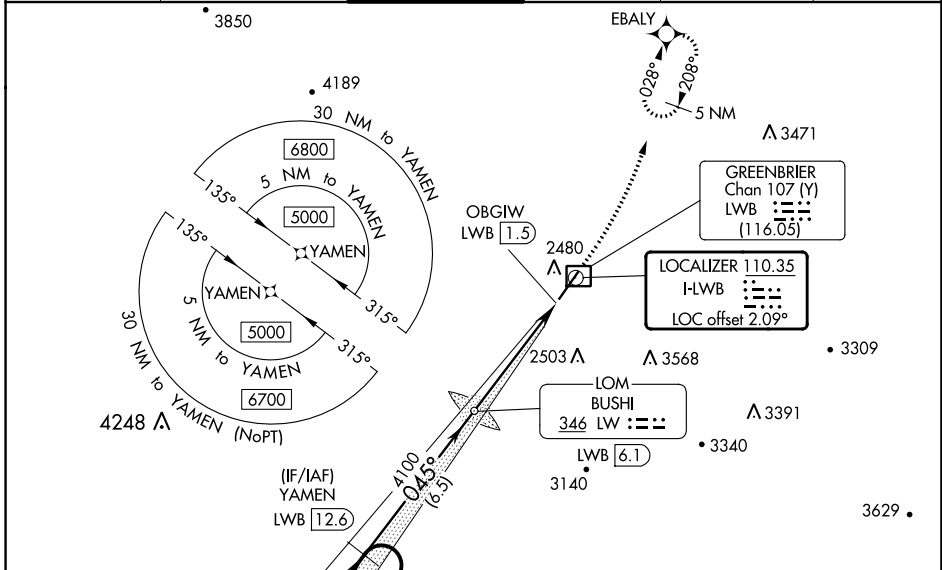
RNAV 1-GPS required.  
ADF or DME required for LOC only.

**▼** Autopilot coupled approach NA below 2700. Rwy 4 helicopter visibility reduction below 3/4 SM NA. For inop ALS increase S-ILS 4 all Cats visibility to 7/8 SM, increase S-LOC 4 Cats A/B to 1 1/8 SM.

MALSR 

MISSED APPROACH: Climb to 4000 then climbing left turn to 6000 direct EBALY and hold, continue climb-in-hold to 6000.

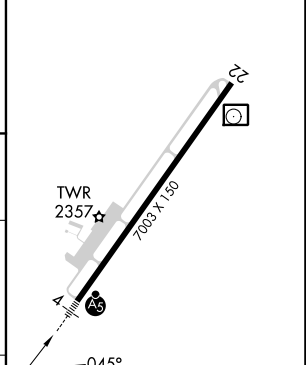
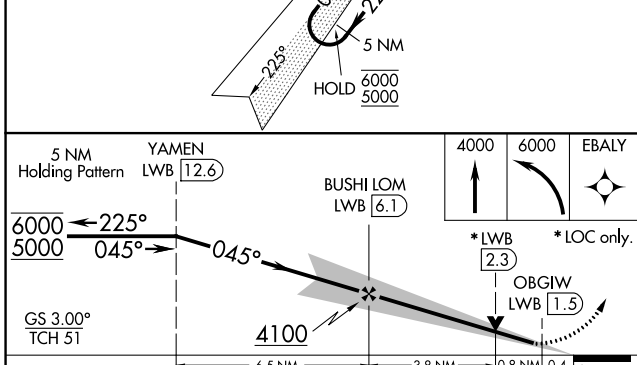
ATIS ★ <b>121.4</b>	WASHINGTON CENTER <b>134.4 353.9</b>	LEWISBURG TOWER★ <b>118.9 (CTAF) 0</b>	GND CON <b>121.9</b>	CLNC DEL <b>125.725</b> (When twr closed)	UNICOM <b>122.95</b>
------------------------	---	---	-------------------------	---	-------------------------



NE-4, 31 OCT 2024 to 28 NOV 2024

NE-4, 31 OCT 2024 to 28 NOV 2024

ELEV 2302	<b>D</b> TDZE 2288
-----------	--------------------



CATEGORY	A	B	C	D
S-ILS 4		2559-3/4	271 (300-3/4)	
S-LOC 4		2720-3/4	432 (500-3/4)	
<b>CIRCLING</b>	2840-1 538 (600-1)	3040-1 738 (800-1)	3280-3 978 (1000-3)	3680-3 1378 (1400-3)

REIL Rwy 22 <b>0</b>					
HIRL Rwy 4-22 <b>0</b>					
FAF to MAP 4.6 NM					
Knots	60	90	120	150	180
Min:Sec	4:36	3:04	2:18	1:50	1:32