

MELFA, VIRGINIA

AL-5598 (FAA)

22251

WAAS CH 42905 W03A	APP CRS 034°	Rwy Idg 5000 TDZE 47 Apt Elev 48
--	------------------------	---

RNAV (GPS) RWY 3

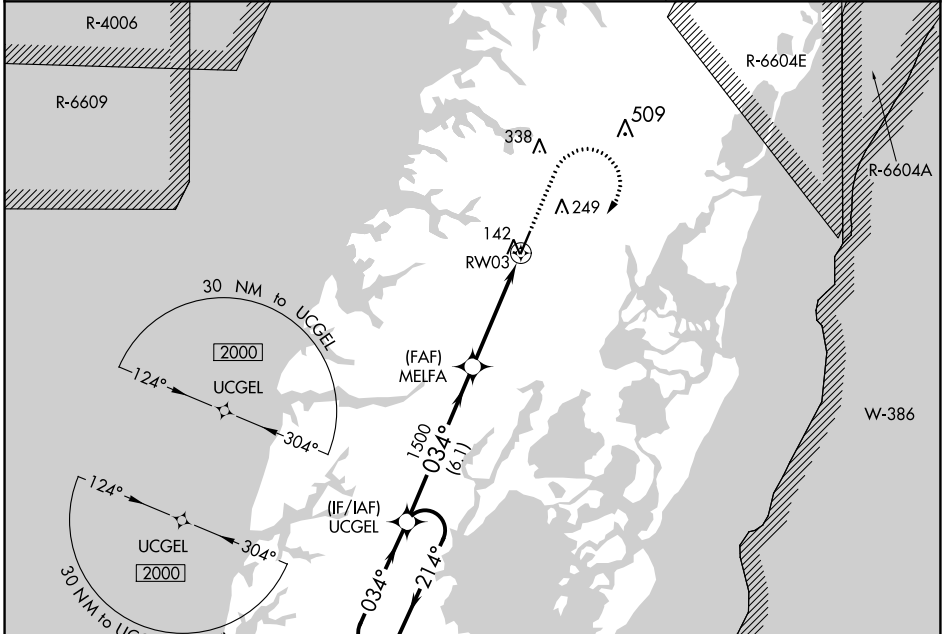
ACCOMACK COUNTY (MFV)

RNP APCH-GPS.

▼ For uncompensated Baro-VNAV systems, LNAV/VNAV NA below -15°C or above 54°C. Rwy 3 helicopter visibility reduction below 3/4 SM NA.

MISSED APPROACH: Climb to 500 then climbing right turn to 2000 direct UCGEL and hold.

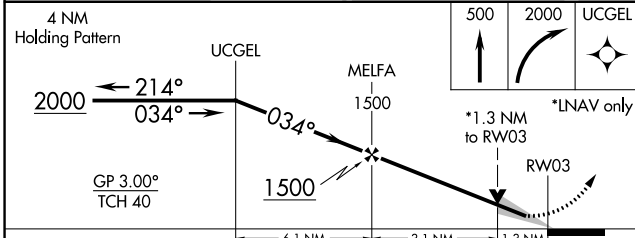
AWOS-3 118.175	PATUXENT APP CON* 127.95 314.0	UNICOM 122.8 (CTAF) 0
--------------------------	--	---------------------------------



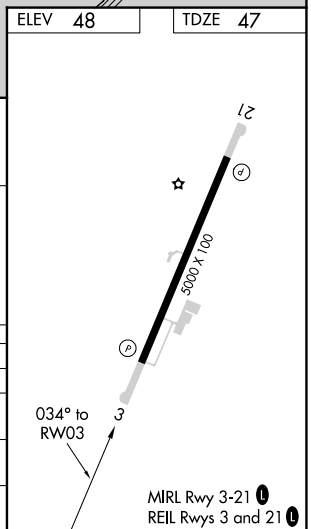
NE-3, 26 JAN 2023 to 23 FEB 2023

NE-3, 26 JAN 2023 to 23 FEB 2023

ELEV 48	TDZE 47
----------------	----------------



CATEGORY	A	B	C	D
LPV DA		297-1	250 (300-1)	
LNAV/VNAV DA		349-1	302 (400-1)	
LNAV MDA	500-1	453 (500-1)	500-1 3/8	453 (500-1 3/8)
C CIRCLING	500-1 452 (500-1)	560-1 512 (600-1)	700-1 3/4 652 (700-1 3/4)	700-2 652 (700-2)



MELFA, VIRGINIA
Amdt 2B 11AUG22

37°39'N-75°46'W

ACCOMACK COUNTY (MFV)

RNAV (GPS) RWY 3