

(FOXHL1.FOXHL) 24193

AL-5596 (FAA)

EASTON/NEWNAM FLD (ESN)

FOXHL ONE DEPARTURE (RNAV)

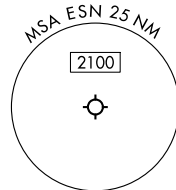
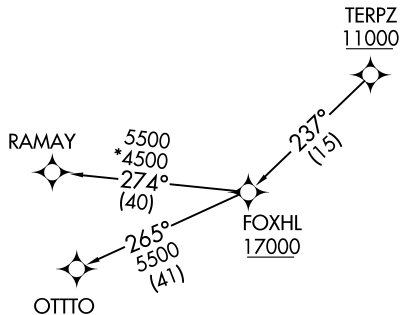
EASTON, MARYLAND

POTOMAC DEP CON
133.75 254.35
ATIS
124.475
CLNC DEL
119.075
GND CON
119.075
EASTON TOWER ★
118.525

RNAV 1 - DME/DME/IRU or GPS.

RADAR required.

**TOP ALTITUDE:
17000**



NOTE: Jet aircraft only.

TAKEOFF MINIMUMS:

Rwys 4, 15, 33: Standard.
Rwy 22: 300-2 or Standard with minimum climb
of 210'/NM to 400.



NOTE: Chart not to scale.



DEPARTURE ROUTE DESCRIPTION

Climb on assigned heading for RADAR vectors to cross TERPZ at or above 11000, thence....

....then on track 237° to cross FOXHL at or above 17000, then on assigned transition. Maintain 17000, expect filed altitude 10 minutes after departure.

OTTTO TRANSITION (FOXHL1.OTTTO)

RAMAY TRANSITION (FOXHL1.RAMAY)

FOXHL ONE DEPARTURE (RNAV)
(FOXHL1.FOXHL) 11JUL24

EASTON, MARYLAND
EASTON/NEWNAM FLD (ESN)

NE-3, 03 OCT 2024 to 31 OCT 2024

NE-3, 03 OCT 2024 to 31 OCT 2024