

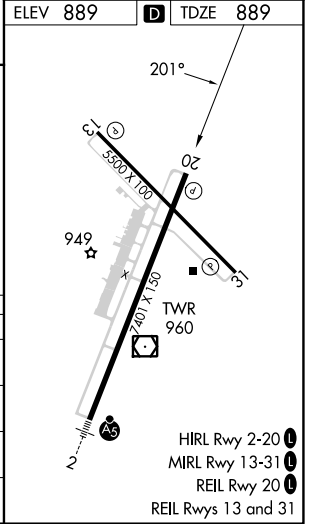
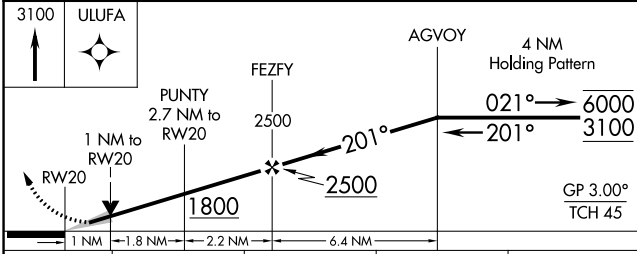
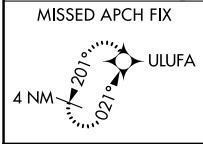
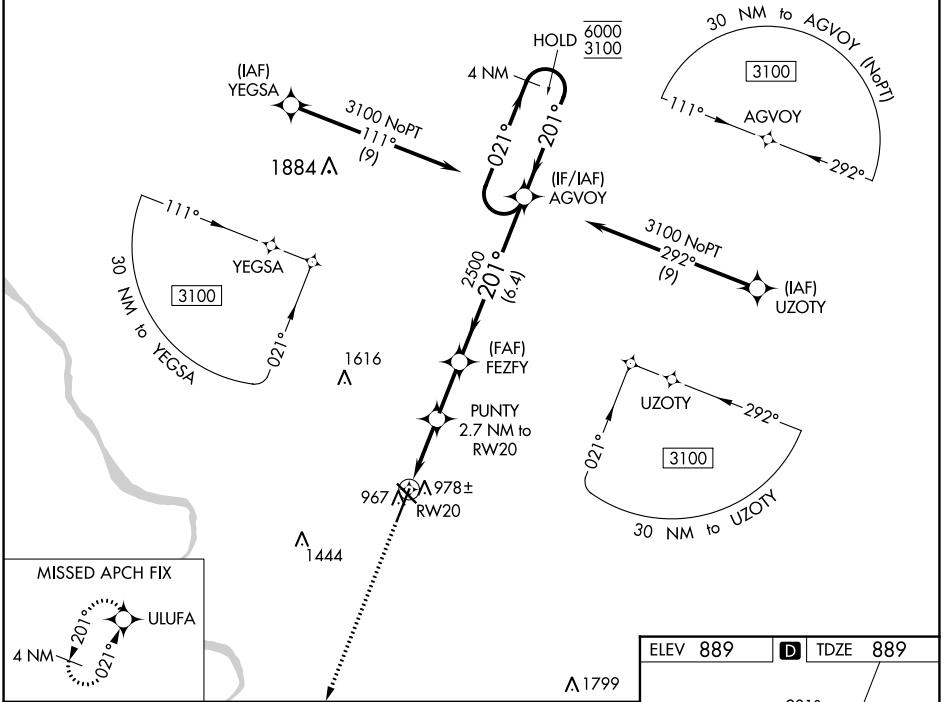
WAAS CH <b>93599</b> <b>W20A</b>	APP CRS <b>201°</b>	Rwy Idg TDZE Apt Elev	<b>7401</b> <b>889</b> <b>889</b>
--	------------------------	-----------------------------	---

# RNAV (GPS) RWY 20

COLUMBIA RGNL (COU)

RNP APCH - GPS.		COLUMBIA TOWER ★		GND CON	UNICOM
Circling NA for Cat D west of Rwy 2 and 13. For uncompensated Baro-VNAV systems, LNAV/VNAV NA below -16°C or above 54°C.		<b>119.3 (CTAF) 363.25</b>		<b>121.6</b>	<b>122.95</b>
ATIS	MIZZU APP CON				
<b>128.45</b>	<b>124.375 353.925</b>				

MISSED APPROACH: Climb to 3100 direct ULUFA and hold.



CATEGORY	A	B	C	D
LPV DA		1139-¾	250 (300-¾)	
LNAV/VNAV DA		1139-¾	250 (300-¾)	
LNAV MDA		1240-1	351 (400-1)	
CIRCLING	1280-1 391 (400-1)	1340-1 451 (500-1)	1360-1½ 471 (500-1½)	1440-2 551 (600-2)

NC-3, 03 OCT 2024 to 31 OCT 2024

NC-3, 03 OCT 2024 to 31 OCT 2024