


WAAS CH 48816 W26A	APP CRS 257°	Rwy Idg TDZE Apt Elev	5205 2586 2591
--	------------------------	-----------------------------	---

RNAV (GPS) RWY 26

HAVRE CITY-COUNTY (HVR)

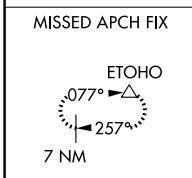
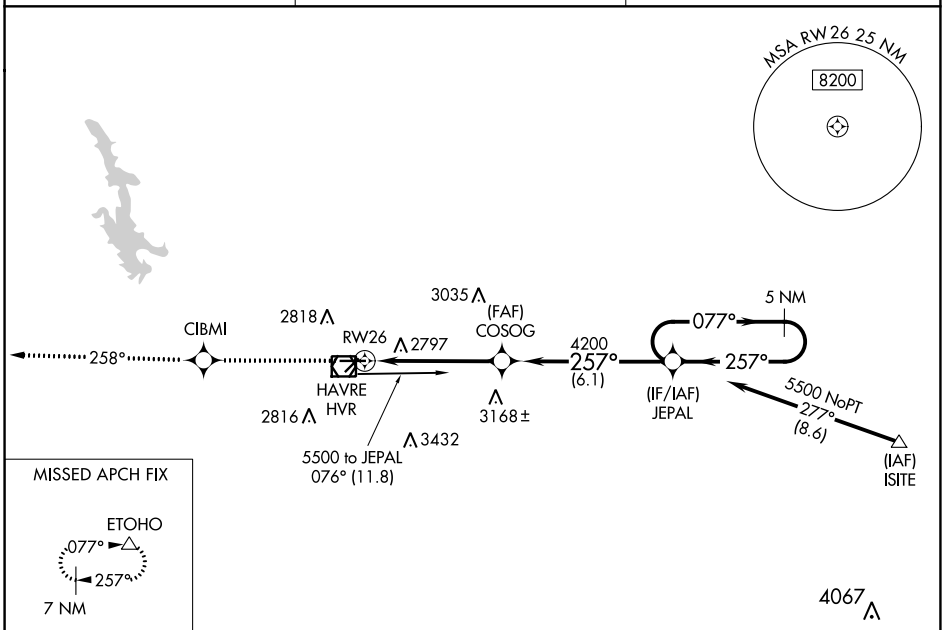
RNP APCH-GPS.
 For uncompensated Baro-VNAV systems, LNAV/VNAV NA below -20°C or above 54°C.

MISSED APPROACH: Climb to 8000 direct CIBMI and on track 258° to ETOHO and hold, continue climb-in-hold to 8000.

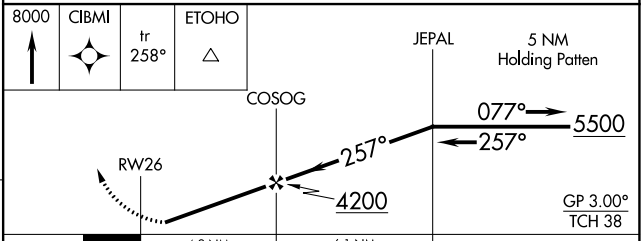
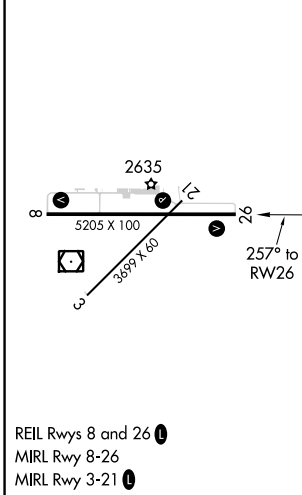
ASOS
135.225

SALT LAKE CENTER
133.4 285.4

UNICOM
122.8 (CTAF) 0



ELEV 2591	D	TDZE 2586
-----------	----------	-----------



CATEGORY	A	B	C	D
LPV DA	2836- ³ / ₄		250 (300- ³ / ₄)	
LNAV/VNAV DA	3097-1 ³ / ₄		511 (600-1 ³ / ₄)	
LNAV MDA	3060-1	474 (500-1)	3060-1 ¹ / ₄ 474 (500-1 ¹ / ₄)	3060-1 ¹ / ₂ 474 (500-1 ¹ / ₂)
CIRCLING	3080-1 489 (500-1)	3120-1 529 (600-1)	3360-2 ¹ / ₄ 769 (800-2 ¹ / ₄)	3740-3 1149 (1200-3)

NW-1, 31 OCT 2024 to 28 NOV 2024

NW-1, 31 OCT 2024 to 28 NOV 2024