

WAAS CH <b>78227</b> <b>W01A</b>	APP CRS <b>007°</b>	Rwy Idg TDZE Apt Elev	<b>6502</b> <b>124</b> <b>130</b>
--	------------------------	-----------------------------	---

# RNAV (GPS) RWY 1

HARRELL FLD (CDH)

RNP APCH - GPS.

**⚠** Baro-VNAV NA when using El Dorado altimeter setting. For uncompensated Baro-VNAV systems, LNAV/VNAV NA below -15°C or above 43°C. Rwy 1 helicopter visibility reduction below ¼ SM NA. When local altimeter setting not received, use El Dorado altimeter setting and increase LPV DA to 507 feet, LNAV/VNAV DA to 499 feet and all MDA 80 feet; increase LPV all Cats visibility ½ SM, LNAV Cats C and D ¾ SM, and Circling Cat D ¼ SM.

**MISSED APPROACH:**  
Climb to 2700 direct BUSGE and hold.

AWOS-3  
**125.2**

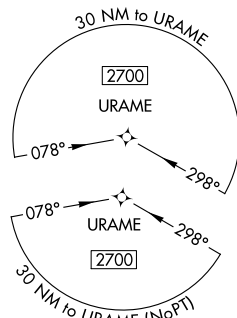
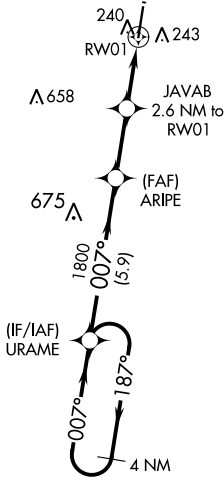
FORT WORTH CENTER  
**128.2 269.1**

UNICOM  
**122.7 (CTAF)**

MISSED APCH FIX



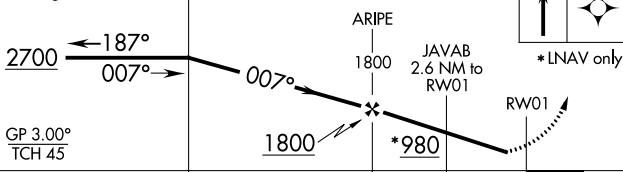
Λ 424



SC-1, 08 AUG 2024 to 05 SEP 2024

SC-1, 08 AUG 2024 to 05 SEP 2024

4 NM Holding Pattern



CATEGORY	A	B	C	D
LPV DA		430-1	306 (300-1)	
LNAV/VNAV DA		422-1	298 (300-1)	
LNAV MDA		500-1	376 (400-1)	
CIRCLING	560-1 430 (500-1)	580-1 450 (500-1)	580-1½ 450 (500-1½)	960-2¾ 830 (900-2¾)

ELEV 130	TDZE 124
----------	----------

MIRL Rwy 1-19  
REIL Rws 1 and 19