

WAAS CH 40199 W32A	APP CRS 317°	Rwy Idg TDZE Apt Elev	7701 24 30
--	------------------------	-----------------------------	---------------------------------------

RNAV (GPS) Z RWY 32

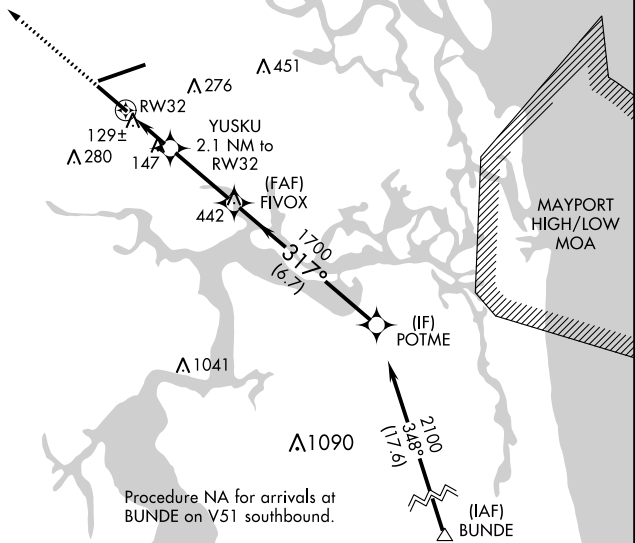
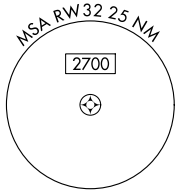
JACKSONVILLE INTL (JAX)

RNP APCH-GPS

▼ For uncompensated Baro-VNAV systems, LNAV/VNAV NA below -5°C or above 54°C. Rwy 32 helicopter visibility reduction below ¾ SM NA.

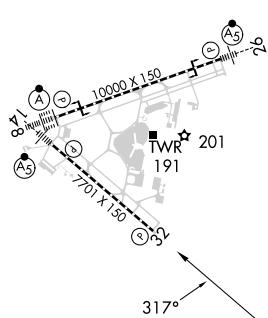
MISSED APPROACH: Climb to 2000 direct OSBAJ and hold.

D-ATIS 125.85	JACKSONVILLE APP CON 119.0 269.9	JACKSONVILLE TOWER 118.3 317.7	GND CON 121.9 348.6	CLNC DEL 119.5 290.275	CPDLC
-------------------------	--	--	-------------------------------	----------------------------------	-------



Procedure NA for arrivals at BUNDE on V51 southbound.

ELEV 30	TDZE 24
---------	---------



REIL Rwy 32
TDZ/CL Rwys 8, 14, and 26
HIRL Rwys 8-26 and 14-32

2000	OSBAJ	VGSi and RNAV glidepath not coincident (VGSi Angle 3.00/TCH 67).		POTME
		YUSKU 2.1 NM to RW32	FIVOX 1700	2100
		1 NM to RW32		317°
		RW32	740	1700
		1 NM	-1.1 NM	3 NM
				6.7 NM
CATEGORY	A	B	C	D
LPV DA		336-1	312 (400-1)	
LNAV/VNAV DA		387-1¼	363 (400-1¼)	
LNAV MDA		400-1	376 (400-1)	
CIRCLING	520-1	490 (500-1)	580-1½ 550 (600-1½)	580-2 550 (600-2)

SE-3, 05 SEP 2024 to 03 OCT 2024

SE-3, 05 SEP 2024 to 03 OCT 2024