

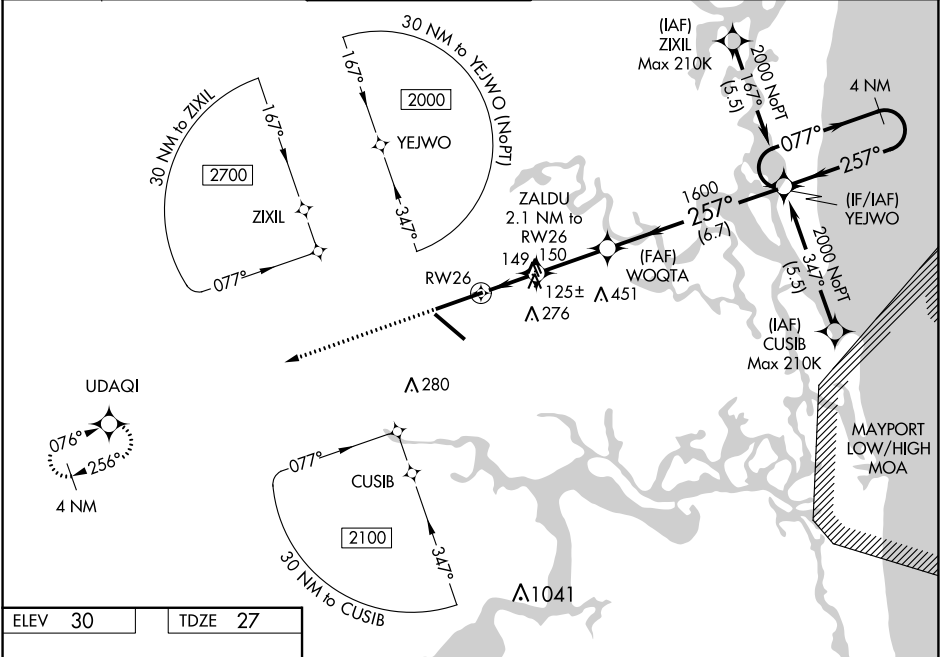
WAAS CH <b>97626</b> <b>W26A</b>	APP CRS <b>257°</b>	Rwy Idg <b>10000</b> TDZE <b>27</b> Apt Elev <b>30</b>
--	------------------------	--

# RNAV (GPS) Z RWY 26

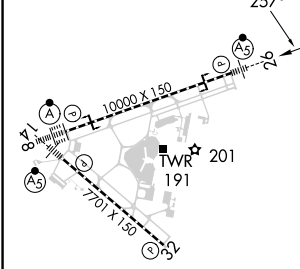
JACKSONVILLE INTL (JAX)

RNP APCH-GPS. ▼ For uncompensated Baro-VNAV systems, LNAV/VNAV NA below -5°C or above 54°C. For inoperative MALSR, increase LNAV/VNAV all Cats visibility to RVR 4500 and increase LNAV Cats C/D visibility to RVR 5500.	MALSR 	MISSED APPROACH: Climb to 2000 direct UDAQI and hold.
---	-----------	---

D-ATIS <b>125.85</b>	JACKSONVILLE APP CON <b>119.0 269.9</b>	JACKSONVILLE TOWER <b>118.3 317.7</b>	GND CON <b>121.9 348.6</b>	CLNC DEL <b>119.5 290.275</b>	CPDLC
-------------------------	--	--	-------------------------------	----------------------------------	-------



ELEV 30	TDZE 27
---------	---------



2000	UDAQI	VGSI and RNAV glidepath not coincident (VGSI Angle 3.00/TCH 70).	4 NM Holding Pattern
		ZALDU 2.1 NM to RW26	YEJWO
		WQGTA 1.600	
		1 NM to RW26	
		RW26	

CATEGORY	A	B	C	D
LPV DA		227/18	200 (200-½)	
LNAV/VNAV DA		300/24	273 (300-½)	
LNAV MDA	400/24	373 (400-½)	400/35	373 (400-¾)
CIRCLING	520-1	490 (500-1)	580-1½ 550 (600-1½)	640-2 610 (700-2)

REIL Rwy 32  
TDZ/CL Rwys 8, 14, and 26  
HIRL Rwys 8-26 and 14-32

SE-3, 05 SEP 2024 to 03 OCT 2024

SE-3, 05 SEP 2024 to 03 OCT 2024