

WAAS CH <b>70626</b> <b>W14A</b>	APP CRS <b>136°</b>	Rwy Idg TDZE Apt Elev	<b>7701</b> <b>27</b> <b>30</b>
--	------------------------	-----------------------------	---------------------------------------

# RNAV (GPS) Z RWY 14

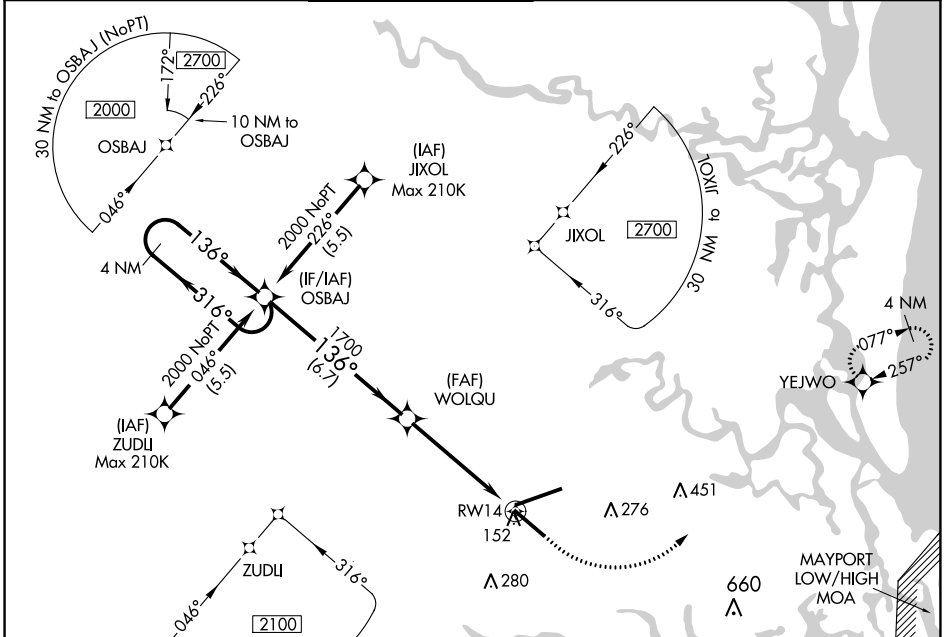
JACKSONVILLE INTL (JAX)

RNP APCH-GPS.

For uncompensated Baro-VNAV systems, LNAV/VNAV NA below -5°C or above 54°C. For inop ALS, increase LPV visibility all Cats to ¾ SM and increase LNAV/VNAV visibility all Cats and LNAV Cats A and B visibility to 1 SM. Rwy 14 helicopter visibility reduction below ¾ SM NA.

MALSR MISSED APPROACH:  
Climb to 500 then climbing left turn to 2000 direct YEJWO and hold.

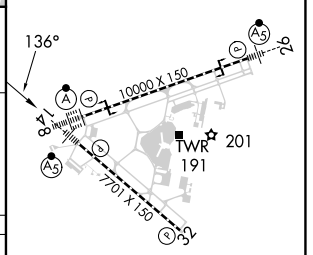
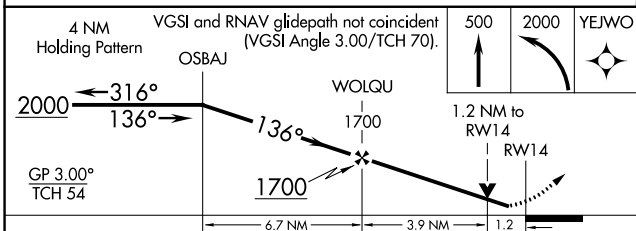
D-ATIS <b>125.85</b>	JACKSONVILLE APP CON <b>119.0 269.9</b>	JACKSONVILLE TOWER <b>118.3 317.7</b>	GND CON <b>121.9 348.6</b>	CLNC DEL <b>119.5 290.275</b>	CPDLC
-------------------------	--	--	-------------------------------	----------------------------------	-------



SE-3, 05 SEP 2024 to 03 OCT 2024

SE-3, 05 SEP 2024 to 03 OCT 2024

ELEV 30	TDZE 27
---------	---------



CATEGORY	A	B	C	D
LPV DA		306-¾	279 (300-¾)	
LNAV/VNAV DA		388-¾	361 (400-¾)	
LNAV MDA	480-¾	453 (500-¾)	480-⅞	453 (500-⅞)
CIRCLING	520-1	490 (500-1)	580-1½ 550 (600-1½)	580-2 550 (600-2)

REIL Rwy 32  
TDZ/CL Rwys 8, 14, and 26  
HIRL Rwys 8-26 and 14-32